



MLS 6751051 Residential

\$419,800

2,376 sq ft
4 bedrooms
2 baths

806 Lakewood Drive
Bemidji MN 56601

Status: Pending

Description:

Have It All—Just Minutes from Bemidji! This stunning 4-bedroom, 2-bathroom home offers the perfect blend of comfort, functionality, and space—all set on 14.38 picturesque acres on tarred roads and just minutes from town. Step inside to a spacious open-concept layout featuring soaring vaulted ceilings in the living room, dining area, and kitchen. The heart of the home is the expansive kitchen with a massive island—ideal for gatherings, cooking, or casual dining and the large entryway has a walk-in closet with plenty of space to hide all your outdoor shoes and jackets.

A single attached garage plus a 28x36 triple detached garage and a 25x40 pole building, provides ample space for vehicles, hobbies and tons of storage.

There's even income potential with billboard signage already in place. Want to dabble in hobby farming? The chicken coop and pig pen are negotiable, making it easy to start your own little homestead.

With privacy, space, and income potential—plus all the perks of rural living just minutes from Bemidji—this one-of-a-kind property truly lets you have it all.

Additional Details:

Year Built	1977
Lot Acres	14.38
Lot Dimensions	1261 x 497 x 1259 x 486
Garage Stalls	6
School District	31
Taxes	\$4,170
Taxes with Assessments	\$4,356
Tax Year	2025

Additional Features:

Basement: Block **Fuel:** Electric, Propane **Garage:** 6 **Heat:** Baseboard, Forced Air **Sewer:** Private Sewer **Water:** Private **Air Conditioning:** Central Air



Listed By:

218 Real Estate

ue to Left on Lakewood, First Driveway on Left.

Affinity Real Estate Inc. participates in the Regional Multiple Listing Service of Minnesota, Inc Broker Reciprocity (sm) program, allowing us to display other broker's listings on our website. All properties are subject to prior sale, change or withdrawal.



Call Affinity Real Estate

218-237-3333

info@affinityrealestate.com



Affinity Real Estate - 600 Park Avenue South - Park Rapids MN 56470



website: www.AffinityRealEstate.com | email: info@affinityrealestate.com | office: 218-237-3333 | fax: 218-237-3377



\$419,800
 MLS 6751051 Residential
 806 Lakewood Drive
 Bemidji MN 56601



website: www.AffinityRealEstate.com | email: info@affinityrealestate.com | office: 218-237-3333 | fax: 218-237-3377



\$419,800
 MLS 6751051 Residential
 806 Lakewood Drive
 Bemidji MN 56601



website: www.AffinityRealEstate.com | email: info@affinityrealestate.com | office: 218-237-3333 | fax: 218-237-3377

Affinity
REAL ESTATE INC

\$419,800
MLS 6751051 Residential
806 Lakewood Drive
Bemidji MN 56601



website: www.AffinityRealEstate.com | email: info@affinityrealestate.com | office: 218-237-3333 | fax: 218-237-3377

Affinity
REAL ESTATE INC

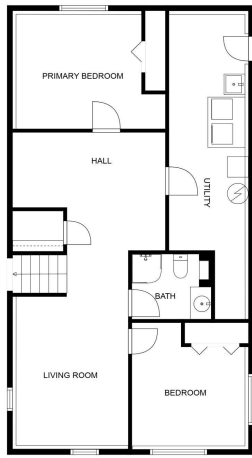
\$419,800
MLS 6751051 Residential
806 Lakewood Drive
Bemidji MN 56601



website: www.AffinityRealEstate.com | email: info@affinityrealestate.com | office: 218-237-3333 | fax: 218-237-3377



\$419,800
MLS 6751051 Residential
806 Lakewood Drive
Bemidji MN 56601



FLOOR PLAN CREATED BY CUBICASA APP. MEASUREMENTS DEEMED HIGHLY RELIABLE BUT NOT GUARANTEED.



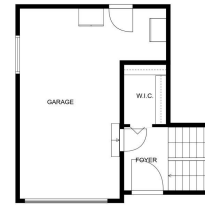
FLOOR PLAN CREATED BY CUBICASA APP. MEASUREMENTS DEEMED HIGHLY RELIABLE BUT NOT GUARANTEED.



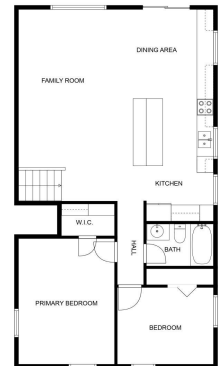
FLOOR PLAN CREATED BY CUBICASA APP. MEASUREMENTS DEEMED HIGHLY RELIABLE BUT NOT GUARANTEED.



FLOOR 1



FLOOR 2



FLOOR 3

FLOOR PLAN CREATED BY CUBICASA APP. MEASUREMENTS DEEMED HIGHLY RELIABLE BUT NOT GUARANTEED.

website: www.AffinityRealEstate.com | email: info@affinityrealestate.com | office: 218-237-3333 | fax: 218-237-3377



\$419,800
 MLS 6751051 Residential
 806 Lakewood Drive
 Bemidji MN 56601