



MLS 6751068 Commercial

\$719,000

TBD 28428 US Highway 10
Detroit Lakes MN 56501

Status: Active

Description:

2 Acre Option! Looking to start or grow your business in Detroit Lakes, MN? Prime location with 175 Feet of frontage on Highway 10, including 2 Acres and a 4,000+ Square Foot shop with 16' Sidewalls. Finished and heated with office space and a bathroom. Plenty of room to expand on the back 1/2 of the property if you need more acreage (MLS#6713682)
Real Estate sale only.

Additional Details:

Year Built	2002
Lot Acres	2
Lot Dimensions	Irregular
Garage Stalls	4
School District	1074
Taxes	\$2,832
Taxes with Assessments	\$2,832
Tax Year	2024

Additional Features:

Fuel: Array **Garage:** 4 **Heat:** Boiler, Forced Air, In-Floor Heating, Radiant **Sewer:** Holding Tank, Shared Septic, Tank with Drainage Field
Water: Private, Sand Point

Driving Directions:

Highway 10 East to Property on North Side of highway (South of Train Tracks)



Listed By:
The Real Estate Company of Detroit Lakes

Affinity Real Estate Inc. participates in the Regional Multiple Listing Service of Minnesota, Inc Broker Reciprocity (sm) program, allowing us to display other broker's listings on our website. All properties are subject to prior sale, change or withdrawal.



Call Affinity Real Estate

218-237-3333

info@affinityrealestate.com



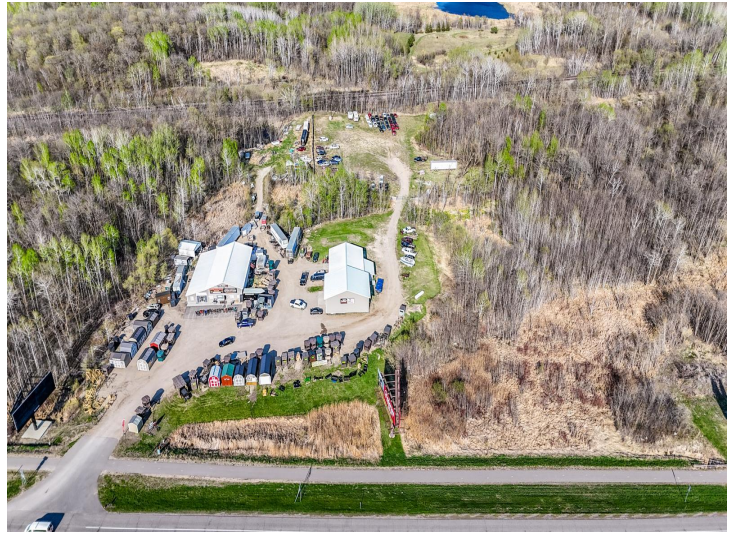
Affinity Real Estate - 600 Park Avenue South - Park Rapids MN 56470



website: www.AffinityRealEstate.com | email: info@affinityrealestate.com | office: 218-237-3333 | fax: 218-237-3377



\$719,000
 MLS 6751068 Commercial
 TBD 28428 US Highway 10
 Detroit Lakes MN 56501



website: www.AffinityRealEstate.com | email: info@affinityrealestate.com | office: 218-237-3333 | fax:218-237-3377



\$719,000
MLS 6751068 Commercial
TBD 28428 US Highway 10
Detroit Lakes MN 56501



website: www.AffinityRealEstate.com | email: info@affinityrealestate.com | office: 218-237-3333 | fax: 218-237-3377

Affinity
REAL ESTATE INC

\$719,000
MLS 6751068 Commercial
TBD 28428 US Highway 10
Detroit Lakes MN 56501



website: www.AffinityRealEstate.com | email: info@affinityrealestate.com | office: 218-237-3333 | fax:218-237-3377



\$719,000
MLS 6751068 Commercial
TBD 28428 US Highway 10
Detroit Lakes MN 56501