



MLS 6751190 Land

\$299,000

80 Acres
Raw Land

TBD Timberlane Road
Staples MN 56479

Status: Active

Description:

CALLING ALL HUNTERS! 80 acres of diverse terrain offering a mix of opportunity and seclusion. Approximately 20 acres of mature woods, 3 acres of pasture, and the remainder a blend of lowland and marsh - ideal for wildlife habitat. Adjacent to 206 acres of state land for extended recreational use. Excellent hunting opportunities with abundant wildlife, including deer, bear, and waterfowl. This property is a hunter's paradise.

Additional Details:

Lot Acres	80
Lot Dimensions	1329x2640x1327x2643
School District	2170
Taxes	\$746
Taxes with Assessments	\$746
Tax Year	2025

Additional Features:

Driving Directions:

From MN-210 W go South on US-10 W to Left onto 321st Ave to Right onto Timberlane Road.



Listed By:
Weichert REALTORS Tower Properties

Affinity Real Estate Inc. participates in the Regional Multiple Listing Service of Minnesota, Inc Broker Reciprocity (sm) program, allowing us to display other broker's listings on our website. All properties are subject to prior sale, change or withdrawal.



Call Affinity Real Estate

218-237-3333

info@affinityrealestate.com



Affinity Real Estate - 600 Park Avenue South - Park Rapids MN 56470



website: www.AffinityRealEstate.com | email: info@affinityrealestate.com | office: 218-237-3333 | fax: 218-237-3377



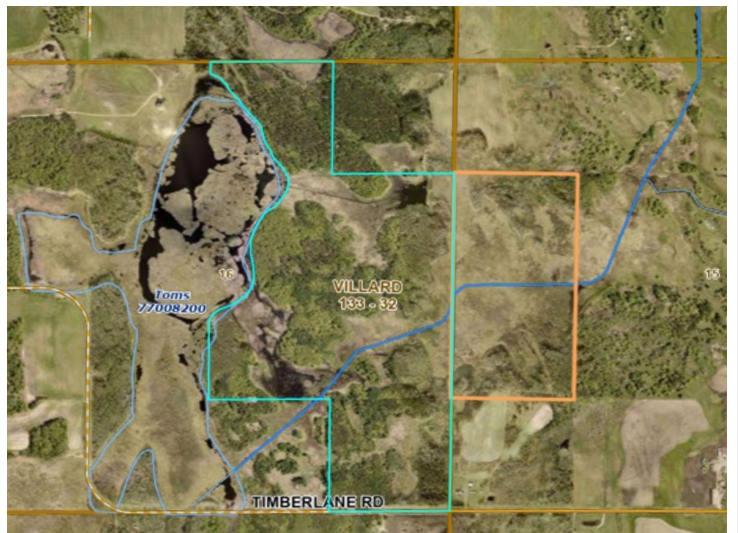
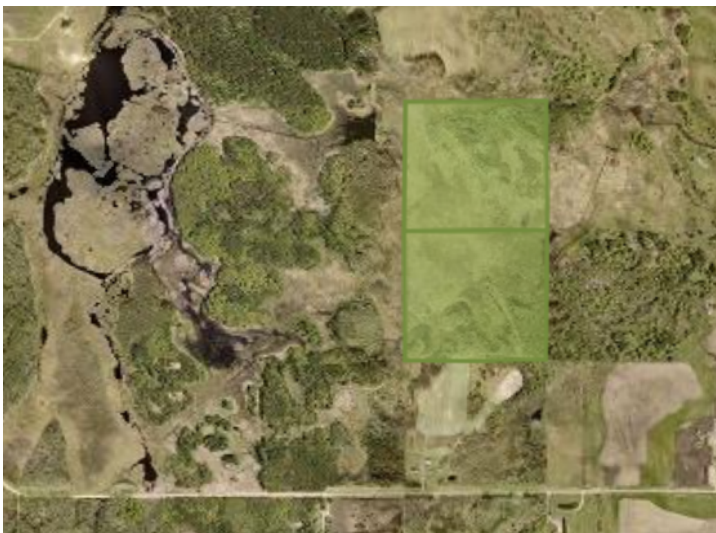
\$299,000
 MLS 6751190 Land
 TBD Timberlane Road
 Staples MN 56479



website: www.AffinityRealEstate.com | email: info@affinityrealestate.com | office: 218-237-3333 | fax: 218-237-3377



\$299,000
 MLS 6751190 Land
 TBD Timberlane Road
 Staples MN 56479



website: www.AffinityRealEstate.com | email: info@affinityrealestate.com | office: 218-237-3333 | fax: 218-237-3377



\$299,000
 MLS 6751190 Land
 TBD Timberlane Road
 Staples MN 56479



website: www.AffinityRealEstate.com | email: info@affinityrealestate.com | office: 218-237-3333 | fax:218-237-3377



\$299,000

MLS 6751190 Land
TBD Timberlane Road
Staples MN 56479