



MLS 6751890 Lake Home

\$799,000

698 sq ft
1 bedrooms
0 baths

2119 Lake Ridge Drive
Pillager MN 56473

Waterfront: Unnamed Lake

Status: Active

Description:

Off-Grid Log Cabin Retreat on 39.03 Acres with Private Lakefront – Nature Meets Seclusion! Escape to peace, privacy, and pristine natural beauty with this off-the-grid log cabin nestled on 39.03 wooded acres—perfectly positioned on the edge of a small, serene lake. This unique property offers the best of both worlds: total seclusion yet close to modern amenities, outdoor recreation, and resort-style living. Property Highlights: Authentic off-grid log cabin with rustic charm and sustainable living features. Expansive 39.03-acre parcel—ideal for recreation, homesteading, or your dream retreat. Lake frontage perfect for canoeing, kayaking, or simply enjoying the view. Surrounded by wildlife, mature trees, and quiet trails for hiking, biking, or horseback riding Prime Location Near: Sylvan Lake & Gull Lake – boating, beaches, fishing, and water sports just minutes away. Multiple top-tier golf courses nearby for enthusiasts. A wide variety of dining options within a short drive. Access to year-round trail systems for ATVs, snowmobiling, and nature walks. Whether you're seeking a private weekend getaway, a hunting cabin, or a year-round off-grid lifestyle, this one-of-a-kind property delivers freedom, tranquility, and adventure in equal measure. Your Off-Grid Paradise Awaits! Contact us today to schedule a private showing and discover the potential of this rare lakefront gem.

Additional Details:

Year Built	1980
Lot Acres	39.03
Lot Dimensions	See Survey
Garage Stalls	1
School District	116
Taxes	\$1,676
Taxes with Assessments	\$1,742
Tax Year	2025

Additional Features:

Fuel: Propane, Wood **Heat:** Wood Stove

Driving Directions:

From Baxter take State Highway 210 West to a right onto County Road 18 to a left onto 125th Street SW and Road will turn into Upper Sylvan Road SW to a right onto E Lake Ridge Drive SW to the property. Call Affinity Real Estate



Listed By:
Edina Realty, Inc.

Affinity Real Estate Inc. participates in the Regional Multiple Listing Service of Minnesota, Inc Broker Reciprocity (sm) program, allowing us to display other broker's listings on our website. All properties are subject to prior sale, change or withdrawal.



218-237-3333

info@affinityrealestate.com



Affinity Real Estate - 600 Park Avenue South - Park Rapids MN 56470



website: www.AffinityRealEstate.com | email: info@affinityrealestate.com | office: 218-237-3333 | fax: 218-237-3377



\$799,000

MLS 6751890 Lake Home
2119 Lake Ridge Drive
Pillager MN 56473



website: www.AffinityRealEstate.com | email: info@affinityrealestate.com | office: 218-237-3333 | fax: 218-237-3377

Affinity
REAL ESTATE INC

\$799,000
MLS 6751890 Lake Home
2119 Lake Ridge Drive
Pillager MN 56473



website: www.AffinityRealEstate.com | email: info@affinityrealestate.com | office: 218-237-3333 | fax: 218-237-3377



\$799,000

MLS 6751890 Lake Home
2119 Lake Ridge Drive
Pillager MN 56473



website: www.AffinityRealEstate.com | email: info@affinityrealestate.com | office: 218-237-3333 | fax: 218-237-3377



\$799,000
 MLS 6751890 Lake Home
 2119 Lake Ridge Drive
 Pillager MN 56473

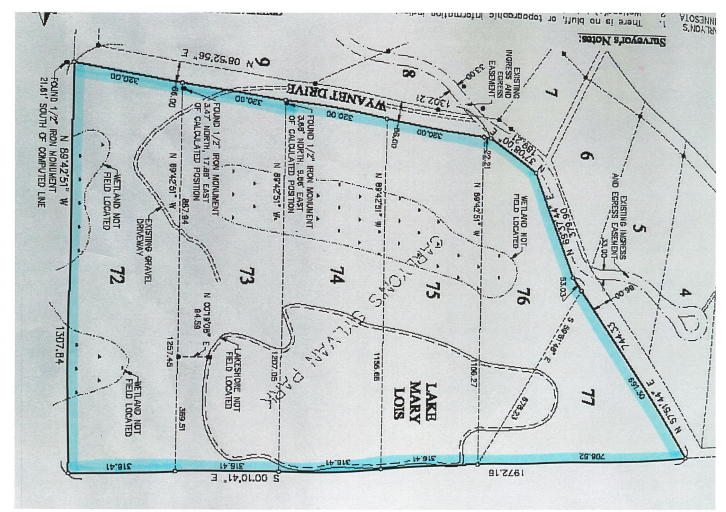
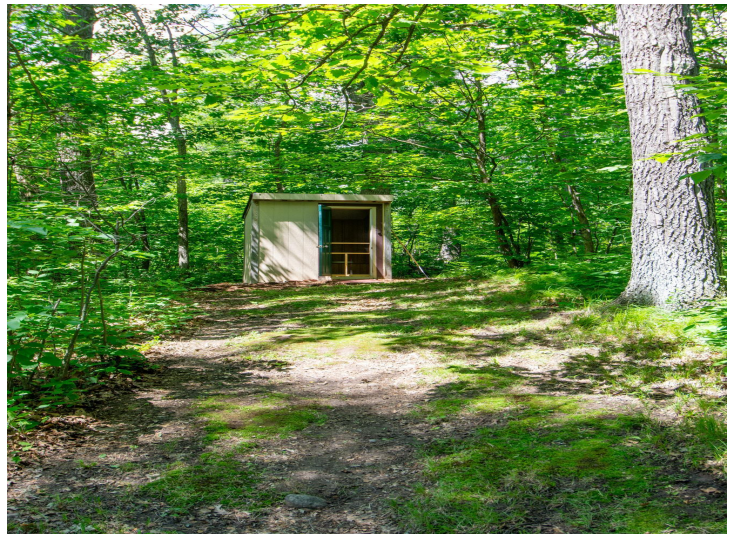


website: www.AffinityRealEstate.com | email: info@affinityrealestate.com | office: 218-237-3333 | fax: 218-237-3377

Affinity
REAL ESTATE INC

\$799,000

MLS 6751890 Lake Home
2119 Lake Ridge Drive
Pillager MN 56473



Page 7 of 10



website: www.AffinityRealEstate.com | email: info@affinityrealestate.com | office: 218-237-3333 | fax: 218-237-3377

Affinity
REAL ESTATE INC

\$799,000
MLS 6751890 Lake Home
2119 Lake Ridge Drive
Pillager MN 56473



website: www.AffinityRealEstate.com | email: info@affinityrealestate.com | office: 218-237-3333 | fax: 218-237-3377

Affinity
REAL ESTATE INC

\$799,000
MLS 6751890 Lake Home
2119 Lake Ridge Drive
Pillager MN 56473



website: www.AffinityRealEstate.com | email: info@affinityrealestate.com | office: 218-237-3333 | fax:218-237-3377



\$799,000

MLS 6751890 Lake Home
2119 Lake Ridge Drive
Pillager MN 56473