



MLS 6752042 Residential

\$244,900

1,900 sq ft
4 bedrooms
2 baths

12805 Oakwood Trail
Pillager MN 56473

Status: Active

Description:

This Pillager home is a fantastic opportunity just minutes from the heart of Pillager and a short drive to all the amenities Brainerd has to offer. The 4-bedroom, 2-bath property is nestled on a spacious corner lot with mature oak trees. Located in a peaceful neighborhood, it offers the perfect balance of quiet living and convenient access to schools, parks, shops, restaurants, and other area attractions.

Inside, the home features a functional and flexible layout with tile flooring and ample space to personalize. While some cosmetic updates are needed, it's a great canvas for those looking to add their own style and value. Step outside to a nice deck, ideal for summer BBQs or simply enjoying the large yard. The home also includes a two-stall garage, providing practical storage and parking space. With solid bones, great outdoor space, and a location that can't be beat, this home is full of potential! Don't wait!

*Lower level 5 bedroom (den) not a legal egress.

Additional Details:


Year Built	1996
Lot Acres	0.92
Lot Dimensions	200 x200
Garage Stalls	2
School District	116
Taxes	\$1,080
Taxes with Assessments	\$1,146
Tax Year	2025

Additional Features:

Fuel: Natural Gas **Heat:** Forced Air

Driving Directions:

From Baxter head West on MN 210 to right on 25th Ave SW, left on Wilderness Drive SW. Left on Oakwood Trail SW Home on the Right 12805 Oakwood Trail. SW Pillager, MN 56



Listed By:
Kurilla Real Estate LTD

Affinity Real Estate Inc. participates in the Regional Multiple Listing Service of Minnesota, Inc Broker Reciprocity (sm) program, allowing us to display other broker's listings on our website. All properties are subject to prior sale, change or withdrawal.



Call Affinity Real Estate

218-237-3333

info@affinityrealestate.com



Affinity Real Estate - 600 Park Avenue South - Park Rapids MN 56470



website: www.AffinityRealEstate.com | email: info@affinityrealestate.com | office: 218-237-3333 | fax: 218-237-3377



\$244,900
MLS 6752042 Residential
12805 Oakwood Trail
Pillager MN 56473



website: www.AffinityRealEstate.com | email: info@affinityrealestate.com | office: 218-237-3333 | fax: 218-237-3377

Affinity
REAL ESTATE INC

\$244,900
MLS 6752042 Residential
12805 Oakwood Trail
Pillager MN 56473



website: www.AffinityRealEstate.com | email: info@affinityrealestate.com | office: 218-237-3333 | fax:218-237-3377



\$244,900
MLS 6752042 Residential
12805 Oakwood Trail
Pillager MN 56473



website: www.AffinityRealEstate.com | email: info@affinityrealestate.com | office: 218-237-3333 | fax:218-237-3377



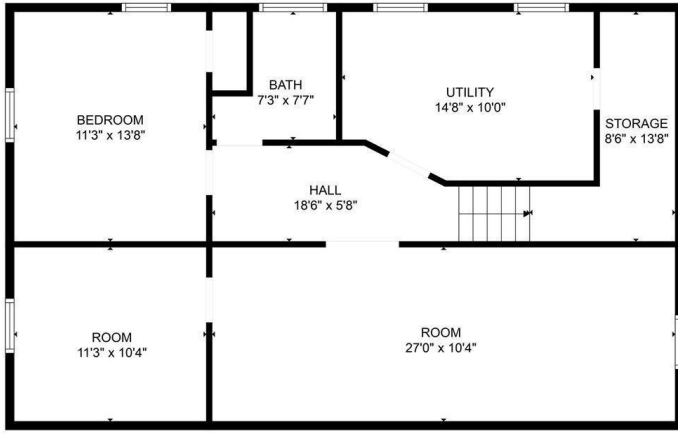
\$244,900
MLS 6752042 Residential
12805 Oakwood Trail
Pillager MN 56473



website: www.AffinityRealEstate.com | email: info@affinityrealestate.com | office: 218-237-3333 | fax:218-237-3377

Affinity
REAL ESTATE INC

\$244,900
MLS 6752042 Residential
12805 Oakwood Trail
Pillager MN 56473



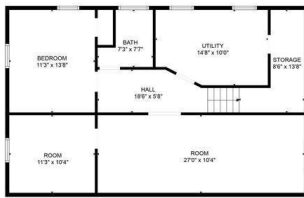
FLOOR PLAN CREATED BY CUBICASA APP. MEASUREMENTS DEEMED HIGHLY RELIABLE BUT NOT GUARANTEED.



FLOOR PLAN CREATED BY CUBICASA APP. MEASUREMENTS DEEMED HIGHLY RELIABLE BUT NOT GUARANTEED.



FLOOR 2



FLOOR 1

FLOOR PLAN CREATED BY CUBICASA APP. MEASUREMENTS DEEMED HIGHLY RELIABLE BUT NOT GUARANTEED.

website: www.AffinityRealEstate.com | email: info@affinityrealestate.com | office: 218-237-3333 | fax:218-237-3377



\$244,900
 MLS 6752042 Residential
 12805 Oakwood Trail
 Pillager MN 56473