



MLS 6752111 Residential

\$239,000

988 sq ft
2 bedrooms
2 baths

4118 Tall Timber Lane
Bemidji MN 56601

Status: Pending

Description:

A cottage home immaculately maintained and nestled amidst a true Minnesotan landscape designed with open concept living that suits any season - envision cozy winter fireplace evenings or sunny summer afternoons in this peaceful space. Additional custom features include trapezoid windows, new kitchen appliances, custom tile showers, hardwood floors, air conditioning, insulated garage with bonus living room above, deck, fully fenced-in yard, and so much more. The property also has wooded privacy, raised garden beds, and a firepit. Enjoy the ease of one-level living with everything you need—kitchen, bedroom, bathroom, and laundry—all conveniently located on the main floor. Ideal for accessibility, comfort, and everyday convenience! The loft bedroom features a spacious ensuite bathroom with a jacuzzi tub and tiled shower, offering comfort and convenience with direct access from the bedroom – perfect for added privacy and relaxation. Don't miss out on this property – schedule your showing today.

Additional Details:

Year Built	2008
Lot Acres	1.72
Lot Dimensions	188x400
Garage Stalls	2
School District	31
Taxes	\$2,606
Taxes with Assessments	\$2,606
Tax Year	2025

Additional Features:

Fuel: Electric, Wood **Heat:** Baseboard, Fireplace(s)

Driving Directions:

From Bemidji take Division St (5th St) west to the Becida Road. Left on the Becida Rd to Country View Dr. (approx 5.5 miles). Right on Country View Dr to Tall Timber Ln. Left on Tall Timber Ln. Home will be on your left.



Listed By:
Better Homes and Gardens Real Estate First Choice

Affinity Real Estate Inc. participates in the Regional Multiple Listing Service of Minnesota, Inc Broker Reciprocity (sm) program, allowing us to display other broker's listings on our website. All properties are subject to prior sale, change or withdrawal.



Call Affinity Real Estate

218-237-3333

info@affinityrealestate.com



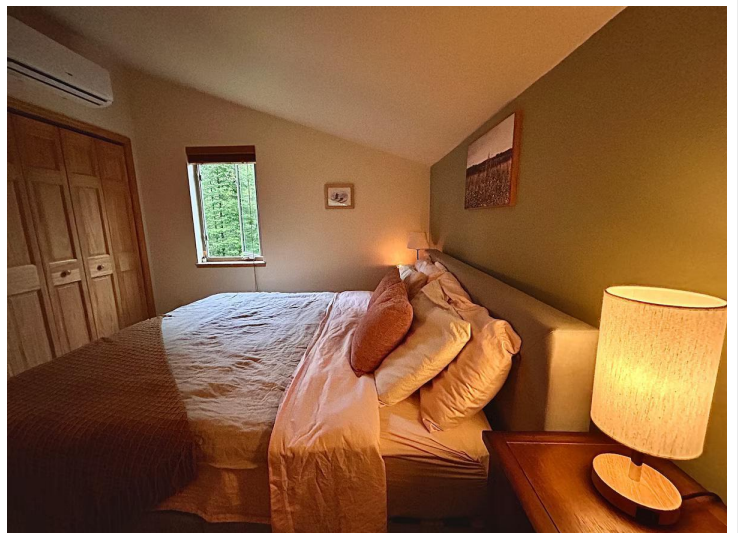
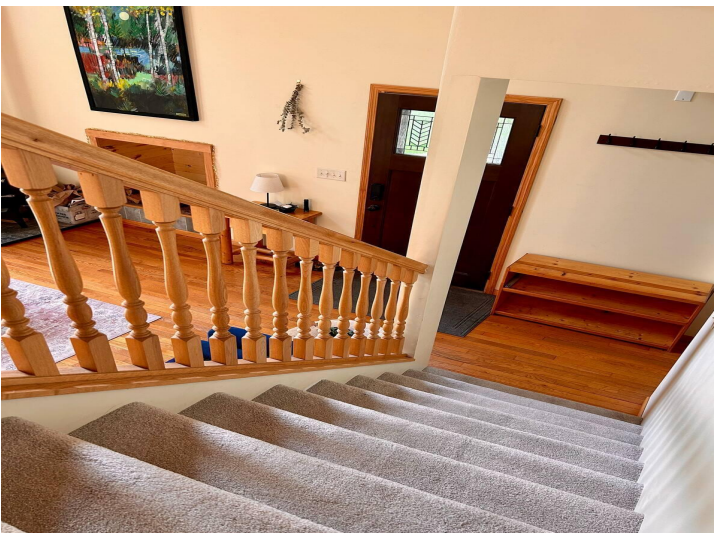
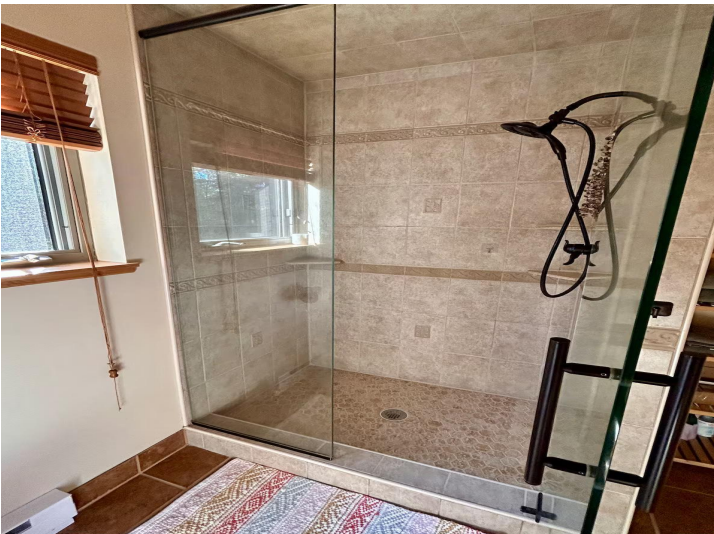
Affinity Real Estate - 600 Park Avenue South - Park Rapids MN 56470



website: www.AffinityRealEstate.com | email: info@affinityrealestate.com | office: 218-237-3333 | fax: 218-237-3377

Affinity
REAL ESTATE INC

\$239,000
MLS 6752111 Residential
4118 Tall Timber Lane
Bemidji MN 56601



website: www.AffinityRealEstate.com | email: info@affinityrealestate.com | office: 218-237-3333 | fax: 218-237-3377

Affinity
REAL ESTATE INC

\$239,000
MLS 6752111 Residential
4118 Tall Timber Lane
Bemidji MN 56601



website: www.AffinityRealEstate.com | email: info@affinityrealestate.com | office: 218-237-3333 | fax: 218-237-3377

Affinity
REAL ESTATE INC

\$239,000
MLS 6752111 Residential
4118 Tall Timber Lane
Bemidji MN 56601



website: www.AffinityRealEstate.com | email: info@affinityrealestate.com | office: 218-237-3333 | fax: 218-237-3377



\$239,000
MLS 6752111 Residential
4118 Tall Timber Lane
Bemidji MN 56601

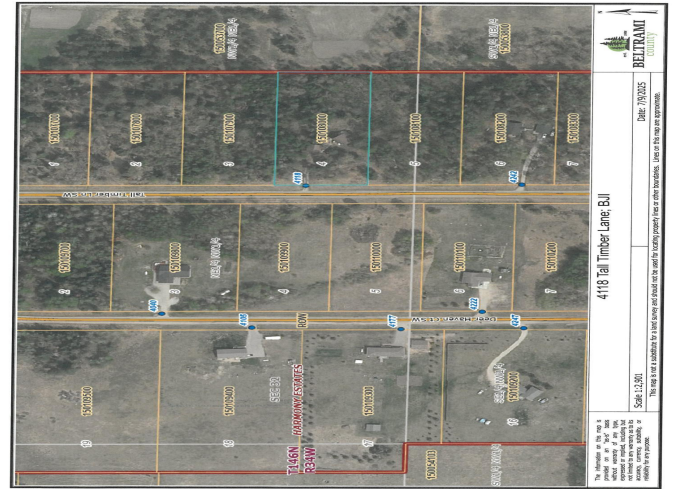


website: www.AffinityRealEstate.com | email: info@affinityrealestate.com | office: 218-237-3333 | fax: 218-237-3377

Affinity
REAL ESTATE INC

\$239,000

MLS 6752111 Residential
4118 Tall Timber Lane
Bemidji MN 56601



website: www.AffinityRealEstate.com | email: info@affinityrealestate.com | office: 218-237-3333 | fax: 218-237-3377



\$239,000
 MLS 6752111 Residential
 4118 Tall Timber Lane
 Bemidji MN 56601