



MLS 6752193 Lake Home

\$459,500

1,129 sq ft
2 bedrooms
2 baths

1020 County 5
Hackensack MN 56452

Waterfront: Boy River

Status: Active

Description:

This home offers classic Northwoods style with beautiful log exterior detailing, a covered entry, and a generous wraparound deck overlooking a spacious yard. Inside, the open-concept kitchen, dining, and living areas sit beneath a soaring cathedral ceiling finished in knotty pine. The living room features a stone gas fireplace, log walls, and windows in the peaks that bring in great natural light. The kitchen is large, with ample cupboard space, and both bedrooms are comfortably sized, one with a charming bay window. There are two bathrooms and knotty pine finishes throughout. Located on the Woman Lake Chain, offering access to over 6,000 acres of water to explore; the setting, space, and craftsmanship make this a great up-north retreat.

Additional Details:

Year Built	1995
Lot Acres	2.3
Lot Dimensions	400x230x300
Garage Stalls	2
School District	113
Taxes	\$1,820
Taxes with Assessments	\$1,886
Tax Year	2025

Additional Features:

Basement: Crawl Space **Fuel:** Electric, Propane **Garage:** 2 **Heat:** Fireplace(s) **Sewer:** Mound Septic, Private Sewer **Water:** Submersible - 4 Inch
Air Conditioning: Window Unit(s)

Driving Directions:

From Longville - Head out of town on Co Rd 5 for 8.8 miles to the subject property.



Listed By:
Heartland Real Estate

Affinity Real Estate Inc. participates in the Regional Multiple Listing Service of Minnesota, Inc Broker Reciprocity (sm) program, allowing us to display other broker's listings on our website. All properties are subject to prior sale, change or withdrawal.



Call Affinity Real Estate

218-237-3333

info@affinityrealestate.com



Affinity Real Estate - 600 Park Avenue South - Park Rapids MN 56470



website: www.AffinityRealEstate.com | email: info@affinityrealestate.com | office: 218-237-3333 | fax: 218-237-3377

Affinity
REAL ESTATE INC

\$459,500
MLS 6752193 Lake Home
1020 County 5
Hackensack MN 56452



website: www.AffinityRealEstate.com | email: info@affinityrealestate.com | office: 218-237-3333 | fax: 218-237-3377

Affinity
REAL ESTATE INC

\$459,500
MLS 6752193 Lake Home
1020 County 5
Hackensack MN 56452



website: www.AffinityRealEstate.com | email: info@affinityrealestate.com | office: 218-237-3333 | fax: 218-237-3377



\$459,500
 MLS 6752193 Lake Home
 1020 County 5
 Hackensack MN 56452



website: www.AffinityRealEstate.com | email: info@affinityrealestate.com | office: 218-237-3333 | fax: 218-237-3377



\$459,500
 MLS 6752193 Lake Home
 1020 County 5
 Hackensack MN 56452



website: www.AffinityRealEstate.com | email: info@affinityrealestate.com | office: 218-237-3333 | fax: 218-237-3377



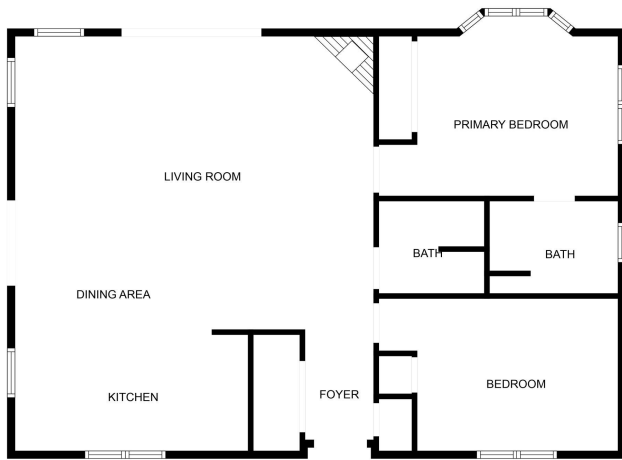
\$459,500
 MLS 6752193 Lake Home
 1020 County 5
 Hackensack MN 56452



website: www.AffinityRealEstate.com | email: info@affinityrealestate.com | office: 218-237-3333 | fax: 218-237-3377



\$459,500
MLS 6752193 Lake Home
1020 County 5
Hackensack MN 56452



FLOOR PLAN CREATED BY CUBICASA APP. MEASUREMENTS DEEMED HIGHLY RELIABLE BUT NOT GUARANTEED.

website: www.AffinityRealEstate.com | email: info@affinityrealestate.com | office: 218-237-3333 | fax: 218-237-3377



\$459,500
 MLS 6752193 Lake Home
 1020 County 5
 Hackensack MN 56452