



MLS 6752229 Residential

**\$419,000**

2,184 sq ft  
4 bedrooms  
2 baths

2580 Lois Lane  
Alexandria MN 56308

Status: Coming Soon

**Description:**

Come check out this classic home in a great neighborhood. This four bedroom, two bath features and open floor plan, custom white kitchen with island seating and stainless steel appliances. The main floor is open and airy with vaulted ceilings, loads of natural light, and ample seating. This updated home features a master en-suite walk-through, big bedrooms, walk-in closets and convenient indoor/outdoor living, with the deck, located directly off the dining area. The basement boasts of tall ceilings, garden view windows, large family room, and two more oversized bedrooms. If you're looking for a newer home, that's been well kept, in a great neighborhood, conveniently located just outside of Alexandria, look no further! This four bedroom, two bath family home is sure to please. Sellers have taken great pride and care of this home. It is move in ready and waiting for you! Don't let this home slip away, schedule your tour today!

**Additional Details:**

Year Built	2018
Lot Acres	0.37
Lot Dimensions	115x140x115x140
Garage Stalls	3
School District	206
Taxes	\$3,124
Taxes with Assessments	\$3,124
Tax Year	2025

**Additional Features:**

**Fuel:** Natural Gas **Heat:** Forced Air

**Driving Directions:**

From Downtown Alexandria. Start on Third Ave E. Turn right on McKay Ave S. Take the second exit onto Hazel Hill Rd SE. Turn left onto Lake Victoria SE and then right onto Lois Ln SE. The home will be on your right.



Listed By:  
Real Estate by Jo, LLC

Affinity Real Estate Inc. participates in the Regional Multiple Listing Service of Minnesota, Inc Broker Reciprocity (sm) program, allowing us to display other broker's listings on our website. All properties are subject to prior sale, change or withdrawal.



**Call Affinity Real Estate**

**218-237-3333**

**info@affinityrealestate.com**



**Affinity Real Estate - 600 Park Avenue South - Park Rapids MN 56470**





website: [www.AffinityRealEstate.com](http://www.AffinityRealEstate.com) | email: [info@affinityrealestate.com](mailto:info@affinityrealestate.com) | office: 218-237-3333 | fax: 218-237-3377



**\$419,000**  
 MLS 6752229 Residential  
 2580 Lois Lane  
 Alexandria MN 56308



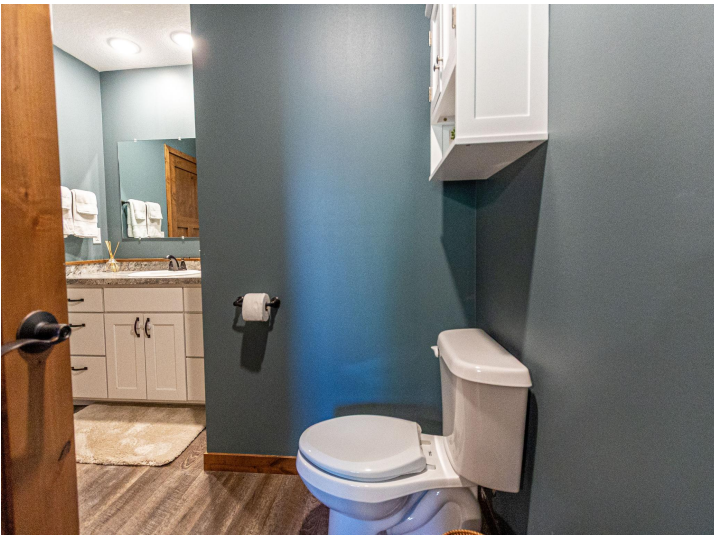


website: [www.AffinityRealEstate.com](http://www.AffinityRealEstate.com) | email: [info@affinityrealestate.com](mailto:info@affinityrealestate.com) | office: 218-237-3333 | fax: 218-237-3377

**Affinity**  
REAL ESTATE INC

**\$419,000**  
MLS 6752229 Residential  
2580 Lois Lane  
Alexandria MN 56308





website: [www.AffinityRealEstate.com](http://www.AffinityRealEstate.com) | email: [info@affinityrealestate.com](mailto:info@affinityrealestate.com) | office: 218-237-3333 | fax: 218-237-3377



**\$419,000**  
 MLS 6752229 Residential  
 2580 Lois Lane  
 Alexandria MN 56308





website: [www.AffinityRealEstate.com](http://www.AffinityRealEstate.com) | email: [info@affinityrealestate.com](mailto:info@affinityrealestate.com) | office: 218-237-3333 | fax: 218-237-3377



**\$419,000**  
 MLS 6752229 Residential  
 2580 Lois Lane  
 Alexandria MN 56308





website: [www.AffinityRealEstate.com](http://www.AffinityRealEstate.com) | email: [info@affinityrealestate.com](mailto:info@affinityrealestate.com) | office: 218-237-3333 | fax: 218-237-3377

**Affinity**  
REAL ESTATE INC

**\$419,000**  
MLS 6752229 Residential  
2580 Lois Lane  
Alexandria MN 56308





website: [www.AffinityRealEstate.com](http://www.AffinityRealEstate.com) | email: [info@affinityrealestate.com](mailto:info@affinityrealestate.com) | office: 218-237-3333 | fax: 218-237-3377



**\$419,000**  
 MLS 6752229 Residential  
 2580 Lois Lane  
 Alexandria MN 56308



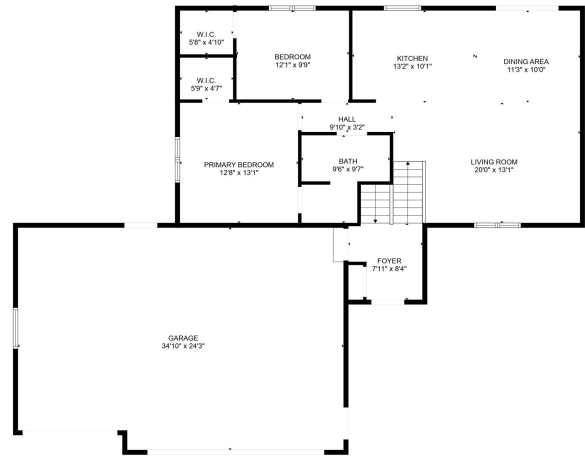


website: [www.AffinityRealEstate.com](http://www.AffinityRealEstate.com) | email: [info@affinityrealestate.com](mailto:info@affinityrealestate.com) | office: 218-237-3333 | fax: 218-237-3377

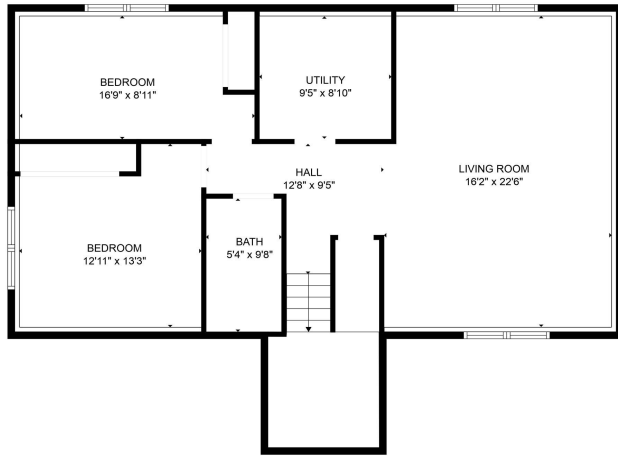
**Affinity**  
REAL ESTATE INC

**\$419,000**  
MLS 6752229 Residential  
2580 Lois Lane  
Alexandria MN 56308





FLOOR PLAN CREATED BY CUBICASA APP. MEASUREMENTS DEEMED HIGHLY RELIABLE BUT NOT GUARANTEED.



FLOOR PLAN CREATED BY CUBICASA APP. MEASUREMENTS DEEMED HIGHLY RELIABLE BUT NOT GUARANTEED.

website: [www.AffinityRealEstate.com](http://www.AffinityRealEstate.com) | email: [info@affinityrealestate.com](mailto:info@affinityrealestate.com) | office: 218-237-3333 | fax: 218-237-3377



**\$419,000**  
 MLS 6752229 Residential  
 2580 Lois Lane  
 Alexandria MN 56308