



MLS 6752293 Land

\$59,900

5 Acres
Raw Land

TBD Wilderness Bay Drive
Park Rapids MN 56470

Status: Pending

Description:

Absolutely beautiful off-lake 5 acre lot. Two hundred feet from the boat landing on Little Mantrap Lake, north of Park Rapids. Driveway is already in and a large area cleared and seeded except for a band of red pine trees separating the open, cleared area from Wilderness Bay Road, offering nice privacy! Surrounded by an abundance of gorgeous red pine, white spruce and newly planted blue spruce. Enjoy lake living without the lake taxes. For all your storage needs, included in the sale is a secure 40' C-container set on a bed of class one gravel. Many lawn and garden items in the C-container are included in the sale and an itemized list can be provided.

Additional Details:

Lot Acres	5
Lot Dimensions	165' x 1318'
School District	309
Taxes	\$174
Taxes with Assessments	\$174
Tax Year	2025

Additional Features:

Driving Directions:

From Park Rapids, go north on Hwy 71 approx 15 miles, turn left onto 42, turn right onto Wilderness Bay Drive. Property is on the left.



Listed By:
Keller Williams Realty Professionals

Affinity Real Estate Inc. participates in the Regional Multiple Listing Service of Minnesota, Inc Broker Reciprocity (sm) program, allowing us to display other broker's listings on our website. All properties are subject to prior sale, change or withdrawal.



Call Affinity Real Estate

218-237-3333

info@affinityrealestate.com



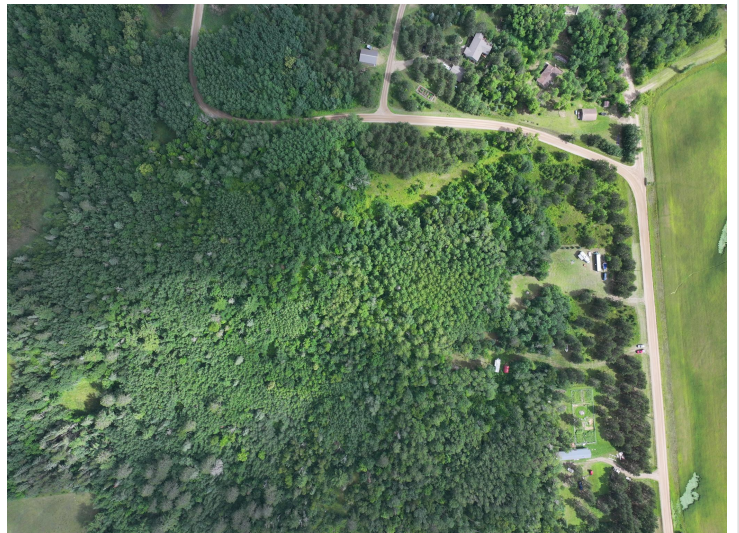
Affinity Real Estate - 600 Park Avenue South - Park Rapids MN 56470



website: www.AffinityRealEstate.com | email: info@affinityrealestate.com | office: 218-237-3333 | fax: 218-237-3377



\$59,900
 MLS 6752293 Land
 TBD Wilderness Bay Drive
 Park Rapids MN 56470



website: www.AffinityRealEstate.com | email: info@affinityrealestate.com | office: 218-237-3333 | fax: 218-237-3377



\$59,900
 MLS 6752293 Land
 TBD Wilderness Bay Drive
 Park Rapids MN 56470



website: www.AffinityRealEstate.com | email: info@affinityrealestate.com | office: 218-237-3333 | fax: 218-237-3377



\$59,900
 MLS 6752293 Land
 TBD Wilderness Bay Drive
 Park Rapids MN 56470

website: www.AffinityRealEstate.com | email: info@affinityrealestate.com | office: 218-237-3333 | fax:218-237-3377



\$59,900

MLS 6752293 Land
TBD Wilderness Bay Drive
Park Rapids MN 56470