



MLS 6752423 Lake Land

\$199,000

Description:

Light the way to lake life with this rare 2.1-acre lot on Lantern Lane NW, tucked into a quiet corner of the Woman Lake Chain within the calm, protected waters of Lantern Bay.

This setting is true Minnesota — lily pads and cattails lining the shore, loons calling at dusk, and sunsets casting golden reflections across the water. It's "Up North" the way it was meant to be: no overbuilt shores, no noise — just you, the pines, and the peaceful rhythm of the lake.

The property is part of a small, relaxed association with only four owners — a rare find that values privacy and flexibility. Campers are welcome, so whether you're ready to build or just want to enjoy lake life right away, you've got options.

A shared dock is already in place along the edge of the property, with plenty of space to tie up for the weekend. Want something more private? There's room to add your own boardwalk and dock to create the access that fits your lifestyle.


From here, motor across Woman Lake to Longville for ice cream and small-town charm, or spend your days exploring the entire chain — chasing Walleye, casting for bass, or just cruising under the summer sun.

Whether you're dreaming of a cozy cabin or a custom lake home, this lot offers the perfect blend of nature, freedom, and adventure.

Lantern Lane isn't just an address — it's a vibe. A beacon guiding you to slower days, richer views, and a future worth building.

Additional Details:

Lot Acres	2.1
Lot Dimensions	Irregular
School District	113
Taxes	\$240
Taxes with Assessments	\$240

 Listed By: 2025
Your Home Sold Guaranteed Realty Exclusive

Affinity Real Estate Inc. participates in the Regional Multiple Listing Service of Minnesota, Inc Broker Reciprocity (sm) program, allowing us to display other broker's listings on our website. All properties are subject to prior sale, change or withdrawal.

Driving Directions:

From Longville go north on Co Rd 5, Left on Timber Dr NW, Right on Lantern Lane NW, Left on Park Ave NW to Park Rapids MN 56470

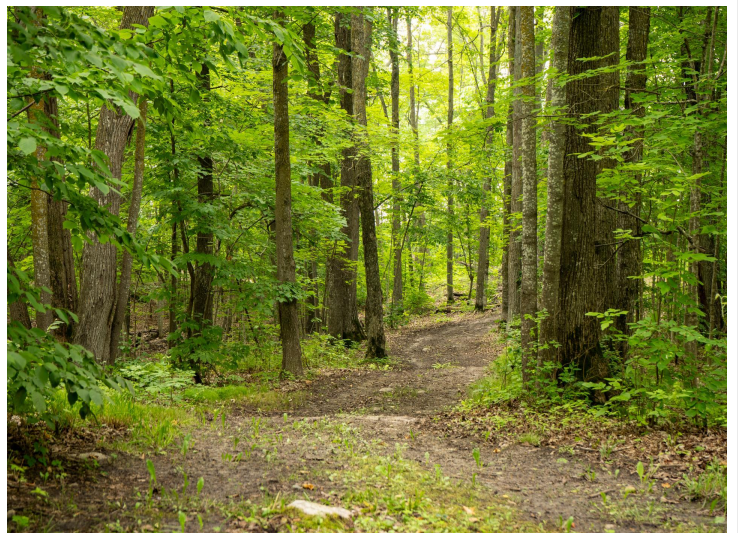


Call Affinity Real Estate

218-237-3333

info@affinityrealestate.com





website: www.AffinityRealEstate.com | email: info@affinityrealestate.com | office: 218-237-3333 | fax: 218-237-3377



\$199,000
 MLS 6752423 Lake Land
 TBD Lantern Lane
 Hackensack MN 56655



website: www.AffinityRealEstate.com | email: info@affinityrealestate.com | office: 218-237-3333 | fax: 218-237-3377

Affinity
REAL ESTATE INC

\$199,000
MLS 6752423 Lake Land
TBD Lantern Lane
Hackensack MN 56655



website: www.AffinityRealEstate.com | email: info@affinityrealestate.com | office: 218-237-3333 | fax: 218-237-3377



\$199,000
MLS 6752423 Lake Land
TBD Lantern Lane
Hackensack MN 56655



website: www.AffinityRealEstate.com | email: info@affinityrealestate.com | office: 218-237-3333 | fax: 218-237-3377



\$199,000
 MLS 6752423 Lake Land
 TBD Lantern Lane
 Hackensack MN 56655



website: www.AffinityRealEstate.com | email: info@affinityrealestate.com | office: 218-237-3333 | fax:218-237-3377



\$199,000

MLS 6752423 Lake Land
TBD Lantern Lane
Hackensack MN 56655