



MLS 6752591 Lake Land

\$399,000

Description:

Discover a rare opportunity to own nearly 7 acres of private land on highly coveted Pickerel Lake, known for its exceptional water clarity — over 30 feet at times! With just over 160 feet of stunning shoreline, this property offers a blend of mature hardwoods and natural wetlands, ideal for a custom lake home, weekend retreat, or future investment. Pickerel Lake is one of the most desirable lakes in Otter Tail County, offering outstanding fishing, fantastic boating & water recreation, and clean, crystal-clear swimming waters. Perfectly located only 20 miles to Fergus Falls and only 12 miles to Underwood, right in the middle of Otter Tail County lakes country. Whether you're looking to build your forever home or secure a slice of lakefront paradise, this property delivers privacy, beauty, and unbeatable lake access. Possibility of building at the path intersections on the high section near County Road 115. Schedule your showing today!

Additional Details:

Lot Acres	6.84
Lot Dimensions	6.84 acres
School District	542
Taxes	\$852
Taxes with Assessments	\$852
Tax Year	2025

Additional Features:

Driving Directions:

Go North on County Highway 35 from the intersection of County Highway 1 and 35. Turn east onto County Road 74 and then turn north onto County Road 115. Turn east onto Shady Nook Drive and to the end of the cul-de-sac. There is a trail next to 31658 that leads to the shoreline.



Listed By:
Trilogy Real Estate

Affinity Real Estate Inc. participates in the Regional Multiple Listing Service of Minnesota, Inc Broker Reciprocity (sm) program, allowing us to display other broker's listings on our website. All properties are subject to prior sale, change or withdrawal.



Call Affinity Real Estate

218-237-3333

info@affinityrealestate.com

MLS



Affinity Real Estate - 600 Park Avenue South - Park Rapids MN 56470



website: www.AffinityRealEstate.com | email: info@affinityrealestate.com | office: 218-237-3333 | fax: 218-237-3377



\$399,000
 MLS 6752591 Lake Land
 XXX Shady Nook Drive
 Underwood MN 56586



website: www.AffinityRealEstate.com | email: info@affinityrealestate.com | office: 218-237-3333 | fax: 218-237-3377



\$399,000
 MLS 6752591 Lake Land
 XXX Shady Nook Drive
 Underwood MN 56586



website: www.AffinityRealEstate.com | email: info@affinityrealestate.com | office: 218-237-3333 | fax: 218-237-3377



\$399,000

MLS 6752591 Lake Land
XXX Shady Nook Drive
Underwood MN 56586



website: www.AffinityRealEstate.com | email: info@affinityrealestate.com | office: 218-237-3333 | fax: 218-237-3377



\$399,000
 MLS 6752591 Lake Land
 XXX Shady Nook Drive
 Underwood MN 56586

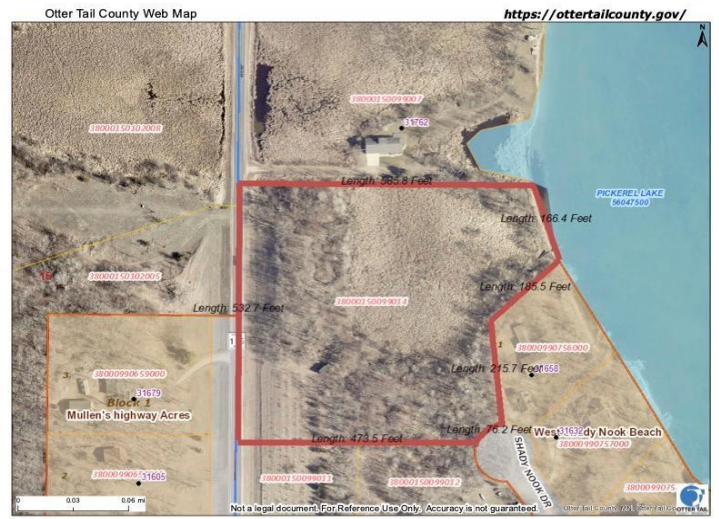


website: www.AffinityRealEstate.com | email: info@affinityrealestate.com | office: 218-237-3333 | fax: 218-237-3377



\$399,000

MLS 6752591 Lake Land
XXX Shady Nook Drive
Underwood MN 56586



website: www.AffinityRealEstate.com | email: info@affinityrealestate.com | office: 218-237-3333 | fax: 218-237-3377



\$399,000
 MLS 6752591 Lake Land
 XXX Shady Nook Drive
 Underwood MN 56586