



MLS 6753002 Land

\$44,900

3.12 Acres
Raw Land

TBD Holly Road
Park Rapids MN 56470

Status: Active

Description:

This beautiful wooded lot, spanning over 3 acres near Blue Lake, is the perfect location for a county home. If you're looking for a place to build a pole barn for extra storage of your lake equipment, this is the ideal spot. Enjoy the benefits of country living while being within walking distance to the access, where you can launch your boat or simply stroll down to fish off the dock.

Additional Details:

Lot Acres	3.12
Lot Dimensions	644x150x195x150x410x300
School District	309
Taxes	\$178
Taxes with Assessments	\$178
Tax Year	2025

Additional Features:

Driving Directions:

North of Park Rapids on County 4. Left on County 40 to Holly Road to lot on right.



Listed By:
Wolff & Simon Real Estate

Affinity Real Estate Inc. participates in the Regional Multiple Listing Service of Minnesota, Inc Broker Reciprocity (sm) program, allowing us to display other broker's listings on our website. All properties are subject to prior sale, change or withdrawal.



Call Affinity Real Estate

218-237-3333

info@affinityrealestate.com



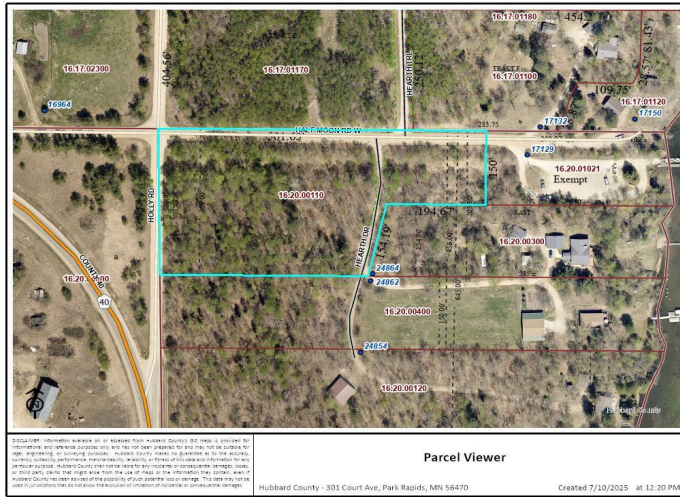
Affinity Real Estate - 600 Park Avenue South - Park Rapids MN 56470



website: www.AffinityRealEstate.com | email: info@affinityrealestate.com | office: 218-237-3333 | fax: 218-237-3377



\$44,900
 MLS 6753002 Land
 TBD Holly Road
 Park Rapids MN 56470



website: www.AffinityRealEstate.com | email: info@affinityrealestate.com | office: 218-237-3333 | fax:218-237-3377



\$44,900
MLS 6753002 Land
TBD Holly Road
Park Rapids MN 56470