



MLS 6753033 Residential

**\$309,900**

2,244 sq ft  
4 bedrooms  
2 baths

1420 4th Street  
Wadena MN 56482

Status: Active

**Description:**

Not Many like this one.

What a perfect spot for this well-cared-for 4-bedroom 2 full bath home. Deer, turkeys, ducks, and geese can be seen almost every day across the street at Tapley Park. (I have counted at least 18 deer in the park.) Like to sled? Enjoy Toby's Hill, just a 2-block walk. Situated on a corner lot, this split-level home has many updates, including a newer furnace and central air, updated countertops and tiled backsplash, updated appliances, microwave, fridge, and dishwasher. Enjoy the fireplace in the family room, or work on a project in the additional 2-car 30x24 detached garage. Added BONUS- Seller is motivated and is willing to look at all reasonable offers!! A must-see at this price! Call now for your personal tour.

**Additional Details:**

Year Built	2002
Lot Acres	0.29
Lot Dimensions	90x140
Garage Stalls	4
School District	2155
Taxes	\$3,500
Taxes with Assessments	\$3,500
Tax Year	2025

**Additional Features:**

**Basement:** Egress Window(s), Finished, Full **Fuel:** Natural Gas **Garage:** 4 **Heat:** Forced Air, Fireplace(s) **Sewer:** City Sewer/Connected  
**Water:** City Water/Connected **Air Conditioning:** Central Air

**Driving Directions:**

From Jefferson St West on Madison to 4th St SW then South to property



Listed By:  
Premier Realty Group

Affinity Real Estate Inc. participates in the Regional Multiple Listing Service of Minnesota, Inc Broker Reciprocity (sm) program, allowing us to display other broker's listings on our website. All properties are subject to prior sale, change or withdrawal.



**Call Affinity Real Estate**

**218-237-3333**

**info@affinityrealestate.com**



**Affinity Real Estate - 600 Park Avenue South - Park Rapids MN 56470**





website: [www.AffinityRealEstate.com](http://www.AffinityRealEstate.com) | email: [info@affinityrealestate.com](mailto:info@affinityrealestate.com) | office: 218-237-3333 | fax: 218-237-3377



**\$309,900**  
 MLS 6753033 Residential  
 1420 4th Street  
 Wadena MN 56482





website: [www.AffinityRealEstate.com](http://www.AffinityRealEstate.com) | email: [info@affinityrealestate.com](mailto:info@affinityrealestate.com) | office: 218-237-3333 | fax: 218-237-3377

**Affinity**  
REAL ESTATE INC

**\$309,900**  
MLS 6753033 Residential  
1420 4th Street  
Wadena MN 56482





website: [www.AffinityRealEstate.com](http://www.AffinityRealEstate.com) | email: [info@affinityrealestate.com](mailto:info@affinityrealestate.com) | office: 218-237-3333 | fax: 218-237-3377

**Affinity**  
REAL ESTATE INC

**\$309,900**  
MLS 6753033 Residential  
1420 4th Street  
Wadena MN 56482



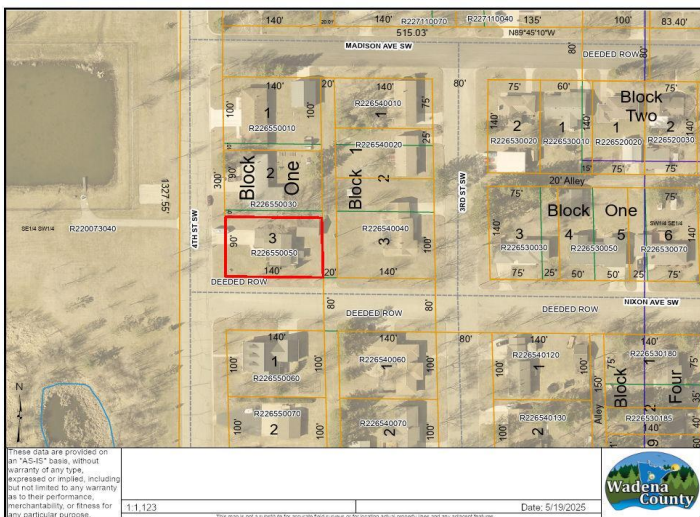


website: [www.AffinityRealEstate.com](http://www.AffinityRealEstate.com) | email: [info@affinityrealestate.com](mailto:info@affinityrealestate.com) | office: 218-237-3333 | fax: 218-237-3377

**Affinity**  
REAL ESTATE INC

**\$309,900**  
MLS 6753033 Residential  
1420 4th Street  
Wadena MN 56482





website: [www.AffinityRealEstate.com](http://www.AffinityRealEstate.com) | email: [info@affinityrealestate.com](mailto:info@affinityrealestate.com) | office: 218-237-3333 | fax: 218-237-3377



**\$309,900**  
 MLS 6753033 Residential  
 1420 4th Street  
 Wadena MN 56482