



MLS 6753121 Residential

\$329,900

1,993 sq ft
3 bedrooms
3 baths

15539 Essex Road
Park Rapids MN 56470

Status: Hold

Description:

Enjoy peaceful pond views from this beautifully maintained 3-bedroom, 3-bathroom home on scenic Red Wing Pond. The spacious layout features open concept living, a finished basement, and plenty of natural light throughout. Located just minutes from downtown Park Rapids, you will have easy access to shopping, dining, and outdoor recreation. Golfers and nature lovers will appreciate the proximity to Headwaters Gold Course and the Heartland Trail. Whether you are looking for a comfortable year round home or a weekend retreat, this home offers the perfect blend of tranquility and convenience.

Additional Details:

Year Built	2002
Lot Acres	3.07
Lot Dimensions	292x388xIRREGULAR
Garage Stalls	2
School District	309
Taxes	\$1,781
Taxes with Assessments	\$2,002
Tax Year	2025

Additional Features:

Basement: Daylight/Lookout Windows, Finished **Fuel:** Electric, Natural Gas **Garage:** 2 **Heat:** Baseboard, Ductless Mini-Split, Forced Air
Sewer: Tank with Drainage Field **Water:** Submersible - 4 Inch **Air Conditioning:** Ductless Mini-Split

Driving Directions:

From Park Rapids: Head East on 34, left on North Henrietta Ave, left onto Essex Rd to the property on the left.



Listed By:
Coldwell Banker Crown Realtors

Affinity Real Estate Inc. participates in the Regional Multiple Listing Service of Minnesota, Inc Broker Reciprocity (sm) program, allowing us to display other broker's listings on our website. All properties are subject to prior sale, change or withdrawal.



Call Affinity Real Estate

218-237-3333

info@affinityrealestate.com



Affinity Real Estate - 600 Park Avenue South - Park Rapids MN 56470



website: www.AffinityRealEstate.com | email: info@affinityrealestate.com | office: 218-237-3333 | fax: 218-237-3377

Affinity
REAL ESTATE INC

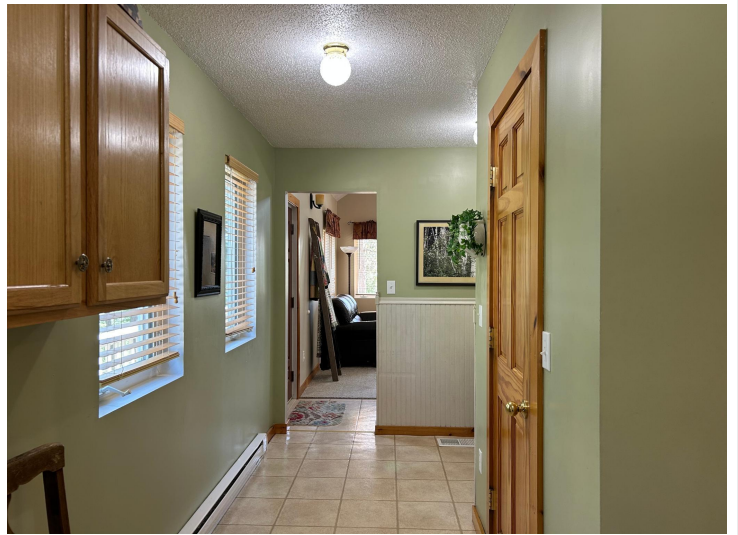
\$329,900
MLS 6753121 Residential
15539 Essex Road
Park Rapids MN 56470



website: www.AffinityRealEstate.com | email: info@affinityrealestate.com | office: 218-237-3333 | fax: 218-237-3377

Affinity
REAL ESTATE INC

\$329,900
MLS 6753121 Residential
15539 Essex Road
Park Rapids MN 56470



website: www.AffinityRealEstate.com | email: info@affinityrealestate.com | office: 218-237-3333 | fax: 218-237-3377



\$329,900
 MLS 6753121 Residential
 15539 Essex Road
 Park Rapids MN 56470



website: www.AffinityRealEstate.com | email: info@affinityrealestate.com | office: 218-237-3333 | fax: 218-237-3377



\$329,900
 MLS 6753121 Residential
 15539 Essex Road
 Park Rapids MN 56470



website: www.AffinityRealEstate.com | email: info@affinityrealestate.com | office: 218-237-3333 | fax: 218-237-3377



\$329,900
MLS 6753121 Residential
15539 Essex Road
Park Rapids MN 56470