



MLS 6753215 Residential

\$199,900

1,401 sq ft
3 bedrooms
2 baths

600 Gilbert Avenue
Park Rapids MN 56470

Status: Active

Description:

City Home in Park Rapids! This charming residence boasts three bedrooms and two bathrooms. Enjoy the comfort of an attached insulated and heated two-car garage, large fenced-in backyard is perfect for gatherings or peaceful retreats, complemented by an additional storage shed for your convenience. Ideally situated just minutes from the vibrant downtown Park Rapids, Fish Hook Lake, Heartland Trail, and a host of recreational opportunities, this home offers the perfect blend of comfort and accessibility. Call for an appointment today.

Additional Details:

Year Built	1938
Lot Acres	0.24
Lot Dimensions	140x75x140x75
School District	309
Taxes	\$1,931
Taxes with Assessments	\$2,151
Tax Year	2025

Additional Features:

Basement: Partially Finished **Fuel:** Natural Gas **Heat:** Forced Air **Sewer:** City Sewer/Connected **Water:** City Water/Connected **Air Conditioning:** Central Air

Driving Directions:

From Park Rapids Hwy 34/71 head South on Highway 71 to 6th Street W. Head East on 6th Street to property on right.



Listed By:
Wolff & Simon Real Estate

Affinity Real Estate Inc. participates in the Regional Multiple Listing Service of Minnesota, Inc Broker Reciprocity (sm) program, allowing us to display other broker's listings on our website. All properties are subject to prior sale, change or withdrawal.



Call Affinity Real Estate

218-237-3333

info@affinityrealestate.com



Affinity Real Estate - 600 Park Avenue South - Park Rapids MN 56470



website: www.AffinityRealEstate.com | email: info@affinityrealestate.com | office: 218-237-3333 | fax: 218-237-3377

Affinity
REAL ESTATE INC

\$199,900
MLS 6753215 Residential
600 Gilbert Avenue
Park Rapids MN 56470



website: www.AffinityRealEstate.com | email: info@affinityrealestate.com | office: 218-237-3333 | fax: 218-237-3377

Affinity
REAL ESTATE INC

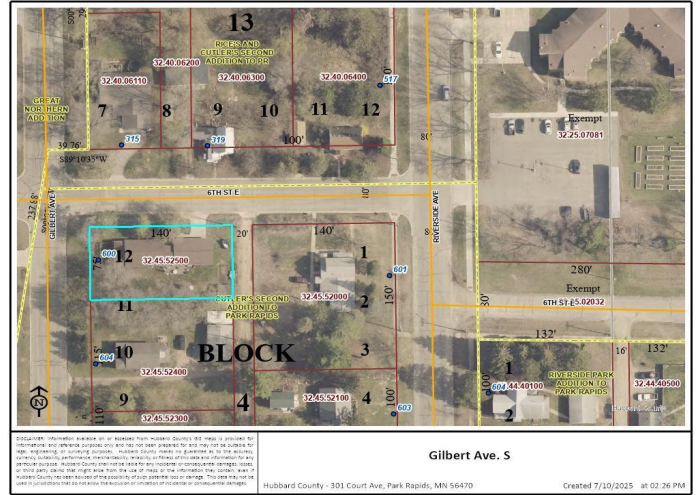
\$199,900
MLS 6753215 Residential
600 Gilbert Avenue
Park Rapids MN 56470



website: www.AffinityRealEstate.com | email: info@affinityrealestate.com | office: 218-237-3333 | fax: 218-237-3377

Affinity
REAL ESTATE INC

\$199,900
MLS 6753215 Residential
600 Gilbert Avenue
Park Rapids MN 56470



website: www.AffinityRealEstate.com | email: info@affinityrealestate.com | office: 218-237-3333 | fax: 218-237-3377



\$199,900
 MLS 6753215 Residential
 600 Gilbert Avenue
 Park Rapids MN 56470