



MLS 6753251 Residential

\$379,900

2,264 sq ft
4 bedrooms
3 baths

21578 Edwards Drive
Ironton MN 56455

Status: Active

Description:

Move-in ready 4-bedroom, 3-bath home in a desirable "just out of town" Ironton location. Conveniently located just minutes from the Cuyuna Rec Area, shopping, restaurants, clinic & hospital. Features include a heated and insulated 2-car attached garage, main floor primary bedroom with full bath, and main floor laundry. Bright kitchen with breakfast bar and ample cabinetry. Lower level offers a spacious family room, two baths, and three additional bedrooms. Make an appointment today!

Additional Details:

Year Built	2000
Lot Acres	0.91
Lot Dimensions	132x298x187x298
Garage Stalls	2
School District	182
Taxes	\$1,287
Taxes with Assessments	\$1,312
Tax Year	2025

Additional Features:

Basement: Egress Window(s), Finished, Full, Wood **Fuel:** Natural Gas **Garage:** 2 **Heat:** Forced Air **Sewer:** Tank with Drainage Field
Water: Submersible - 4 Inch, Drilled **Air Conditioning:** Central Air

Driving Directions:

210 to Winona, go South to Edwards Drive To home on Left.



Listed By:
Coldwell Banker Crown Realtors

Affinity Real Estate Inc. participates in the Regional Multiple Listing Service of Minnesota, Inc Broker Reciprocity (sm) program, allowing us to display other broker's listings on our website. All properties are subject to prior sale, change or withdrawal.



Call Affinity Real Estate
218-237-3333
info@affinityrealestate.com



Affinity Real Estate - 600 Park Avenue South - Park Rapids MN 56470



website: www.AffinityRealEstate.com | email: info@affinityrealestate.com | office: 218-237-3333 | fax: 218-237-3377

Affinity
REAL ESTATE INC

\$379,900
MLS 6753251 Residential
21578 Edwards Drive
Ironton MN 56455



website: www.AffinityRealEstate.com | email: info@affinityrealestate.com | office: 218-237-3333 | fax: 218-237-3377



\$379,900
 MLS 6753251 Residential
 21578 Edwards Drive
 Ironton MN 56455



website: www.AffinityRealEstate.com | email: info@affinityrealestate.com | office: 218-237-3333 | fax: 218-237-3377

Affinity
REAL ESTATE INC

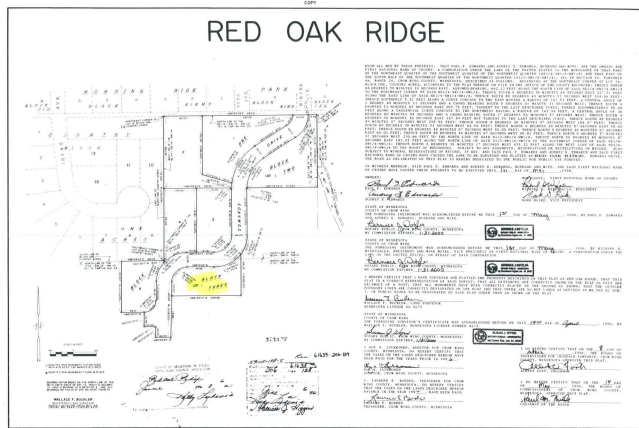
\$379,900
MLS 6753251 Residential
21578 Edwards Drive
Ironton MN 56455



website: www.AffinityRealEstate.com | email: info@affinityrealestate.com | office: 218-237-3333 | fax: 218-237-3377



\$379,900
 MLS 6753251 Residential
 21578 Edwards Drive
 Ironton MN 56455



website: www.AffinityRealEstate.com | email: info@affinityrealestate.com | office: 218-237-3333 | fax: 218-237-3377



\$379,900
 MLS 6753251 Residential
 21578 Edwards Drive
 Ironton MN 56455