



MLS 6753451 Residential

\$975,000

1,161 sq ft
2 bedrooms
2 baths

24634 Wooded Trail
Crosby MN 56441

Status: Active

Description:

Tucked away in the heart of lake country you will find this heavily wooded 160-acre parcel with a 2-bedroom home and pole shed! This property is a hunter's dream come true with a secluded setting, abundance of wildlife, several trails and deer stands already set up. Up north charm abounds in this well thought out property with natural wood interiors, vaulted ceiling, beautiful cabinets, 2 bedrooms on the main floor and a loft area for additional sleeping space! You will find plenty of garage space for all the toys with a one-car attached garage, 30x34 pole shed and a storage shed. Whether you enjoy hunting or are an outdoor enthusiast, this property will provide you with privacy, seclusion and plenty of room to roam with 160 beautiful, wooded acres ~ this is a great property!

Additional Details:

| | |
|------------------------|-----------|
| Year Built | 2013 |
| Lot Acres | 160 |
| Lot Dimensions | irregular |
| Garage Stalls | 3 |
| School District | 182 |
| Taxes | \$2,629 |
| Taxes with Assessments | \$2,654 |
| Tax Year | 2025 |

Additional Features:

Fuel: Electric **Heat:** Baseboard

Driving Directions:

From Brainerd, go E. on Hwy 210 toward Crosby, turn left on #30 (Irene Ave), left on #34, right on Bluebird Ave, left on Miller Lake Road, right on Wooded Trail to home on right #24634



Listed By:
Edina Realty, Inc.

Affinity Real Estate Inc. participates in the Regional Multiple Listing Service of Minnesota, Inc Broker Reciprocity (sm) program, allowing us to display other broker's listings on our website. All properties are subject to prior sale, change or withdrawal.



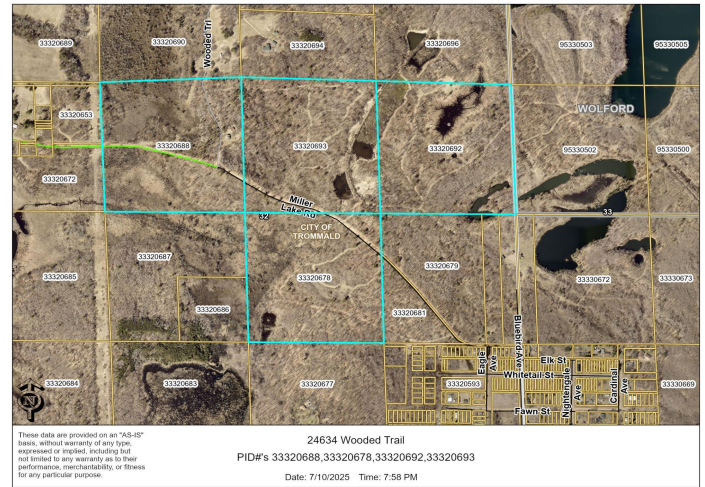
Call Affinity Real Estate

218-237-3333

info@affinityrealestate.com



Affinity Real Estate - 600 Park Avenue South - Park Rapids MN 56470



website: www.AffinityRealEstate.com | email: info@affinityrealestate.com | office: 218-237-3333 | fax: 218-237-3377

Affinity
REAL ESTATE INC

\$975,000
MLS 6753451 Residential
24634 Wooded Trail
Crosby MN 56441



website: www.AffinityRealEstate.com | email: info@affinityrealestate.com | office: 218-237-3333 | fax: 218-237-3377

Affinity
REAL ESTATE INC

\$975,000
MLS 6753451 Residential
24634 Wooded Trail
Crosby MN 56441



website: www.AffinityRealEstate.com | email: info@affinityrealestate.com | office: 218-237-3333 | fax: 218-237-3377

Affinity
REAL ESTATE INC

\$975,000
MLS 6753451 Residential
24634 Wooded Trail
Crosby MN 56441



website: www.AffinityRealEstate.com | email: info@affinityrealestate.com | office: 218-237-3333 | fax: 218-237-3377

Affinity
REAL ESTATE INC

\$975,000
MLS 6753451 Residential
24634 Wooded Trail
Crosby MN 56441



website: www.AffinityRealEstate.com | email: info@affinityrealestate.com | office: 218-237-3333 | fax: 218-237-3377



\$975,000
 MLS 6753451 Residential
 24634 Wooded Trail
 Crosby MN 56441



website: www.AffinityRealEstate.com | email: info@affinityrealestate.com | office: 218-237-3333 | fax: 218-237-3377



\$975,000

MLS 6753451 Residential
24634 Wooded Trail
Crosby MN 56441