



MLS 6753504 Residential

**\$529,000**

2,458 sq ft  
3 bedrooms  
3 baths

250 Rodeo Road  
Alexandria MN 56308

Status: Active

#### Description:

Luxury Meets Comfort at Arabella Ranch - Discover the perfect blend of elegance and ease in this beautifully designed 2-bedroom, 3-bathroom home, thoughtfully crafted for one-level living with added bonus spaces to suit your lifestyle. Located in the desirable Arabella Ranch community, this residence offers comfort, functionality, and refined style throughout.

Step inside to an open-concept layout filled with natural light. The spacious kitchen features custom cabinetry, a striking backsplash, granite countertops, and a center island with seating—ideal for everyday living or entertaining guests. The dining area flows seamlessly into the cozy living room, where a gas fireplace adds warmth and charm.

Enjoy the luxury of the owner's suite, complete with a dual-sink vanity, tiled walk-in shower, and a generous walk-in closet that includes a built-in safe room for peace of mind. A second bedroom and additional full bath provide space and privacy for guests.

Upstairs, a large bonus room offers endless possibilities—a 3rd bedroom/guest retreat, office, or hobby space. Relax in the inviting 3-season porch, or step outdoors and enjoy the peaceful, well-manicured surroundings.

The oversized 2-stall garage with 18' door is fully insulated and features in-floor heat, an epoxy finished floor, abundant storage, and convenience for all seasons. In-floor heating runs throughout the home, ensuring energy efficiency with 3 heating zones maximizing cozy comfort year-round. Additional touches such as main-floor laundry, quality finishes throughout, and full gutters surrounding the entire home reflect a high level of maintenance and care—making this home truly move-in ready.

Experience the lifestyle of Arabella Ranch, where quality construction, thoughtful design, and comfort come together in a peaceful neighborhood setting. This home is a must-see.

#### Additional Details:

Year Built	2020
Lot Acres	0.08
Lot Dimensions	50 70 50 70
Garage Stalls	2
School District	206
Taxes	\$4,952
Taxes with Assessments	\$4,952

1  Listed By: 2025  
Counselor Realty Inc of Alex

#### Additional Features:

Affinity Real Estate Inc. participates in the Regional Multiple Listing Service of Minnesota, Inc Broker Reciprocity (rm) program, allowing us to display other broker's listings on our website. All properties are subject to prior sale, change or withdrawal.

#### Driving Directions:



Call Affinity Real Estate

**218-237-3333**

[info@affinityrealestate.com](mailto:info@affinityrealestate.com)

Basement: None Fuel: Natural Gas Garage: 2 Heat: Forced Air Radiant Heat: None Sewer: City Sewer/Connected Water: City Water/Connected Air Conditioning: Central Air

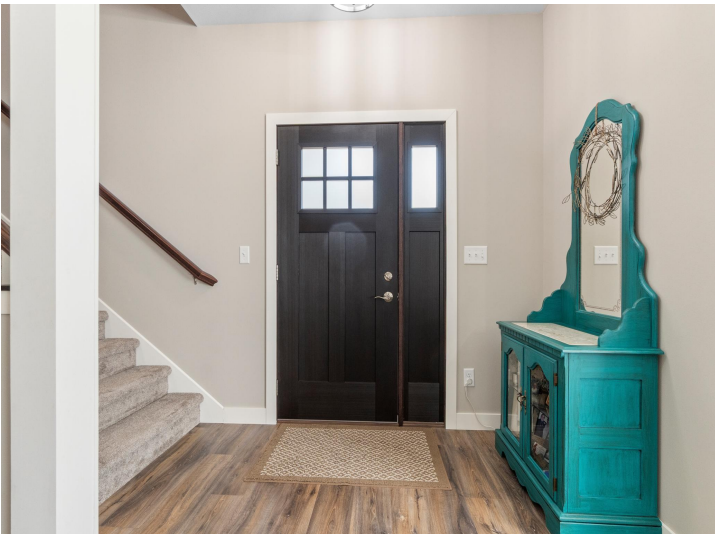
MLS



Affinity Real Estate - 600 Park Avenue South - Park Rapids MN 56470

County Road 82 East, left on McKay Avenue, right on Darling Avenue East, left on Rodeo Road





website: [www.AffinityRealEstate.com](http://www.AffinityRealEstate.com) | email: [info@affinityrealestate.com](mailto:info@affinityrealestate.com) | office: 218-237-3333 | fax: 218-237-3377

**Affinity**  
REAL ESTATE INC

**\$529,000**  
MLS 6753504 Residential  
250 Rodeo Road  
Alexandria MN 56308



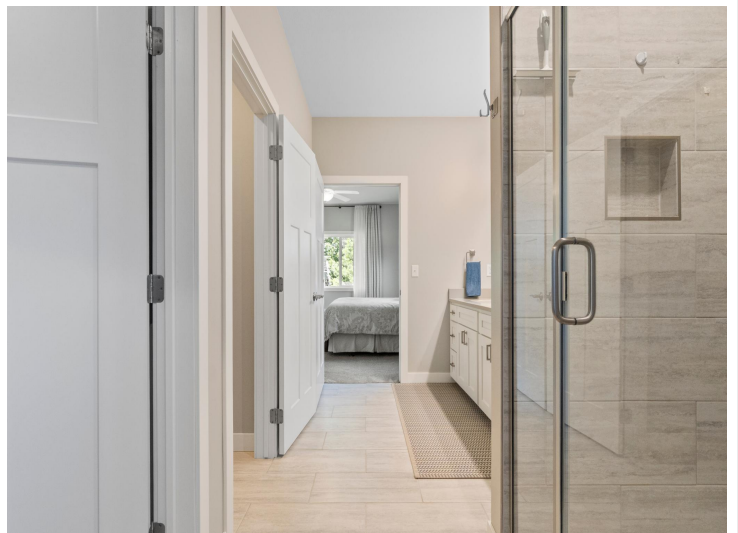


website: [www.AffinityRealEstate.com](http://www.AffinityRealEstate.com) | email: [info@affinityrealestate.com](mailto:info@affinityrealestate.com) | office: 218-237-3333 | fax: 218-237-3377

**Affinity**  
REAL ESTATE INC

**\$529,000**  
MLS 6753504 Residential  
250 Rodeo Road  
Alexandria MN 56308





website: [www.AffinityRealEstate.com](http://www.AffinityRealEstate.com) | email: [info@affinityrealestate.com](mailto:info@affinityrealestate.com) | office: 218-237-3333 | fax: 218-237-3377



**\$529,000**  
MLS 6753504 Residential  
250 Rodeo Road  
Alexandria MN 56308





website: [www.AffinityRealEstate.com](http://www.AffinityRealEstate.com) | email: [info@affinityrealestate.com](mailto:info@affinityrealestate.com) | office: 218-237-3333 | fax: 218-237-3377



**\$529,000**  
 MLS 6753504 Residential  
 250 Rodeo Road  
 Alexandria MN 56308





website: [www.AffinityRealEstate.com](http://www.AffinityRealEstate.com) | email: [info@affinityrealestate.com](mailto:info@affinityrealestate.com) | office: 218-237-3333 | fax: 218-237-3377

**Affinity**  
REAL ESTATE INC

**\$529,000**  
MLS 6753504 Residential  
250 Rodeo Road  
Alexandria MN 56308





website: [www.AffinityRealEstate.com](http://www.AffinityRealEstate.com) | email: [info@affinityrealestate.com](mailto:info@affinityrealestate.com) | office: 218-237-3333 | fax: 218-237-3377

**Affinity**  
REAL ESTATE INC

**\$529,000**  
MLS 6753504 Residential  
250 Rodeo Road  
Alexandria MN 56308





website: [www.AffinityRealEstate.com](http://www.AffinityRealEstate.com) | email: [info@affinityrealestate.com](mailto:info@affinityrealestate.com) | office: 218-237-3333 | fax: 218-237-3377



**\$529,000**  
 MLS 6753504 Residential  
 250 Rodeo Road  
 Alexandria MN 56308





website: [www.AffinityRealEstate.com](http://www.AffinityRealEstate.com) | email: [info@affinityrealestate.com](mailto:info@affinityrealestate.com) | office: 218-237-3333 | fax:218-237-3377



**\$529,000**  
MLS 6753504 Residential  
250 Rodeo Road  
Alexandria MN 56308