



MLS 6753536 Residential

**\$349,000**

1,539 sq ft  
3 bedrooms  
2 baths

411 Russ Parta Drive  
New York Mills MN 56567

Status: Active

**Description:**

This house is now complete, finished under budget. Now offered at \$349,000. With 1539 sq ft it features a master suite on one end with a large walk-in closet and a nicely sized private bathroom. A designated desk area in the hall. Two more bedrooms and a bathroom on the opposite side of the house. A vaulted kitchen, dining room, and living room area in the center. A laundry room and large pantry closet right off the kitchen. A two-car heated garage with a storm shelter room built in the corner. Access to the whole house with no steps.

Outside, you will find a nice backyard with a wooded area behind, which would allow for no future neighbors. A small playground area down the block for potential children or grandchildren to play. The New York Mills school is also located nearby. This home is located in a newer development with established homes, near a cul-de-sac, which creates less traffic.

A \$10,000 property tax rebate is included over the next 5 years.

Come and see the newly completed home, designed for the ease and comfort of both the retired or a small family to enjoy.

**Additional Details:**

Year Built	2025
Lot Acres	0.46
Lot Dimensions	96x184
Garage Stalls	2
School District	553
Taxes	(unreported)
Taxes with Assessments	(unreported)
Tax Year	2025

**Additional Features:**

**Basement:** None **Fuel:** Natural Gas **Garage:** 2 **Heat:** Forced Air, Radiant Floor **Sewer:** City Sewer/Connected **Water:** City Water/Connected **Air Conditioning:** Central Air

**Driving Directions:**

411 Russ Parta Dr. New York Mills



Listed By:  
Century 21 Atwood

Affinity Real Estate Inc. participates in the Regional Multiple Listing Service of Minnesota, Inc Broker Reciprocity (sm) program, allowing us to display other broker's listings on our website. All properties are subject to prior sale, change or withdrawal.



**Call Affinity Real Estate**

**218-237-3333**

**info@affinityrealestate.com**



**Affinity Real Estate - 600 Park Avenue South - Park Rapids MN 56470**



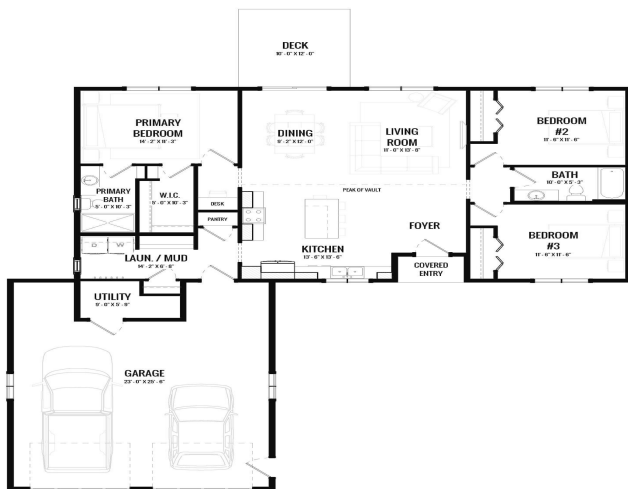


website: [www.AffinityRealEstate.com](http://www.AffinityRealEstate.com) | email: [info@affinityrealestate.com](mailto:info@affinityrealestate.com) | office: 218-237-3333 | fax: 218-237-3377



**\$349,000**  
 MLS 6753536 Residential  
 411 Russ Parta Drive  
 New York Mills MN 56567





website: [www.AffinityRealEstate.com](http://www.AffinityRealEstate.com) | email: [info@affinityrealestate.com](mailto:info@affinityrealestate.com) | office: 218-237-3333 | fax: 218-237-3377

**Affinity**  
REAL ESTATE INC

**\$349,000**  
MLS 6753536 Residential  
411 Russ Parta Drive  
New York Mills MN 56567

website: [www.AffinityRealEstate.com](http://www.AffinityRealEstate.com) | email: [info@affinityrealestate.com](mailto:info@affinityrealestate.com) | office: 218-237-3333 | fax:218-237-3377



**\$349,000**

MLS 6753536 Residential  
411 Russ Parta Drive  
New York Mills MN 56567

website: [www.AffinityRealEstate.com](http://www.AffinityRealEstate.com) | email: [info@affinityrealestate.com](mailto:info@affinityrealestate.com) | office: 218-237-3333 | fax:218-237-3377



**\$349,000**

MLS 6753536 Residential  
411 Russ Parta Drive  
New York Mills MN 56567