

MLS 6753696 Land

\$130,000

17.48 Acres

Other

9798 110th Avenue
Sabin MN 56580

Status: Active

Description:

17.48 Acres Just Minutes from the FM Area! Located 4 miles south of Sabin at the corner of Hwy 52 and 110th Ave South, this spacious property offers the perfect spot to build your dream home or farm the land. Enjoy country living with easy access to town. Priced below assessed value—don't miss out on this great opportunity!

Additional Details:

Lot Acres	17.48
Lot Dimensions	Approx 1,962 x 1,545 x 1,202
School District	146
Taxes	\$825
Taxes with Assessments	\$862
Tax Year	2025

Additional Features:

Driving Directions:



Listed By:
REALTY XPERTS

Affinity Real Estate Inc. participates in the Regional Multiple Listing Service of Minnesota, Inc Broker Reciprocity (sm) program, allowing us to display other broker's listings on our website. All properties are subject to prior sale, change or withdrawal.



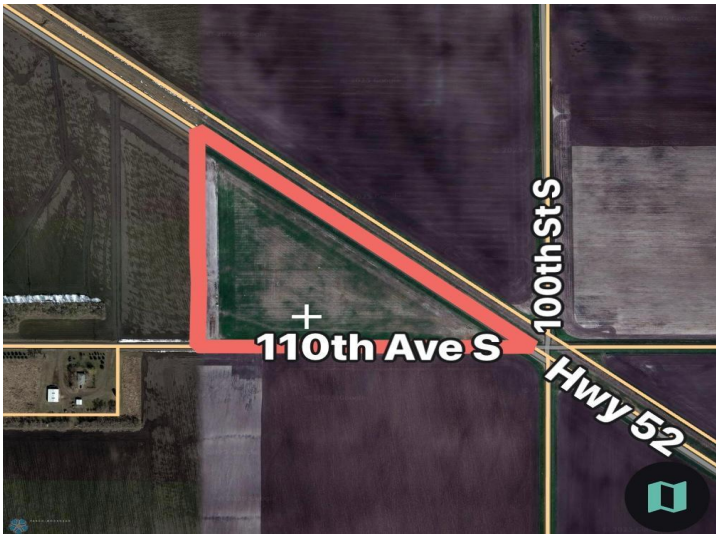
Call Affinity Real Estate

218-237-3333

info@affinityrealestate.com



Affinity Real Estate - 600 Park Avenue South - Park Rapids MN 56470



website: www.AffinityRealEstate.com | email: info@affinityrealestate.com | office: 218-237-3333 | fax: 218-237-3377



\$130,000
MLS 6753696 Land
9798 110th Avenue
Sabin MN 56580