



MLS 6753745 Residential

\$249,900

1,810 sq ft
4 bedrooms
1 baths

4247 Crow Wing Circle
Pillager MN 56473

Status: Active

Description:

This spacious home sits on a private double lot near the end of a cul-de-sac. Built in 2017, it offers a variety of great updates. The impressive kitchen features granite countertops and a generously sized pantry. All four bedrooms are located on the same level, including a master suite with a walk-in closet and a walk-through bathroom. You'll also find both a living room and a family room with built-in shelving, providing plenty of space to relax or entertain. The home is a work-in-progress with fresh paint throughout, new carpet set to be installed soon, and upcoming new concrete sidewalks. A new natural gas furnace will be installed soon. The property also includes several outbuildings: a large quonset for storage, a small shed, and a chicken coop. With plenty of land, there's room to add your dream garage or pole barn. For even more space, you could also purchase the .5 wooded acres across the road, which is listed separately (MLS #6754201), offering an expansive area for a large building project!

Additional Details:

Year Built	2017
Lot Acres	0.92
Lot Dimensions	200x200x200x200
School District	116
Taxes	\$992
Taxes with Assessments	\$1,010
Tax Year	2025

Additional Features:

Basement: None **Fuel:** Natural Gas **Heat:** Forced Air **Sewer:** Mound Septic **Water:** Sand Point **Air Conditioning:** Window Unit(s)

Driving Directions:

From 210 and River Road, go south to Hazel Ave. Right on Hazel. Left on Big Water Drive. Turn right onto Crow Wing Circle SW. (Do not turn on Armour.)



Listed By:
Ashworth Real Estate

Affinity Real Estate Inc. participates in the Regional Multiple Listing Service of Minnesota, Inc Broker Reciprocity (sm) program, allowing us to display other broker's listings on our website. All properties are subject to prior sale, change or withdrawal.



Call Affinity Real Estate

218-237-3333

info@affinityrealestate.com



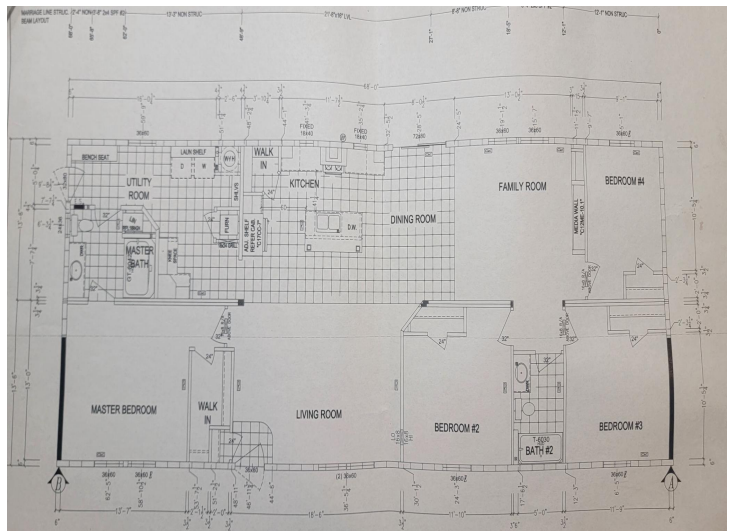
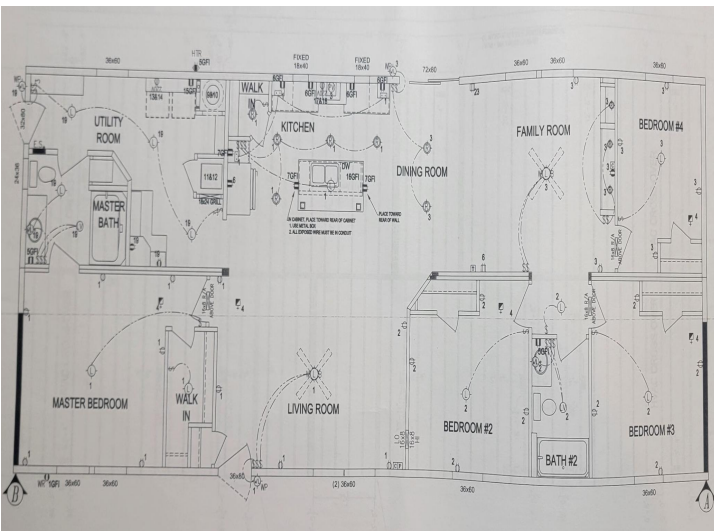
Affinity Real Estate - 600 Park Avenue South - Park Rapids MN 56470



website: www.AffinityRealEstate.com | email: info@affinityrealestate.com | office: 218-237-3333 | fax: 218-237-3377

Affinity
REAL ESTATE INC

\$249,900
MLS 6753745 Residential
4247 Crow Wing Circle
Pillager MN 56473



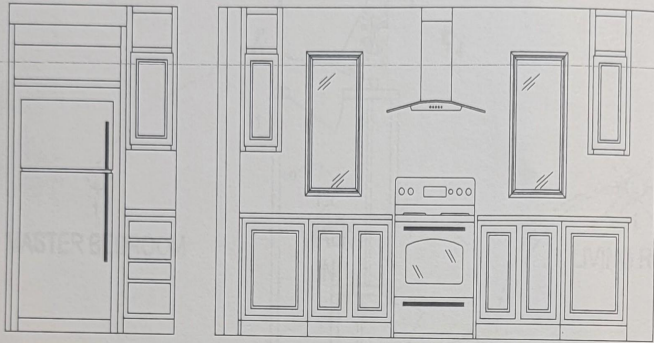
website: www.AffinityRealEstate.com | email: info@affinityrealestate.com | office: 218-237-3333 | fax: 218-237-3377

Affinity
REAL ESTATE INC

\$249,900
MLS 6753745 Residential
4247 Crow Wing Circle
Pillager MN 56473

OUT #3

GRANITE KITCHEN COUNTERTOPS



SERIAL #:	378532		
MODEL #:	6828-9006-1		
DRAWN BY:	MARTINEZJO	DATE:	8/15/16
PG TITLE:	ELECTRICAL LAYOUT		
BUILT FOR:	ISEMAN HOMES, INC.		
ORDER #:	8752		

TITLE: 16-6828-9006-1		CMH MANUFACTURING WEST Crest - Plant 981 437 N. Main Street, Middlebury, IN 46540 PH: 574.825.7500 FAX: 574.825.7569
DRAWN BY:	BM	DATE: 8/12/16
SERIES:	HERITAGE	LAST REVISED: 8/15/16
SCALE:	3/16"=1'	CALC REF:
7/21/2015 7:14 AM		L:102 - Serial Specific/378532.dwg
		SHEET: 378532



website: www.AffinityRealEstate.com | email: info@affinityrealestate.com | office: 218-237-3333 | fax: 218-237-3377



\$249,900
MLS 6753745 Residential
4247 Crow Wing Circle
Pillager MN 56473



website: www.AffinityRealEstate.com | email: info@affinityrealestate.com | office: 218-237-3333 | fax:218-237-3377



\$249,900

MLS 6753745 Residential
4247 Crow Wing Circle
Pillager MN 56473