



MLS 6753772 Lake Home

\$358,500

1,440 sq ft
3 bedrooms
2 baths

1308 Geneva Drive
Alexandria MN 56308

Waterfront: Geneva

Status: Active

Description:

Location is key; this property is central to all, in a tree-lined, picturesque neighborhood. Perfectly updated for modern living. This remodeled multi-level property features new siding (2023), newer windows, and a cement driveway. Inside, the kitchen shines with granite countertops, perfect for cooking enthusiasts. The newer deck offers space for relaxation or entertainment, overlooking a large lot. For those who love the water, enjoy deeded access to a lake lot on Lake Geneva and the Alexandria Chain of Lakes. Benefit from a short waitlist for a boat slip on the shared dock. One of the six dock allocations is set aside for daily boat use. The property also includes a storage shed for extra convenience. Move-in ready and well-maintained, this home provides both comfort and functionality. Ready to explore the possibilities?

Additional Details:

Year Built	1975
Lot Acres	0.5
Lot Dimensions	125, 166, 140, 165
Garage Stalls	2
School District	206
Taxes	\$2,384
Taxes with Assessments	\$2,514
Tax Year	2025

Additional Features:

Basement: Finished, Partial, Walkout, Wood **Fuel:** Electric **Garage:** 2 **Heat:** Boiler, Radiant **Sewer:** City Sewer/Connected **Water:** Well **Air Conditioning:** Ductless Mini-Split

Driving Directions:

From Birch Ave, East on 13th Ave, left on Lakecrest Dr, which will turn into Geneva Dr. The Property will be on your right.



Listed By:
Counselor Realty Inc of Alex

Affinity Real Estate Inc. participates in the Regional Multiple Listing Service of Minnesota, Inc Broker Reciprocity (sm) program, allowing us to display other broker's listings on our website. All properties are subject to prior sale, change or withdrawal.



Call Affinity Real Estate

218-237-3333

info@affinityrealestate.com



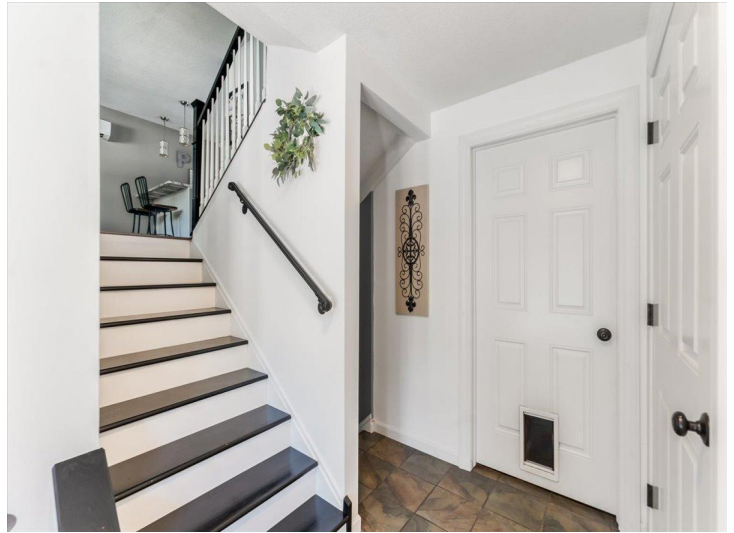
Affinity Real Estate - 600 Park Avenue South - Park Rapids MN 56470



website: www.AffinityRealEstate.com | email: info@affinityrealestate.com | office: 218-237-3333 | fax: 218-237-3377

Affinity
REAL ESTATE INC

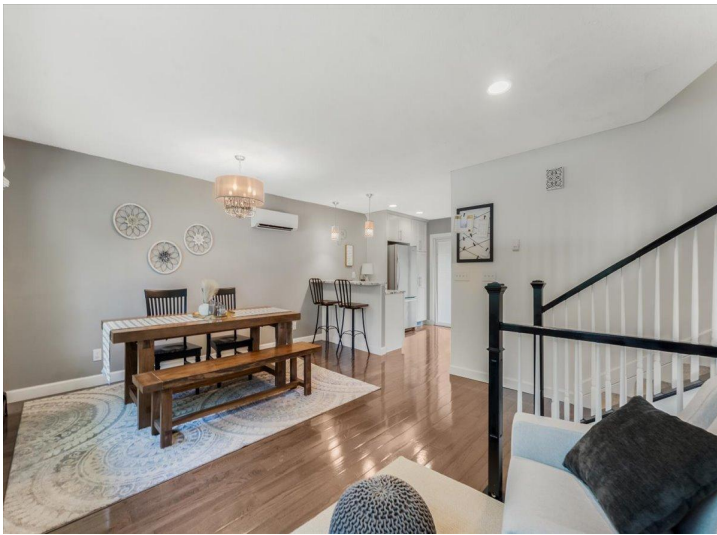
\$358,500
MLS 6753772 Lake Home
1308 Geneva Drive
Alexandria MN 56308



website: www.AffinityRealEstate.com | email: info@affinityrealestate.com | office: 218-237-3333 | fax: 218-237-3377



\$358,500
 MLS 6753772 Lake Home
 1308 Geneva Drive
 Alexandria MN 56308



website: www.AffinityRealEstate.com | email: info@affinityrealestate.com | office: 218-237-3333 | fax: 218-237-3377

Affinity
REAL ESTATE INC

\$358,500
MLS 6753772 Lake Home
1308 Geneva Drive
Alexandria MN 56308



website: www.AffinityRealEstate.com | email: info@affinityrealestate.com | office: 218-237-3333 | fax: 218-237-3377



\$358,500
 MLS 6753772 Lake Home
 1308 Geneva Drive
 Alexandria MN 56308



website: www.AffinityRealEstate.com | email: info@affinityrealestate.com | office: 218-237-3333 | fax: 218-237-3377



\$358,500
 MLS 6753772 Lake Home
 1308 Geneva Drive
 Alexandria MN 56308



website: www.AffinityRealEstate.com | email: info@affinityrealestate.com | office: 218-237-3333 | fax: 218-237-3377

Affinity
REAL ESTATE INC

\$358,500
MLS 6753772 Lake Home
1308 Geneva Drive
Alexandria MN 56308



website: www.AffinityRealEstate.com | email: info@affinityrealestate.com | office: 218-237-3333 | fax: 218-237-3377



\$358,500
 MLS 6753772 Lake Home
 1308 Geneva Drive
 Alexandria MN 56308



website: www.AffinityRealEstate.com | email: info@affinityrealestate.com | office: 218-237-3333 | fax: 218-237-3377



\$358,500
 MLS 6753772 Lake Home
 1308 Geneva Drive
 Alexandria MN 56308



website: www.AffinityRealEstate.com | email: info@affinityrealestate.com | office: 218-237-3333 | fax: 218-237-3377



\$358,500
MLS 6753772 Lake Home
1308 Geneva Drive
Alexandria MN 56308