

MLS 6753782 Land

\$52,900

1.36 Acres

Finished Lot(s)

Lot 43 Block 2 Colonial Court NE
Alexandria MN 56308

Status: Coming Soon

Description:

Home sweet home! These absolutely stunning empty lots offer the ideal mix of natural beauty and modern convenience. Just a quick golf cart ride away is Geneva Golf Club - your own backyard playground - and the mouthwatering cuisine of Geneva Grill. You'll have the freedom to choose your own builder and custom floor plans, all while being minutes from the Central Lakes Trail, charming downtown Alexandria, and the area's beautiful lakes. With natural gas, electricity, city sewer, fiber optic cable, underground utilities, and paved streets already in place, everything is ready for you to bring your dream home to life!

Additional Details:

Lot Acres	1.36
Lot Dimensions	150x207x174x399x157x32
School District	206
Taxes	\$398
Taxes with Assessments	\$398
Tax Year	2025

Additional Features:

Driving Directions:

From downtown, head E on Cty 82, then turn left onto Liberty Road. Geneva Estates East will be on your right. There are two entrances into this estate complex. All lots are marked with stakes.



Listed By:
Realty ONE Group Choice

Affinity Real Estate Inc. participates in the Regional Multiple Listing Service of Minnesota, Inc Broker Reciprocity (sm) program, allowing us to display other broker's listings on our website. All properties are subject to prior sale, change or withdrawal.



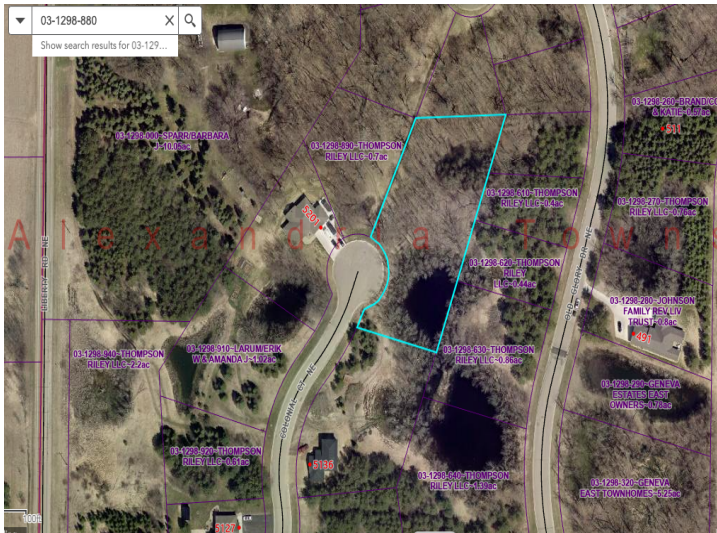
Call Affinity Real Estate

218-237-3333

info@affinityrealestate.com



Affinity Real Estate - 600 Park Avenue South - Park Rapids MN 56470



website: www.AffinityRealEstate.com | email: info@affinityrealestate.com | office: 218-237-3333 | fax: 218-237-3377



\$52,900
 MLS 6753782 Land
 Lot 43 Block 2 Colonial Court
 NE
 Alexandria MN 56308