

MLS 6753806 Land

**\$42,900**

0.61 Acres  
Finished Lot(s)

Lot 47 Block 2 Colonial Court NE  
Alexandria MN 56308

Status: Coming Soon

#### Description:

Home sweet home! These absolutely stunning empty lots offer the ideal mix of natural beauty and modern convenience. Just a quick golf cart ride away is Geneva Golf Club - your own backyard playground - and the mouthwatering cuisine of Geneva Grill. You'll have the freedom to choose your own builder and custom floor plans, all while being minutes from the Central Lakes Trail, charming downtown Alexandria, and the area's beautiful lakes. With natural gas, electricity, city sewer, fiber optic cable, underground utilities, and paved streets already in place, everything is ready for you to bring your dream home to life!

#### Additional Details:

Lot Acres	0.61
Lot Dimensions	105x187x130x212
School District	206
Taxes	\$400
Taxes with Assessments	\$400
Tax Year	2025

#### Additional Features:

#### Driving Directions:

From downtown, head E on Cty 82, then turn left onto Liberty Road. Geneva Estates East will be on your right. There are two entrances into this estate complex. All lots are marked with stakes.



Listed By:  
Realty ONE Group Choice

Affinity Real Estate Inc. participates in the Regional Multiple Listing Service of Minnesota, Inc Broker Reciprocity (sm) program, allowing us to display other broker's listings on our website. All properties are subject to prior sale, change or withdrawal.



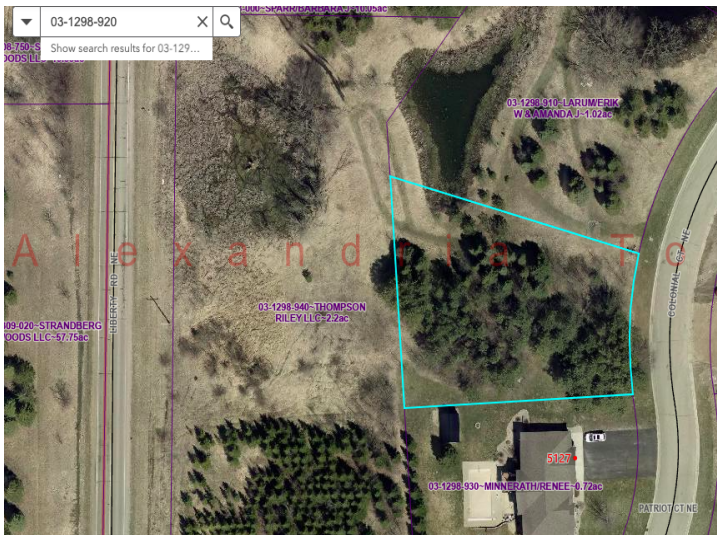
Call Affinity Real Estate

**218-237-3333**

[info@affinityrealestate.com](mailto:info@affinityrealestate.com)



Affinity Real Estate - 600 Park Avenue South - Park Rapids MN 56470



website: [www.AffinityRealEstate.com](http://www.AffinityRealEstate.com) | email: [info@affinityrealestate.com](mailto:info@affinityrealestate.com) | office: 218-237-3333 | fax: 218-237-3377



**\$42,900**  
 MLS 6753806 Land  
 Lot 47 Block 2 Colonial Court  
 NE  
 Alexandria MN 56308