



MLS 6753818 Residential

\$725,000

2,852 sq ft
5 bedrooms
3 baths

42810 County Highway 26
Rochert MN 56578

Status: Active

Description:

This property is an outdoor enthusiast dream! 80 acres of superb wooded hunting land with a mixture of rolling hardwood hills, food plots, small ponds, and a diversity for wildlife. This property also features a log homestead, detached garage, guest cabin, two large outbuildings, and more! Located only 26 miles northeast of Detroit Lakes, and 24 miles northwest of Park Rapids and close to the Tamarac National Wild Life Refuge, Smokey Hills State Forest, and snowmobile trails. Property borders over 600 acres of state land and close to multiple lakes including Shell and Island Lake. Beautiful log homestead with custom oak cabinets, a walkout basement, and large deck area. Paved driveway! Other buildings included: 26x30 double stall detached log garage. 32x72 shed with a 32x48 insulated and heated shop area. 24x28 two bedroom one bath guest cabin with a separate septic system. 2020 built 42x44 steel cold storage building. 12x32 woodshed, 6x7 log outhouse, and a 10x12 storage shed. Lots of wildlife including deer, turkey, bear, grouse and more. This is a heavily wooded property with areas for food plots. This is an excellent hunting property where many mature bucks have been harvested. Seller will consider selling the homestead and land separate. Additional information available!

Additional Details:

Year Built	1977
Lot Acres	80
Lot Dimensions	80 Acres
Garage Stalls	2
School District	23
Taxes	\$3,738
Taxes with Assessments	\$3,738
Tax Year	2025

Additional Features:

Fuel: Electric, Propane, Wood **Heat:** Baseboard, Forced Air, Fireplace(s), Outdoor Boiler

Driving Directions:

From Detroit Lakes, MN go east on state hwy 34 approx. 15.5 miles, turn left and head north on Co hwy 37 (Shell Lake Rd) for 8 miles, turn left and head west on Becker County 26 and go 2 miles to the property. Call Affinity Real Estate for more information.



Directed by:
Counselor Realty Detroit Lakes

Affinity Real Estate Inc. participates in the Regional Multiple Listing Service of Minnesota, Inc Broker Reciprocity (sm) program, allowing us to display other broker's listings on our website. All properties are subject to prior sale, change or withdrawal.



Call Affinity Real Estate

218-237-3333

info@affinityrealestate.com



Affinity Real Estate - 600 Park Avenue South - Park Rapids MN 56470



website: www.AffinityRealEstate.com | email: info@affinityrealestate.com | office: 218-237-3333 | fax: 218-237-3377



\$725,000

MLS 6753818 Residential
42810 County Highway 26
Rochert MN 56578



website: www.AffinityRealEstate.com | email: info@affinityrealestate.com | office: 218-237-3333 | fax: 218-237-3377



\$725,000

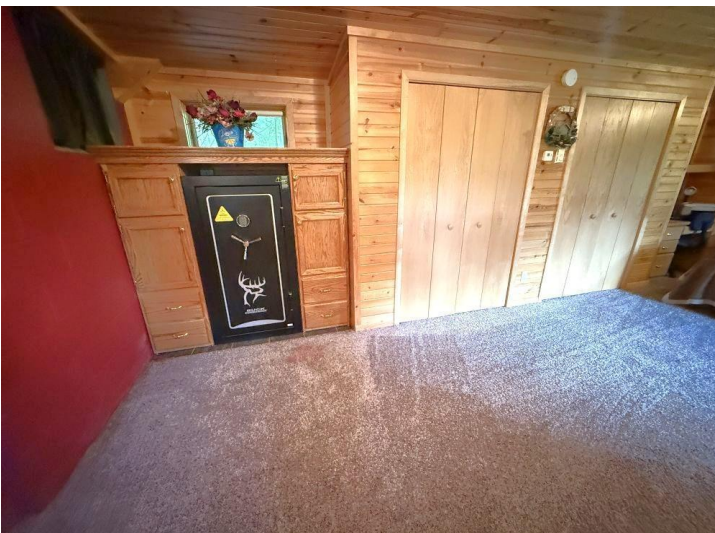
MLS 6753818 Residential
42810 County Highway 26
Rochert MN 56578



website: www.AffinityRealEstate.com | email: info@affinityrealestate.com | office: 218-237-3333 | fax: 218-237-3377



\$725,000
 MLS 6753818 Residential
 42810 County Highway 26
 Rochert MN 56578



website: www.AffinityRealEstate.com | email: info@affinityrealestate.com | office: 218-237-3333 | fax: 218-237-3377

Affinity
REAL ESTATE INC

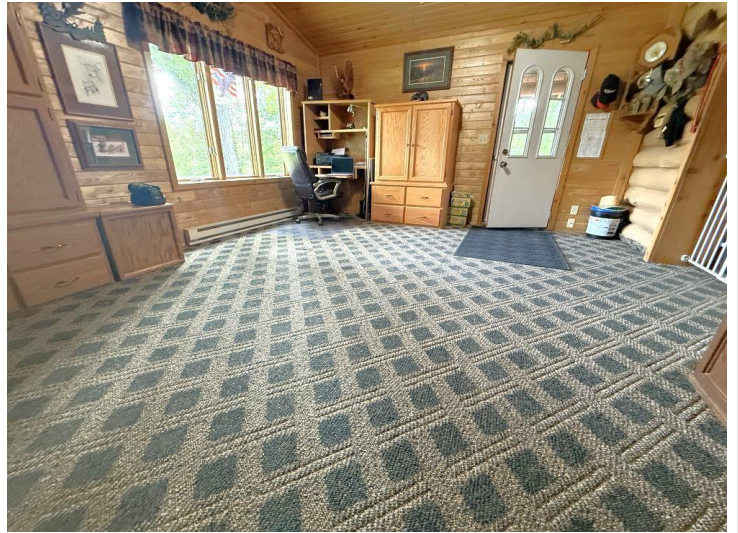
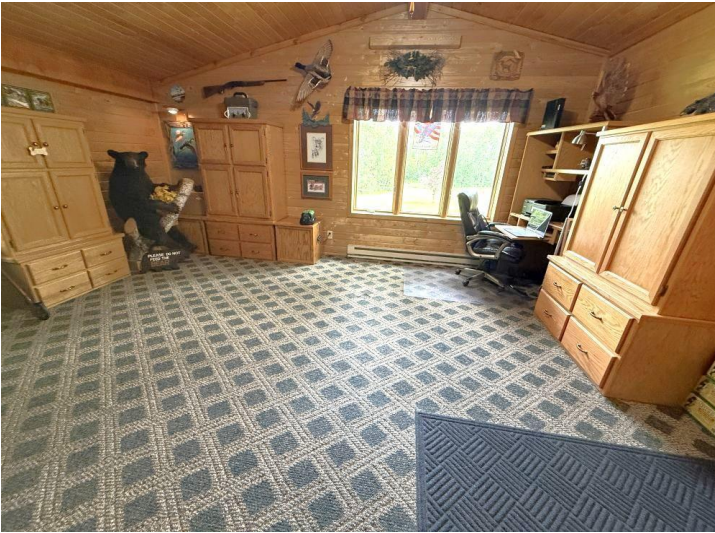
\$725,000
MLS 6753818 Residential
42810 County Highway 26
Rochert MN 56578



website: www.AffinityRealEstate.com | email: info@affinityrealestate.com | office: 218-237-3333 | fax: 218-237-3377

Affinity
REAL ESTATE INC

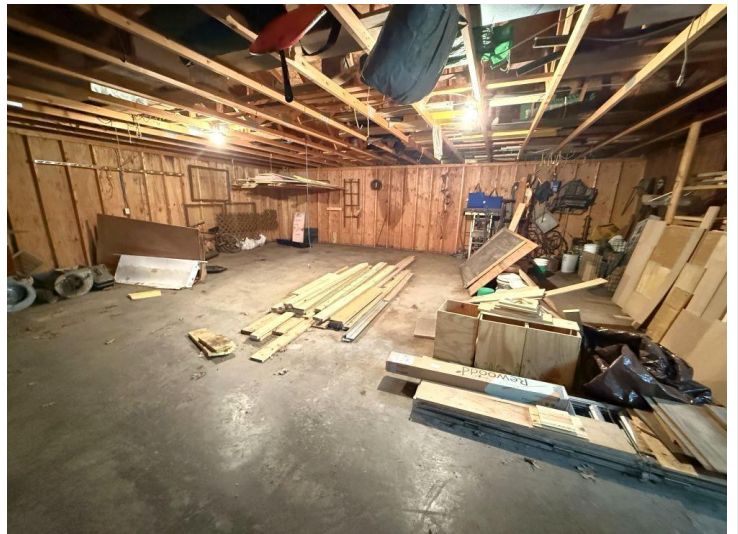
\$725,000
MLS 6753818 Residential
42810 County Highway 26
Rochert MN 56578



website: www.AffinityRealEstate.com | email: info@affinityrealestate.com | office: 218-237-3333 | fax: 218-237-3377



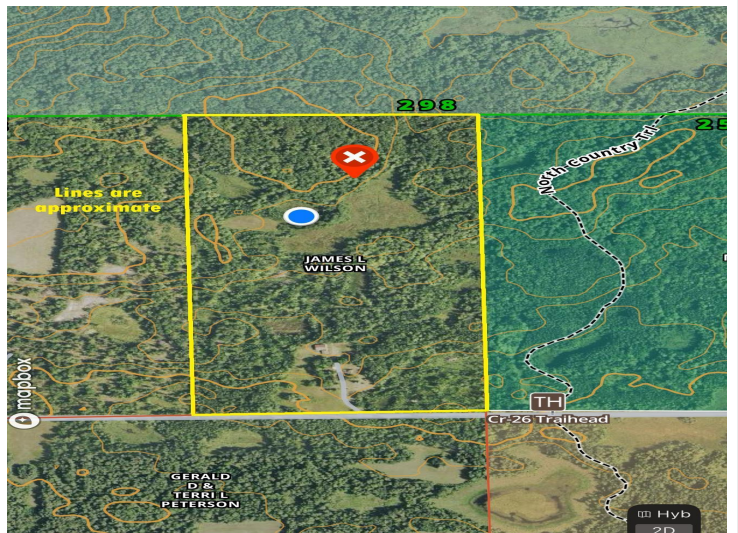
\$725,000
 MLS 6753818 Residential
 42810 County Highway 26
 Rochert MN 56578



website: www.AffinityRealEstate.com | email: info@affinityrealestate.com | office: 218-237-3333 | fax: 218-237-3377



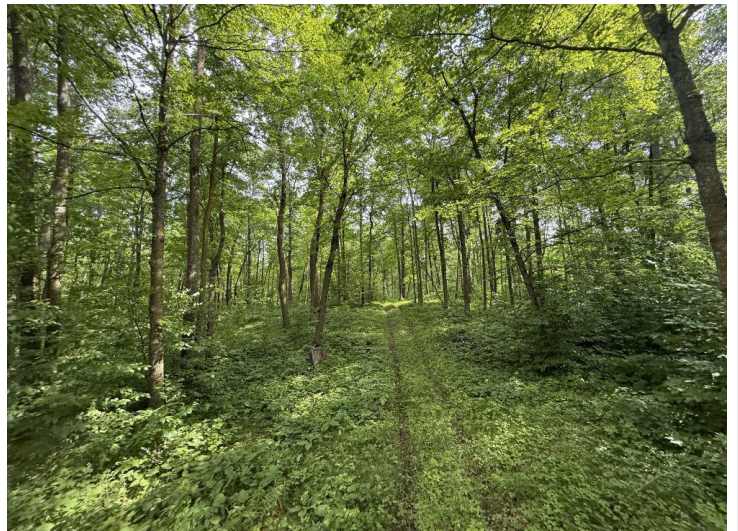
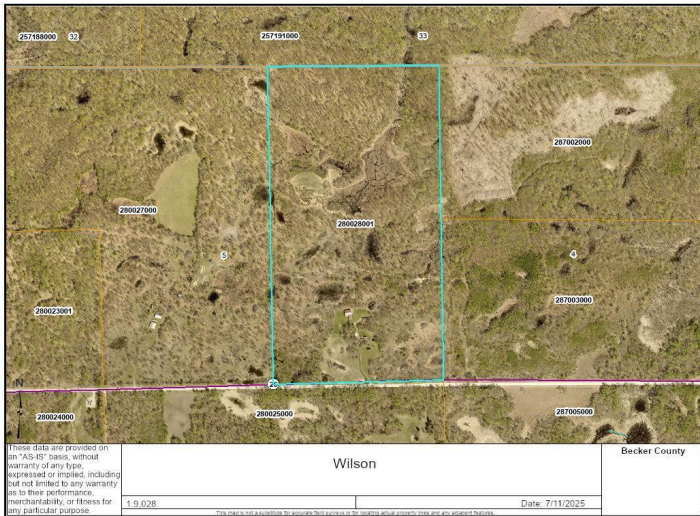
\$725,000
 MLS 6753818 Residential
 42810 County Highway 26
 Rochert MN 56578



website: www.AffinityRealEstate.com | email: info@affinityrealestate.com | office: 218-237-3333 | fax: 218-237-3377

Affinity
REAL ESTATE INC

\$725,000
MLS 6753818 Residential
42810 County Highway 26
Rochert MN 56578



website: www.AffinityRealEstate.com | email: info@affinityrealestate.com | office: 218-237-3333 | fax: 218-237-3377



\$725,000
 MLS 6753818 Residential
 42810 County Highway 26
 Rochert MN 56578



website: www.AffinityRealEstate.com | email: info@affinityrealestate.com | office: 218-237-3333 | fax: 218-237-3377



\$725,000
 MLS 6753818 Residential
 42810 County Highway 26
 Rochert MN 56578



website: www.AffinityRealEstate.com | email: info@affinityrealestate.com | office: 218-237-3333 | fax: 218-237-3377



\$725,000
 MLS 6753818 Residential
 42810 County Highway 26
 Rochert MN 56578



website: www.AffinityRealEstate.com | email: info@affinityrealestate.com | office: 218-237-3333 | fax: 218-237-3377

Affinity
REAL ESTATE INC

\$725,000
MLS 6753818 Residential
42810 County Highway 26
Rochert MN 56578