



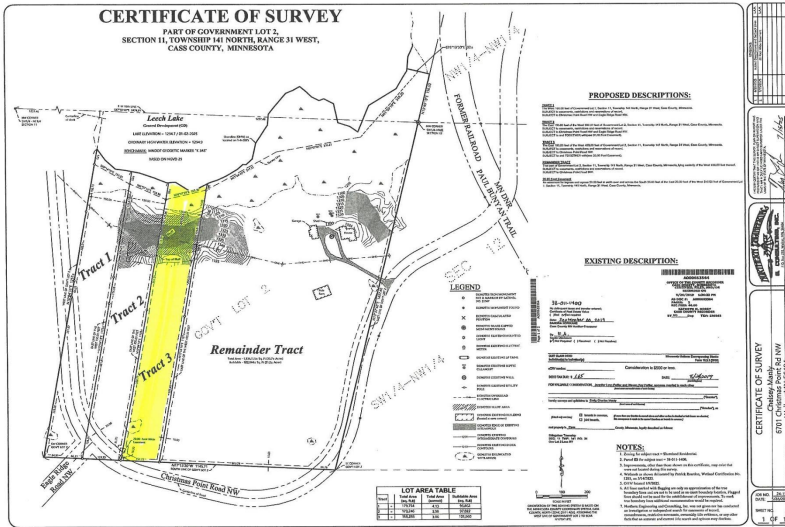
MLS 6753999 Land

\$199,900

3.86 Acres
Raw Land

TBD-3 Christmas Point Road
Walker MN 56484

Status: Active



Description:

Affordable Lakeshore Opportunity on Leech Lake – 163' on Shingobee Bay with 3.86 Acres! Here's your chance to own a piece of paradise on the highly sought-after Shingobee Bay of Leech Lake. This affordable, wooded 3.86-acre lot features 163.30 feet of natural shoreline, offering a peaceful, private setting surrounded by mature trees and the pristine beauty of northern Minnesota. Located just 4 miles from the vibrant lakeside town of Walker, and with all paved roads leading from the property right into town, this location provides the ideal mix of seclusion and accessibility. You're also less than ½ mile (all paved) from the Shingobee Connection Trail to the Paul Bunyan and Heartland State Trails, making it a dream for outdoor enthusiasts with easy access to biking, hiking, and snowmobiling. The property is conveniently located near multiple public access points on Leech Lake, perfect for those who love boating, fishing, and water recreation. Leech Lake is Minnesota's 3rd largest lake, known for its clear waters, scenic shoreline, and exceptional outdoor opportunities. Shingobee Bay offers a peaceful and natural setting—ideal for building your dream home or cabin getaway. And with Walker just minutes away, you'll enjoy great dining, shopping, entertainment, and year-round events without sacrificing the peace and privacy of lake country living. Don't miss this rare opportunity to own on one of Minnesota's most beautiful lakes! (Please have your agent notify the listing agent prior to walking the property. Thanks!)

Additional Details:

Lot Acres	3.86
Lot Dimensions	163x1111x151x1066
School District	693
Taxes	\$2,520
Taxes with Assessments	\$2,586
Tax Year	2025

Additional Features:

Driving Directions:

From Walker, go east on MN-200 for 3
.4 miles and turn right onto Christmas Point Road. In one mile the property will be on the right.



Listed By:
Bill Hansen Realty/Walker

Affinity Real Estate Inc. participates in the Regional Multiple Listing Service of Minnesota, Inc Broker Reciprocity (sm) program, allowing us to display other broker's listings on our website. All properties are subject to prior sale, change or withdrawal.



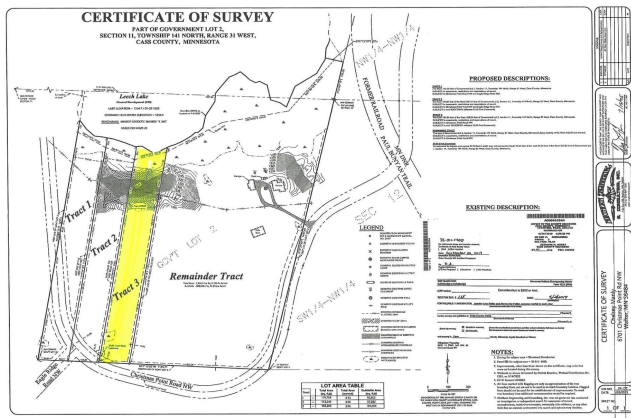
Call Affinity Real Estate

218-237-3333

info@affinityrealestate.com



Affinity Real Estate - 600 Park Avenue South - Park Rapids MN 56470



website: www.AffinityRealEstate.com | email: info@affinityrealestate.com | office: 218-237-3333 | fax: 218-237-3377



\$199,900
MLS 6753999 Land
TBD-3 Christmas Point Road
Walker MN 56484



website: www.AffinityRealEstate.com | email: info@affinityrealestate.com | office: 218-237-3333 | fax: 218-237-3377



\$199,900
 MLS 6753999 Land
 TBD-3 Christmas Point Road
 Walker MN 56484