



MLS 6754138 Land

\$54,800

5 Acres
Raw Land

TBD County 23
Akeley MN 56433

Status: Pending

Description:

5 acres in the heart of lake country. Perfect location to set up base for recreating, hunting or place to build your home. Trail access to the Paul Bunyan State Forest directly across the road which leads you to hundreds of miles of specific ATV, UTV, dirt bike and snowmobile trails. Paul Bunyan State Forest consists of over 100 thousand acres of public land offering cross country skiing, hiking, site seeing, camping, hunting and fishing opportunities. This acreage is high ground with multiple building sites, located on a public maintained road, just min to Akeley and 15 min to either Walker or Nevis.

Additional Details:

Lot Acres	5
Lot Dimensions	330x660x330x660
School District	113
Taxes	\$94
Taxes with Assessments	\$94
Tax Year	2025

Additional Features:

Driving Directions:

From Park Rapids, east on State Hwy 34 to Akeley, just past Akeley take a left onto State Hwy 64 and follow for 1 mile, right turn onto County 23 & follow 2.1 miles to property on right, see sign.



Listed By:
eXp Realty

Affinity Real Estate Inc. participates in the Regional Multiple Listing Service of Minnesota, Inc Broker Reciprocity (sm) program, allowing us to display other broker's listings on our website. All properties are subject to prior sale, change or withdrawal.



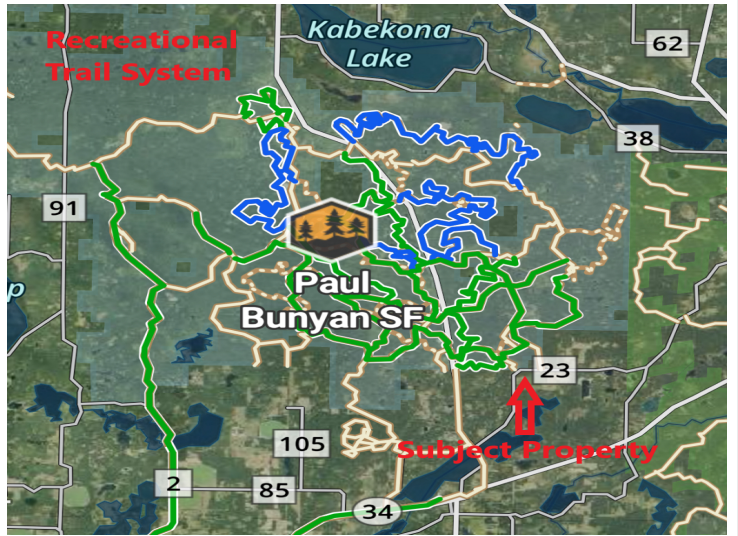
Call Affinity Real Estate

218-237-3333

info@affinityrealestate.com



Affinity Real Estate - 600 Park Avenue South - Park Rapids MN 56470



website: www.AffinityRealEstate.com | email: info@affinityrealestate.com | office: 218-237-3333 | fax: 218-237-3377



\$54,800
 MLS 6754138 Land
 TBD County 23
 Akeley MN 56433



website: www.AffinityRealEstate.com | email: info@affinityrealestate.com | office: 218-237-3333 | fax:218-237-3377



\$54,800
MLS 6754138 Land
TBD County 23
Akeley MN 56433