



MLS 6754196 Land

\$27,000

1.84 Acres
Raw Land

TBD Pawnee
Breezy Point MN 56472

Status: Active



Description:

Breezy Point building site 1.84 acre lot on paved street would be great for a walkout on quiet cul-de-sac road.

Additional Details:

Lot Acres	1.84
Lot Dimensions	235x340
School District	186
Taxes	\$116
Taxes with Assessments	\$116
Tax Year	2024

Additional Features:

Driving Directions:

From County Road 11 and 4 go West on County Road 11 to Ranchette left to Drove right to Pawnee Circle to sign on right.



Listed By:
Edina Realty, Inc.

Affinity Real Estate Inc. participates in the Regional Multiple Listing Service of Minnesota, Inc Broker Reciprocity (sm) program, allowing us to display other broker's listings on our website. All properties are subject to prior sale, change or withdrawal.



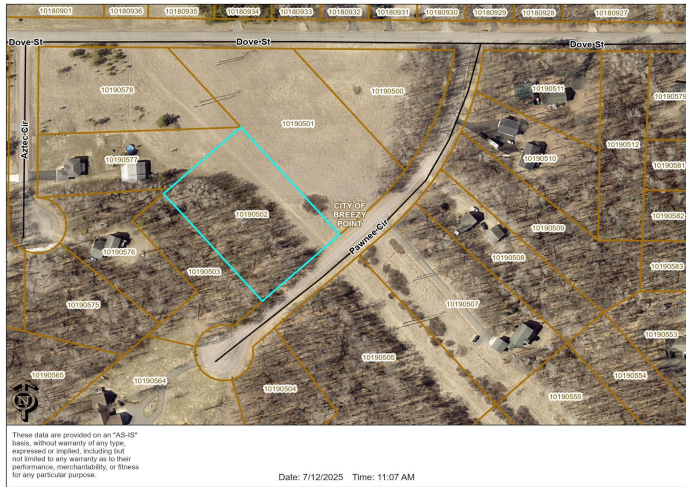
Call Affinity Real Estate

218-237-3333

info@affinityrealestate.com



Affinity Real Estate - 600 Park Avenue South - Park Rapids MN 56470



website: www.AffinityRealEstate.com | email: info@affinityrealestate.com | office: 218-237-3333 | fax: 218-237-3377



\$27,000
 MLS 6754196 Land
 TBD Pawnee
 Breezy Point MN 56472