



MLS 6754336 Land

\$199,900

40.51 Acres
Raw Land

TBD 40th Ave SW
Pine River MN 56474

Status: Active

Description:

Discover the ideal 40-acre wooded parcel suited for the avid hunter or outdoor enthusiast. This exceptional tract is bordered to the east by 161 acres of tax-forfeited land, which connects to an additional 161 acres of Minnesota Department of Forest land, offering an expansive and nearly uninterrupted stretch of wilderness. Nearby active agricultural fields that naturally draw wildlife, this property promises prime hunting opportunities with abundant game throughout the seasons. Conveniently located just a short distance from Hwy 371, it's an excellent option for those seeking a peaceful rural homestead without sacrificing accessibility. Your ultimate hunting retreat to recreational haven awaits!

Additional Details:

Lot Acres	40.51
Lot Dimensions	1322x1333x1319x1332
School District	2174
Taxes	\$552
Taxes with Assessments	\$552
Tax Year	2025

Additional Features:

Driving Directions:

From Hwy 371 head West on 24th St Sw then South onto 40th Ave SW. To the property on the left.



Listed By:
RE/MAX Advantage Plus

Affinity Real Estate Inc. participates in the Regional Multiple Listing Service of Minnesota, Inc Broker Reciprocity (sm) program, allowing us to display other broker's listings on our website. All properties are subject to prior sale, change or withdrawal.



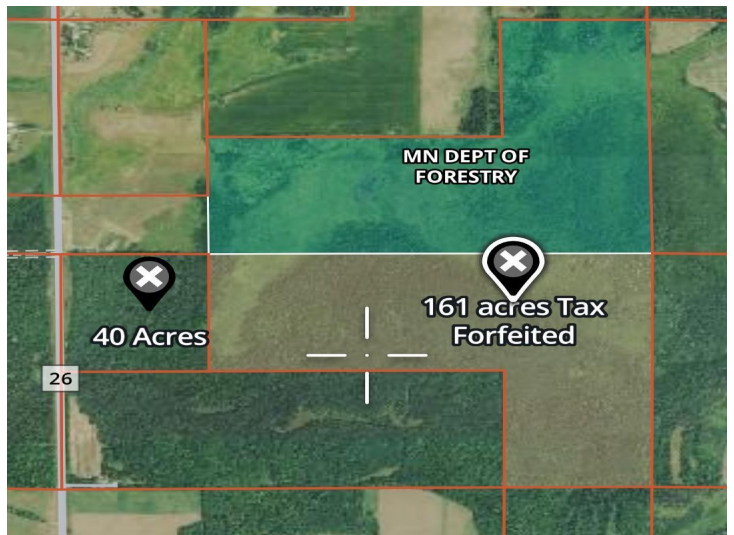
Call Affinity Real Estate

218-237-3333

info@affinityrealestate.com



Affinity Real Estate - 600 Park Avenue South - Park Rapids MN 56470



website: www.AffinityRealEstate.com | email: info@affinityrealestate.com | office: 218-237-3333 | fax: 218-237-3377



\$199,900
MLS 6754336 Land
TBD 40th Ave SW
Pine River MN 56474