



MLS 6754345 Lake Land

\$450,000

Description:

5 Boat Slips on Little Detroit Lake included in this listing. Boat slips have been trading for anywhere from \$50,000 to \$125,000. Prime opportunity to have coveted access to Detroit Lake. Units 6, 7, 8, 9, and 10 are the last remaining units at the Lakeview on Detroit Common Interest Community. Units 6 and 7 are approved for the construction of a duplex and can be 2166 square feet per side. Units 8 and 9 are also approved for construction of a duplex and can be 2166 square feet per side. Unit 10 is approved for a single-family home consisting of a 3109 square foot structure. All 5 units come with a boat slip on Little Detroit Lake and are near all the attractions that make Detroit Lakes one of the most sought-after lake destinations in the area. Association fees cover all insurance, dock installation and removal, yard maintenance, and snow removal for \$150/month. The duplex space could be converted to single family homes if the buyer desires.

Additional Details:

Lot Acres	0.27
Lot Dimensions	Irregular
School District	22
Taxes	\$12,390
Taxes with Assessments	\$12,390
Tax Year	2025

Additional Features:

Driving Directions:

Corner of Co Hwy 6 & West Lake Drive



Listed By:
HomeSmart Adventure Realty

Affinity Real Estate Inc. participates in the Regional Multiple Listing Service of Minnesota, Inc Broker Reciprocity (sm) program, allowing us to display other broker's listings on our website. All properties are subject to prior sale, change or withdrawal.



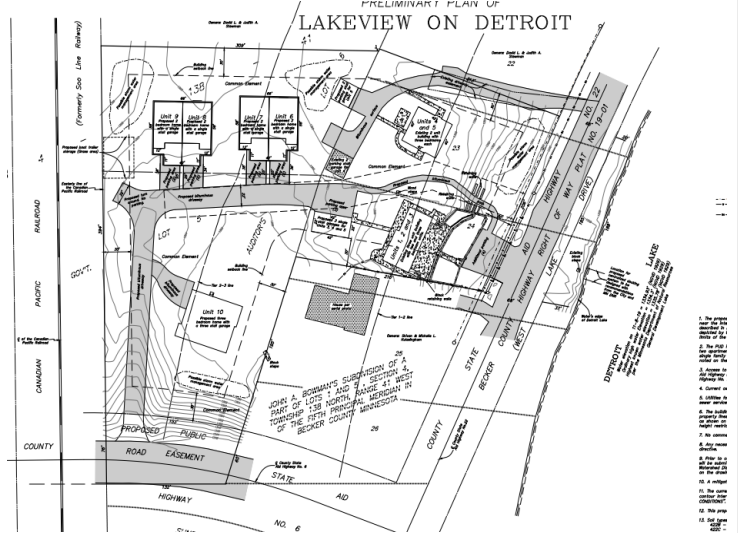
Call Affinity Real Estate

218-237-3333

info@affinityrealestate.com



Affinity Real Estate - 600 Park Avenue South - Park Rapids MN 56470



website: www.AffinityRealEstate.com | email: info@affinityrealestate.com | office: 218-237-3333 | fax: 218-237-3377



\$450,000

MLS 6754345 Lake Land
1380 1382 1384 1386 1388
County Highway 6
Detroit Lakes MN 56501