



MLS 6754551 Lake Home

**\$449,900**

636 sq ft  
2 bedrooms  
1 baths

17328 Paradise Shores Road  
Brainerd MN 56401

Waterfront: Upper South Long

Status: Active

#### Description:

Step into the charm of a bygone era at Paradise Shores, nestled along the tranquil east side of Upper South Long Lake. This enchanting seasonal retreat captures the essence of classic lake cabin living, where simplicity and character abound. The two-bedroom, one-bath cabin showcases vaulted ceilings with exposed trusses, a cozy gas-burning stone fireplace, and brand-new luxury vinyl flooring. Enjoy peaceful mornings on the inviting front porch or relax on the lakeside deck. A rare, functioning boat house with an upper-level deck offers the perfect perch for sunset views, while the level shoreline and sandy beach invite endless lakeside enjoyment. Included is an additional .72-acre back lot, offering potential for future development or expanded privacy. A timeless setting where memories are waiting to be made.

#### Additional Details:

Year Built	1950
Lot Acres	0.99
Lot Dimensions	50x227x60x212
Garage Stalls	2
School District	181
Taxes	\$1,756
Taxes with Assessments	\$1,646
Tax Year	2024

#### Additional Features:

**Basement:** Crawl Space **Fuel:** Electric **Garage:** 2 **Heat:** Fireplace(s) **Sewer:** Tank with Drainage Field **Water:** Sand Point **Air Conditioning:** Wall Unit(s)

#### Driving Directions:

From Brainerd, head east on State Highway 18 to left on 23, to right on Leisure In, to right on Paradise Shores road, to sign on left



Listed By:  
Northland Sotheby's International Realty

Affinity Real Estate Inc. participates in the Regional Multiple Listing Service of Minnesota, Inc Broker Reciprocity (sm) program, allowing us to display other broker's listings on our website. All properties are subject to prior sale, change or withdrawal.



**Call Affinity Real Estate**

**218-237-3333**

**info@affinityrealestate.com**



**Affinity Real Estate - 600 Park Avenue South - Park Rapids MN 56470**





website: [www.AffinityRealEstate.com](http://www.AffinityRealEstate.com) | email: [info@affinityrealestate.com](mailto:info@affinityrealestate.com) | office: 218-237-3333 | fax: 218-237-3377

**Affinity**  
REAL ESTATE INC

**\$449,900**  
MLS 6754551 Lake Home  
17328 Paradise Shores  
Road  
Brainerd MN 56401





website: [www.AffinityRealEstate.com](http://www.AffinityRealEstate.com) | email: [info@affinityrealestate.com](mailto:info@affinityrealestate.com) | office: 218-237-3333 | fax: 218-237-3377

**Affinity**  
REAL ESTATE INC

**\$449,900**  
MLS 6754551 Lake Home  
17328 Paradise Shores  
Road  
Brainerd MN 56401





website: [www.AffinityRealEstate.com](http://www.AffinityRealEstate.com) | email: [info@affinityrealestate.com](mailto:info@affinityrealestate.com) | office: 218-237-3333 | fax: 218-237-3377



**\$449,900**  
 MLS 6754551 Lake Home  
 17328 Paradise Shores  
 Road  
 Brainerd MN 56401





website: [www.AffinityRealEstate.com](http://www.AffinityRealEstate.com) | email: [info@affinityrealestate.com](mailto:info@affinityrealestate.com) | office: 218-237-3333 | fax: 218-237-3377

**Affinity**  
REAL ESTATE INC

**\$449,900**  
MLS 6754551 Lake Home  
17328 Paradise Shores  
Road  
Brainerd MN 56401





website: [www.AffinityRealEstate.com](http://www.AffinityRealEstate.com) | email: [info@affinityrealestate.com](mailto:info@affinityrealestate.com) | office: 218-237-3333 | fax: 218-237-3377

**Affinity**  
REAL ESTATE INC

**\$449,900**  
MLS 6754551 Lake Home  
17328 Paradise Shores  
Road  
Brainerd MN 56401



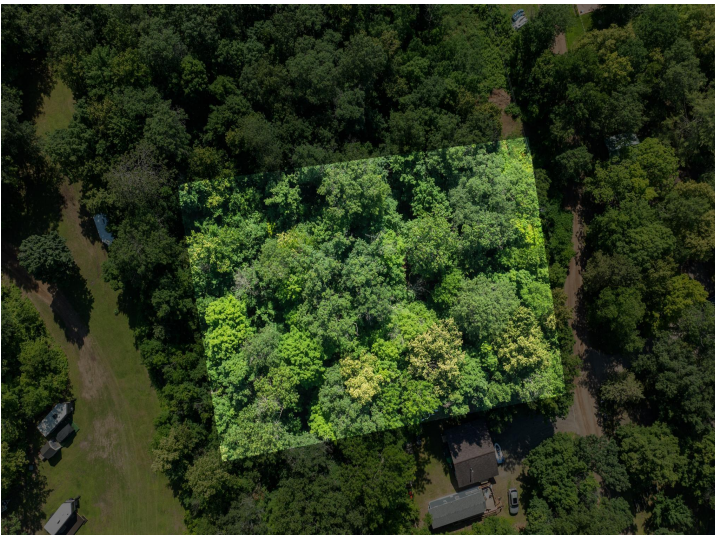
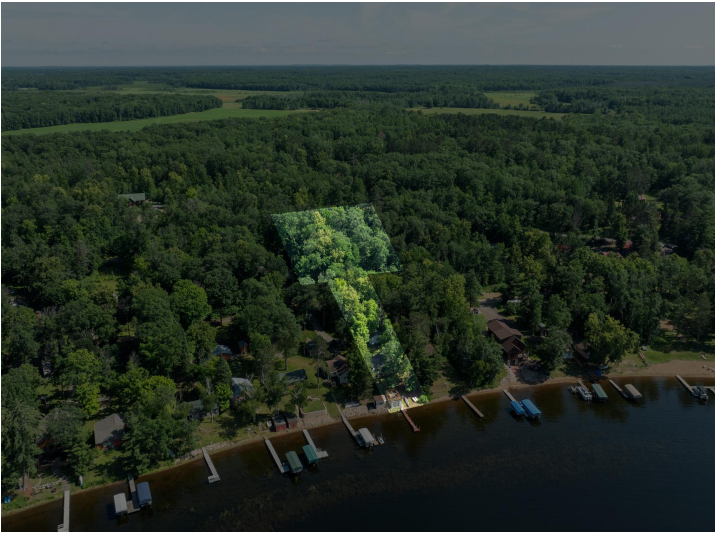


website: [www.AffinityRealEstate.com](http://www.AffinityRealEstate.com) | email: [info@affinityrealestate.com](mailto:info@affinityrealestate.com) | office: 218-237-3333 | fax: 218-237-3377



**\$449,900**  
 MLS 6754551 Lake Home  
 17328 Paradise Shores  
 Road  
 Brainerd MN 56401





website: [www.AffinityRealEstate.com](http://www.AffinityRealEstate.com) | email: [info@affinityrealestate.com](mailto:info@affinityrealestate.com) | office: 218-237-3333 | fax: 218-237-3377



**\$449,900**  
MLS 6754551 Lake Home  
17328 Paradise Shores  
Road  
Brainerd MN 56401