



MLS 6754612 Lake Home

\$625,000

1,923 sq ft
2 bedrooms
3 baths

10199 Sugar Point Drive
Federal Dam MN 56641

Waterfront: Leech

Status: Active

Description:

Welcome to your dream getaway or perfect year-round retreat on the stunning shores of Leech Lake! This beautifully crafted 2025 new construction home offers the ultimate blend of comfort, function, and breathtaking views-ideal for full-time living, a serene retirement, or a high-demand vacation rental investment.

Step inside to an open floor plan with soaring high ceilings, bathed in natural light and designed to capture spectacular sunsets and sweeping lake views. The home features a luxurious primary suite and an additional princess suite-each offering privacy, comfort, and charm.

Enjoy unmatched access to world-class fishing, boating, and relaxation with your private harbor, all nestled next door to the popular Sugar Point Resort. Whether you're looking to unwind or entertain, this home provides everything you need.

Need space for hobbies or storage? You'll love the massive 30x90 pole building perfect for storing boats, ATVs, or creating your dream workshop.

This is more than a home-it's a slice of paradise waiting to be enjoyed year-round or shared with guests as a premier vacation destination.

Additional Details:

Year Built	2025
Lot Acres	1.9
Lot Dimensions	67x876
Garage Stalls	3
School District	118
Taxes	\$1,424
Taxes with Assessments	\$1,424
Tax Year	2025

Additional Features:

Forced Air
Listed By:
Edina Realty, Inc.

Affinity Real Estate Inc. participates in the Regional Multiple Listing Service of Minnesota, Inc Broker Reciprocity (sm) program, allowing us to display other broker's listings on our website. All properties are subject to prior sale, change or withdrawal.



Call Affinity Real Estate

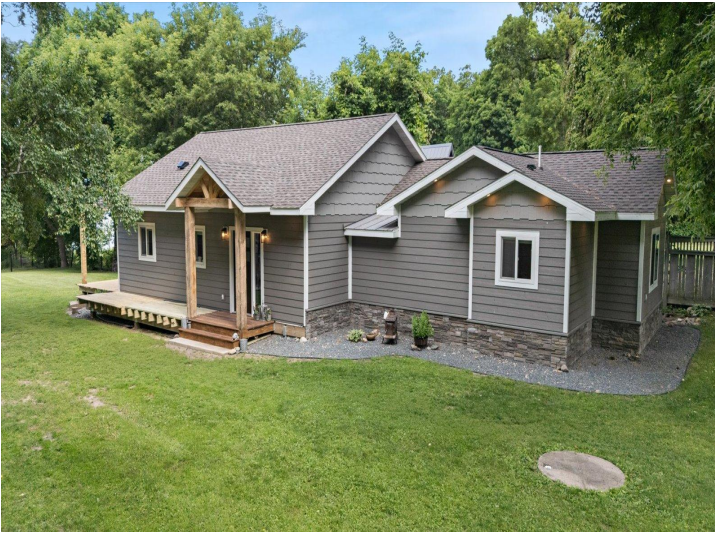
218-237-3333

info@affinityrealestate.com

From Longville north on Hwy 84 cross way 200 go about 9 miles turn left on County 73 go approx. 6 miles to 1 turn left on Sugar Point Dr NW go 4 miles to 10199



Affinity Real Estate - 600 Park Avenue South - Park Rapids MN 56470



website: www.AffinityRealEstate.com | email: info@affinityrealestate.com | office: 218-237-3333 | fax: 218-237-3377



\$625,000
 MLS 6754612 Lake Home
 10199 Sugar Point Drive
 Federal Dam MN 56641



website: www.AffinityRealEstate.com | email: info@affinityrealestate.com | office: 218-237-3333 | fax: 218-237-3377

Affinity
REAL ESTATE INC

\$625,000

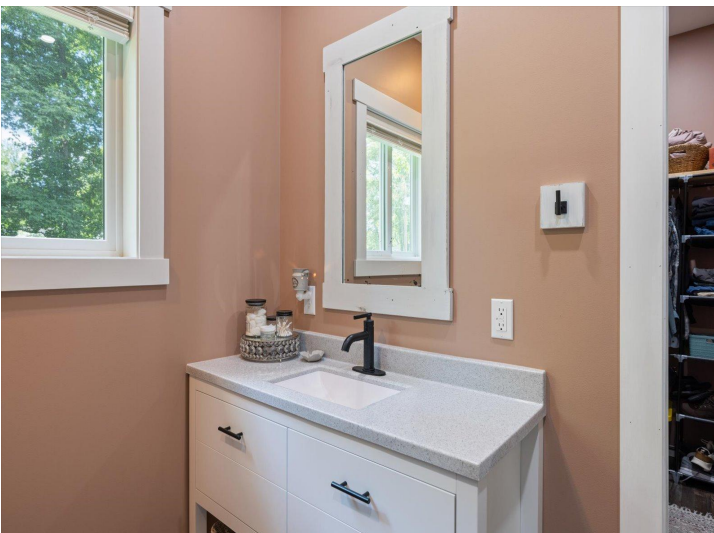
MLS 6754612 Lake Home
10199 Sugar Point Drive
Federal Dam MN 56641



website: www.AffinityRealEstate.com | email: info@affinityrealestate.com | office: 218-237-3333 | fax: 218-237-3377



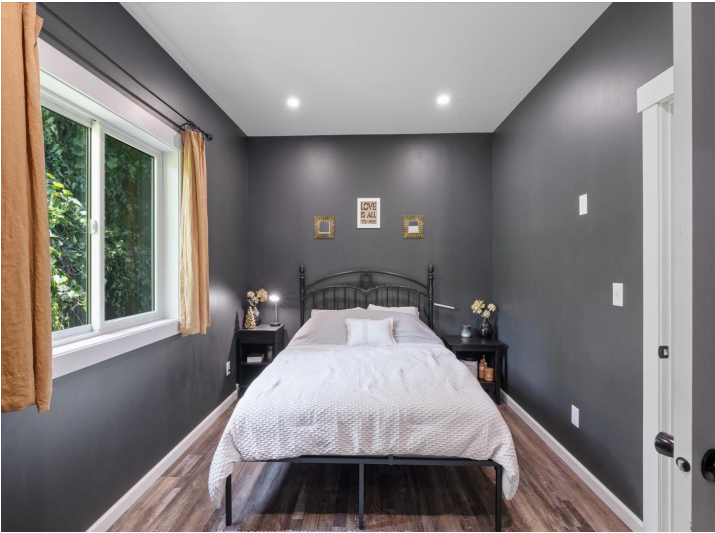
\$625,000
MLS 6754612 Lake Home
10199 Sugar Point Drive
Federal Dam MN 56641



website: www.AffinityRealEstate.com | email: info@affinityrealestate.com | office: 218-237-3333 | fax: 218-237-3377

Affinity
REAL ESTATE INC

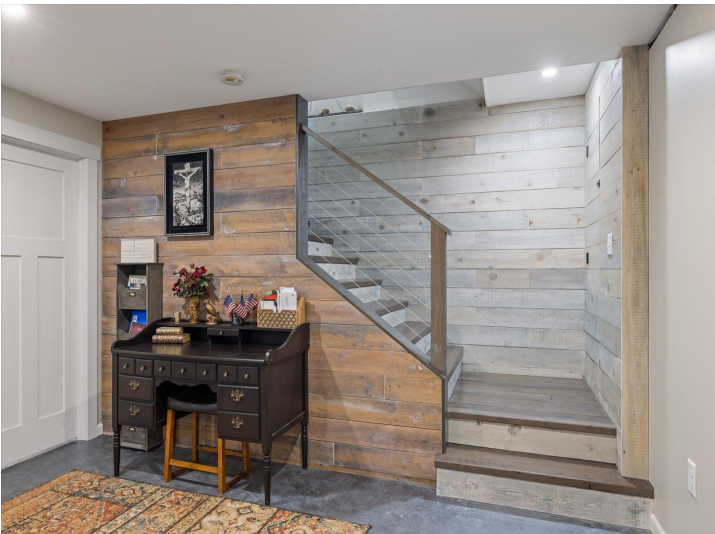
\$625,000
MLS 6754612 Lake Home
10199 Sugar Point Drive
Federal Dam MN 56641



website: www.AffinityRealEstate.com | email: info@affinityrealestate.com | office: 218-237-3333 | fax: 218-237-3377



\$625,000
MLS 6754612 Lake Home
10199 Sugar Point Drive
Federal Dam MN 56641



website: www.AffinityRealEstate.com | email: info@affinityrealestate.com | office: 218-237-3333 | fax: 218-237-3377

Affinity
REAL ESTATE INC

\$625,000
MLS 6754612 Lake Home
10199 Sugar Point Drive
Federal Dam MN 56641



website: www.AffinityRealEstate.com | email: info@affinityrealestate.com | office: 218-237-3333 | fax: 218-237-3377



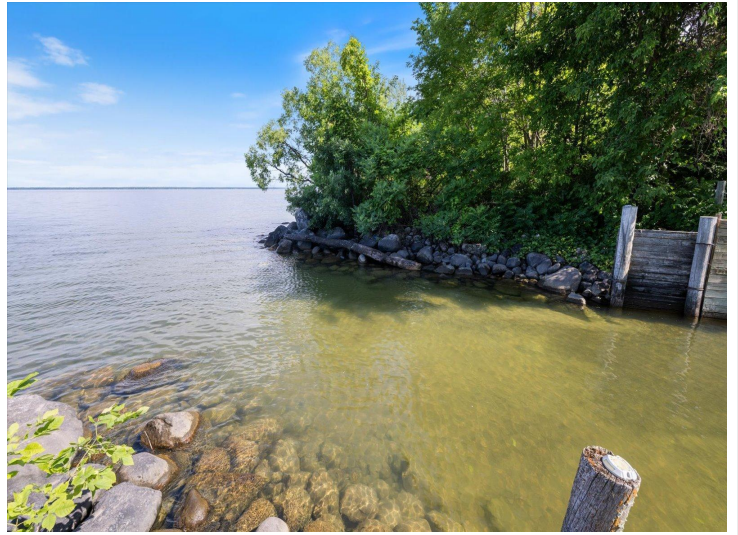
\$625,000
 MLS 6754612 Lake Home
 10199 Sugar Point Drive
 Federal Dam MN 56641



website: www.AffinityRealEstate.com | email: info@affinityrealestate.com | office: 218-237-3333 | fax: 218-237-3377

Affinity
REAL ESTATE INC

\$625,000
MLS 6754612 Lake Home
10199 Sugar Point Drive
Federal Dam MN 56641



website: www.AffinityRealEstate.com | email: info@affinityrealestate.com | office: 218-237-3333 | fax: 218-237-3377



\$625,000

MLS 6754612 Lake Home
10199 Sugar Point Drive
Federal Dam MN 56641



website: www.AffinityRealEstate.com | email: info@affinityrealestate.com | office: 218-237-3333 | fax: 218-237-3377

Affinity
REAL ESTATE INC

\$625,000
MLS 6754612 Lake Home
10199 Sugar Point Drive
Federal Dam MN 56641