



MLS 6754618 Residential

**\$299,900**

1,976 sq ft  
4 bedrooms  
2 baths

25900 Birch Street  
Nisswa MN 56468

Status: Active

#### Description:

This awesome 4 bedroom 2 bath home is in a great location in Nisswa. There is a 2 car insulated & heated garage with plenty of room. The master bedroom has a walk-in shower with a separate tub and a walk-in closet. There is 3 bedrooms on the main floor or can use one of the bedrooms for a office. The lot is private and the end of the road. Nice deck with an motorized awning for your comfort. The lower level has in floor, a family room and a bedroom with an egress window. The lower level has room to grow, add a bathroom and add to the square footage. This property is too good to not take a look!!

#### Additional Details:

Year Built	2001
Lot Acres	0.88
Lot Dimensions	157x182x365x16x5
Garage Stalls	2
School District	181
Taxes	\$1,771
Taxes with Assessments	\$1,796
Tax Year	2025

#### Additional Features:

**Basement:** Block, Egress Window(s), Full, Partially Finished, Storage Space **Fuel:** Electric, Natural Gas **Garage:** 2 **Heat:** Forced Air, Radiant Floor  
**Sewer:** City Sewer/Connected **Water:** Submersible - 4 Inch, Drilled, Well **Air Conditioning:** Central Air

#### Driving Directions:

In Nisswa go North on Church St. to left on Lilac Ln. to the T, go right on Birch St. to sign at the end on the right.



Listed By:  
Kurilla Real Estate LTD

Affinity Real Estate Inc. participates in the Regional Multiple Listing Service of Minnesota, Inc Broker Reciprocity (sm) program, allowing us to display other broker's listings on our website. All properties are subject to prior sale, change or withdrawal.



Call Affinity Real Estate

**218-237-3333**

[info@affinityrealestate.com](mailto:info@affinityrealestate.com)



Affinity Real Estate - 600 Park Avenue South - Park Rapids MN 56470



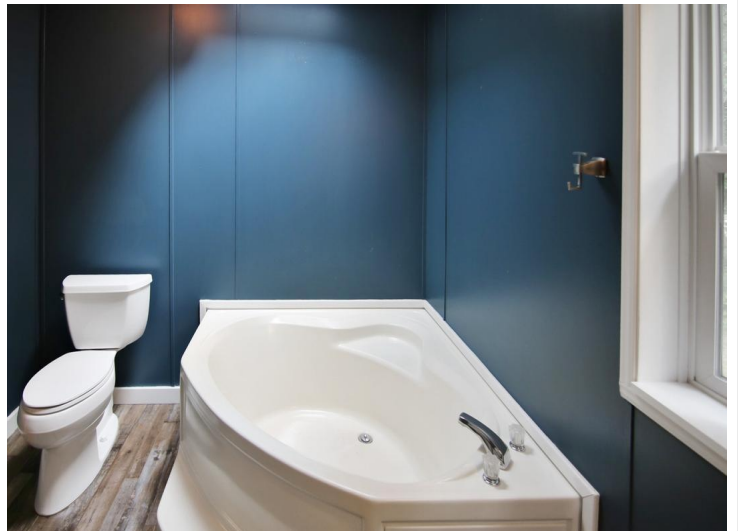


website: [www.AffinityRealEstate.com](http://www.AffinityRealEstate.com) | email: [info@affinityrealestate.com](mailto:info@affinityrealestate.com) | office: 218-237-3333 | fax: 218-237-3377



**\$299,900**  
 MLS 6754618 Residential  
 25900 Birch Street  
 Nisswa MN 56468

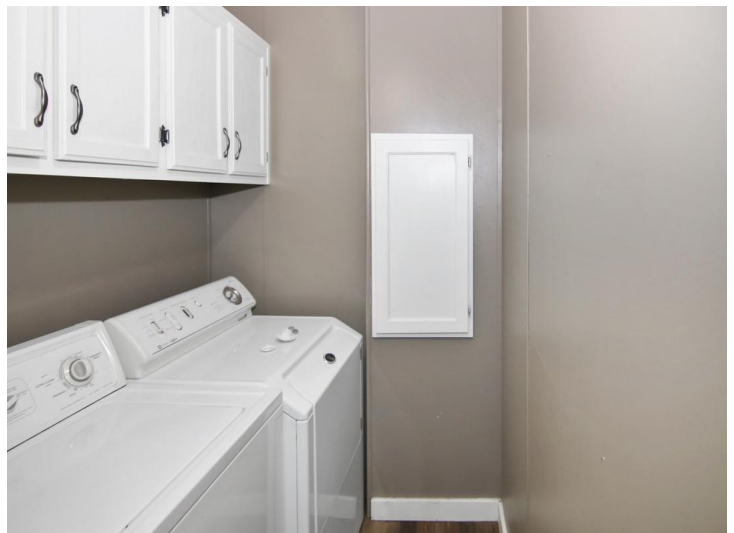




website: [www.AffinityRealEstate.com](http://www.AffinityRealEstate.com) | email: [info@affinityrealestate.com](mailto:info@affinityrealestate.com) | office: 218-237-3333 | fax: 218-237-3377



**\$299,900**  
MLS 6754618 Residential  
25900 Birch Street  
Nisswa MN 56468

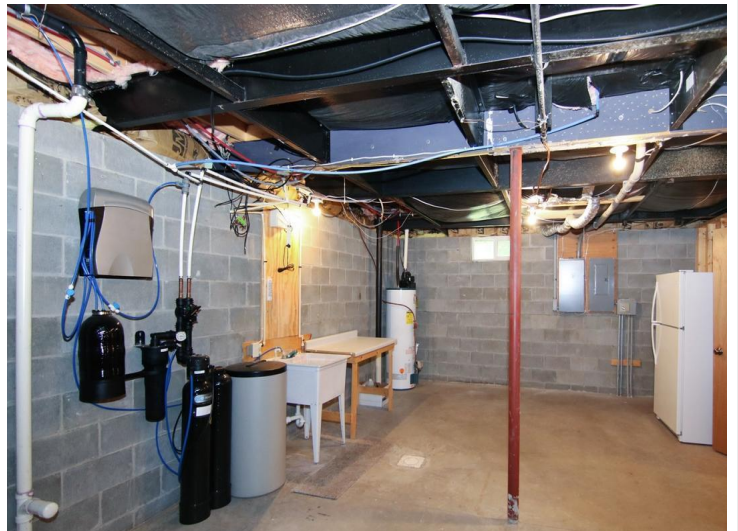


website: [www.AffinityRealEstate.com](http://www.AffinityRealEstate.com) | email: [info@affinityrealestate.com](mailto:info@affinityrealestate.com) | office: 218-237-3333 | fax: 218-237-3377



**\$299,900**  
 MLS 6754618 Residential  
 25900 Birch Street  
 Nisswa MN 56468



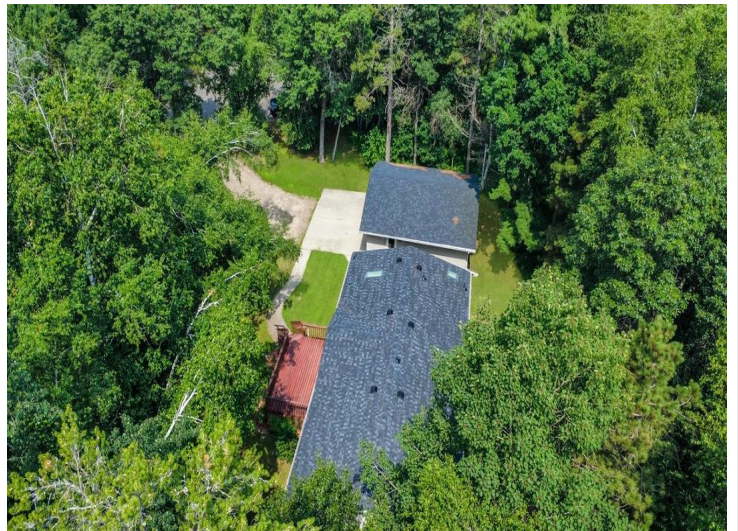


website: [www.AffinityRealEstate.com](http://www.AffinityRealEstate.com) | email: [info@affinityrealestate.com](mailto:info@affinityrealestate.com) | office: 218-237-3333 | fax: 218-237-3377



**\$299,900**  
 MLS 6754618 Residential  
 25900 Birch Street  
 Nisswa MN 56468



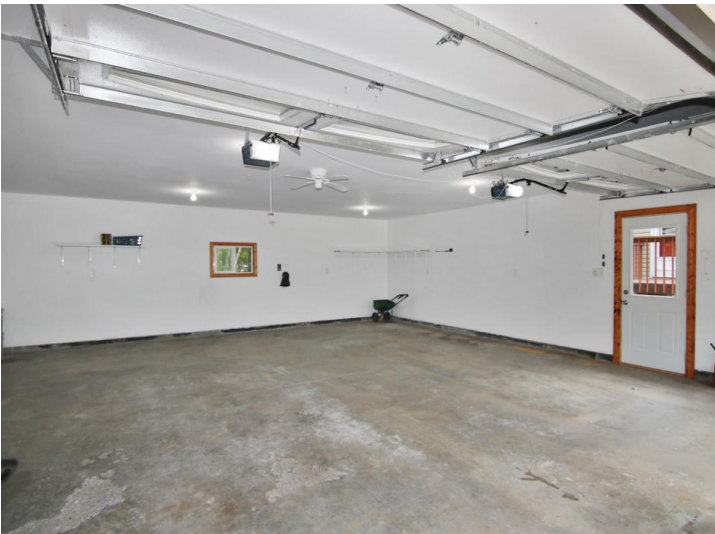


website: [www.AffinityRealEstate.com](http://www.AffinityRealEstate.com) | email: [info@affinityrealestate.com](mailto:info@affinityrealestate.com) | office: 218-237-3333 | fax: 218-237-3377

**Affinity**  
REAL ESTATE INC

**\$299,900**  
MLS 6754618 Residential  
25900 Birch Street  
Nisswa MN 56468





website: [www.AffinityRealEstate.com](http://www.AffinityRealEstate.com) | email: [info@affinityrealestate.com](mailto:info@affinityrealestate.com) | office: 218-237-3333 | fax: 218-237-3377

**Affinity**  
REAL ESTATE INC

**\$299,900**  
MLS 6754618 Residential  
25900 Birch Street  
Nisswa MN 56468





website: [www.AffinityRealEstate.com](http://www.AffinityRealEstate.com) | email: [info@affinityrealestate.com](mailto:info@affinityrealestate.com) | office: 218-237-3333 | fax: 218-237-3377



**\$299,900**  
 MLS 6754618 Residential  
 25900 Birch Street  
 Nisswa MN 56468





website: [www.AffinityRealEstate.com](http://www.AffinityRealEstate.com) | email: [info@affinityrealestate.com](mailto:info@affinityrealestate.com) | office: 218-237-3333 | fax:218-237-3377



**\$299,900**  
MLS 6754618 Residential  
25900 Birch Street  
Nisswa MN 56468