



MLS 6754821 Lake Home

\$799,000

2,290 sq ft
3 bedrooms
5 baths

12908 County Road 8
Brainerd MN 56401

Waterfront: Grave

Status: Active

Description:

HERE IT IS... The highly sought-after and extremely elusive lakeshore with privacy! Tucked among a canopy of mature trees on over 7 acres of land with 540+ feet of lakefrontage sits this beautiful log-sided home, that makes the perfect UP-NORTH GET-A-WAY. The home features an open floor plan with a large kitchen and dining area, two main-floor bedroom en-suites with private baths, a floor-to-ceiling stone fireplace, a loft with a bedroom, flex room, bathroom, and sitting area. A span of lakeside windows and patio doors leads to a covered patio with a lakeside hot tub and perfectly level elevation down to the swimming beach and dock. Additional structures include a 32x32 detached, finished, and heated garage, a 28x24 pole shed with a concrete floor and overhead door, a 16x12 storage shed with a loft, and a vintage log bunkhouse.

Additional Details:

Year Built	2011
Lot Acres	7.5
Lot Dimensions	543x893x206x1104
Garage Stalls	4
School District	181
Taxes	\$5,835
Taxes with Assessments	\$5,860
Tax Year	2025

Additional Features:

Basement: None **Fuel:** Electric, Propane **Garage:** 4 **Heat:** Ductless Mini-Split, Fireplace(s), Hot Water, Radiant Floor, Radiant **Sewer:** Private Sewer, Septic System Compliant - Yes, Tank with Drainage Field **Water:** Submersible - 4 Inch, Drilled, Private, Well **Air Conditioning:** Ductless Mini-Split

Driving Directions:

From Brainerd, East on Hwy 18 to South (right) on Cty Rd 8, to sign and property at #12908



Listed By:
Kurilla Real Estate LTD

Affinity Real Estate Inc. participates in the Regional Multiple Listing Service of Minnesota, Inc Broker Reciprocity (sm) program, allowing us to display other broker's listings on our website. All properties are subject to prior sale, change or withdrawal.



Call Affinity Real Estate

218-237-3333

info@affinityrealestate.com



Affinity Real Estate - 600 Park Avenue South - Park Rapids MN 56470



website: www.AffinityRealEstate.com | email: info@affinityrealestate.com | office: 218-237-3333 | fax: 218-237-3377

Affinity
REAL ESTATE INC

\$799,000
MLS 6754821 Lake Home
12908 County Road 8
Brainerd MN 56401



website: www.AffinityRealEstate.com | email: info@affinityrealestate.com | office: 218-237-3333 | fax: 218-237-3377

Affinity
REAL ESTATE INC

\$799,000
MLS 6754821 Lake Home
12908 County Road 8
Brainerd MN 56401



website: www.AffinityRealEstate.com | email: info@affinityrealestate.com | office: 218-237-3333 | fax: 218-237-3377

Affinity
REAL ESTATE INC

\$799,000
MLS 6754821 Lake Home
12908 County Road 8
Brainerd MN 56401



website: www.AffinityRealEstate.com | email: info@affinityrealestate.com | office: 218-237-3333 | fax: 218-237-3377

Affinity
REAL ESTATE INC

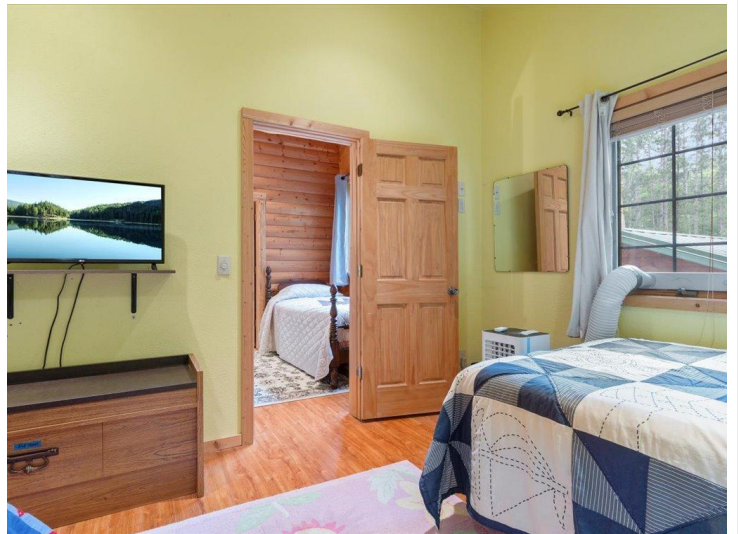
\$799,000
MLS 6754821 Lake Home
12908 County Road 8
Brainerd MN 56401



website: www.AffinityRealEstate.com | email: info@affinityrealestate.com | office: 218-237-3333 | fax: 218-237-3377

Affinity
REAL ESTATE INC

\$799,000
MLS 6754821 Lake Home
12908 County Road 8
Brainerd MN 56401



website: www.AffinityRealEstate.com | email: info@affinityrealestate.com | office: 218-237-3333 | fax: 218-237-3377

Affinity
REAL ESTATE INC

\$799,000
MLS 6754821 Lake Home
12908 County Road 8
Brainerd MN 56401



website: www.AffinityRealEstate.com | email: info@affinityrealestate.com | office: 218-237-3333 | fax: 218-237-3377

Affinity
REAL ESTATE INC

\$799,000
MLS 6754821 Lake Home
12908 County Road 8
Brainerd MN 56401



website: www.AffinityRealEstate.com | email: info@affinityrealestate.com | office: 218-237-3333 | fax:218-237-3377



\$799,000
MLS 6754821 Lake Home
12908 County Road 8
Brainerd MN 56401