



MLS 6754895 Lake Land

\$590,000

Description:

TOWNLINE LAKE / ACREAGE – LIONS AND TIGERS AND BEARS, OH MY! I MEAN BEARS AND WHITETAIL AND TURKEYS AND DUCKS AND FISHING, OH MY! 88 ACRES OF WOODLANDS EMBRACE OVER 3,500' OF SPRAWLING LAKESHORE WITH STRETCHES OF SAND BOTTOM. A 36' X 48' METAL POLE BUILDING WAS BUILT IN 2020 WITH CONCRETE FLOOR FOR ALL OF YOUR OUTDOOR EQUIPMENT STORAGE. 4 MILES OF MOWED TRAILS LEAD TO 5 PERMANENT DEER STANDS (4 RAISED AND 1 GROUND BLIND), 3 PERMANENT DUCK BLINDS, A CENTRALLY LOCATED ¼ ACRE FOOD PLOT, 5 YOUNG APPLE TREES AND ABUNDANT RASPBERRY PATCHES. THIS ONE-OF-A-KIND PROPERTY RARELY SURFACES. DEVELOPMENT POTENTIAL ABOUNDS (LIKE THE WILDLIFE!)

Additional Details:

Lot Acres	88.34
Lot Dimensions	3579x1930x700x1520x2905
School District	118
Taxes	\$2,032
Taxes with Assessments	\$2,032
Tax Year	2025

Additional Features:

Driving Directions:

FROM LONGVILLE GO NORTH ON #84 6 MILES, CROSS HIGHWAY 200 AND CONTINUE NORTH ON COUNTY 8 NE FOR ½ MILE. THERE ARE TWO SEPERATE ENTRANCES TO THE PROPERTY ON THE RIGHT AT #6920 AND DIRECTLY TO THE SOUTH AT THE GATE.



Listed By:
Heartland Real Estate

Affinity Real Estate Inc. participates in the Regional Multiple Listing Service of Minnesota, Inc Broker Reciprocity (sm) program, allowing us to display other broker's listings on our website. All properties are subject to prior sale, change or withdrawal.



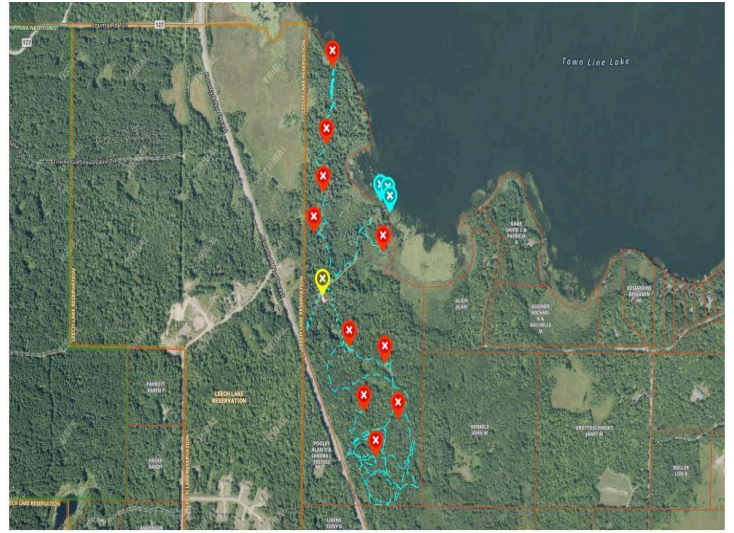
Call Affinity Real Estate

218-237-3333

info@affinityrealestate.com



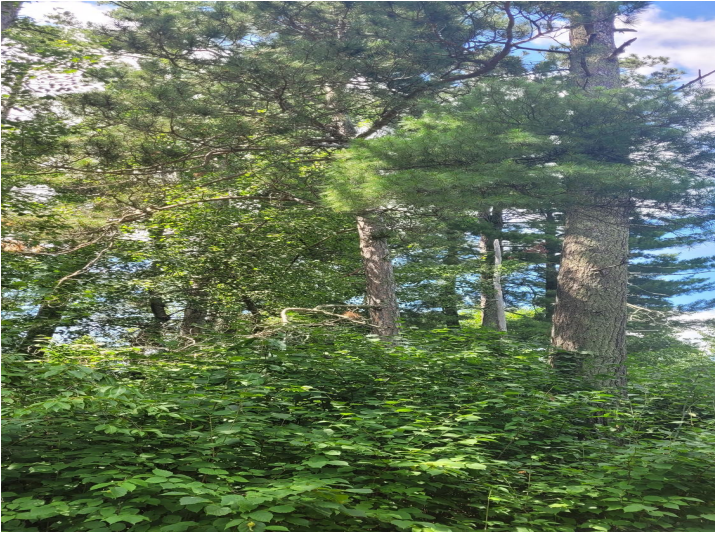
Affinity Real Estate - 600 Park Avenue South - Park Rapids MN 56470



website: www.AffinityRealEstate.com | email: info@affinityrealestate.com | office: 218-237-3333 | fax: 218-237-3377



\$590,000
 MLS 6754895 Lake Land
 6920 County Road 8
 Longville MN 56655



website: www.AffinityRealEstate.com | email: info@affinityrealestate.com | office: 218-237-3333 | fax: 218-237-3377



\$590,000
 MLS 6754895 Lake Land
 6920 County Road 8
 Longville MN 56655



website: www.AffinityRealEstate.com | email: info@affinityrealestate.com | office: 218-237-3333 | fax: 218-237-3377



\$590,000
MLS 6754895 Lake Land
6920 County Road 8
Longville MN 56655

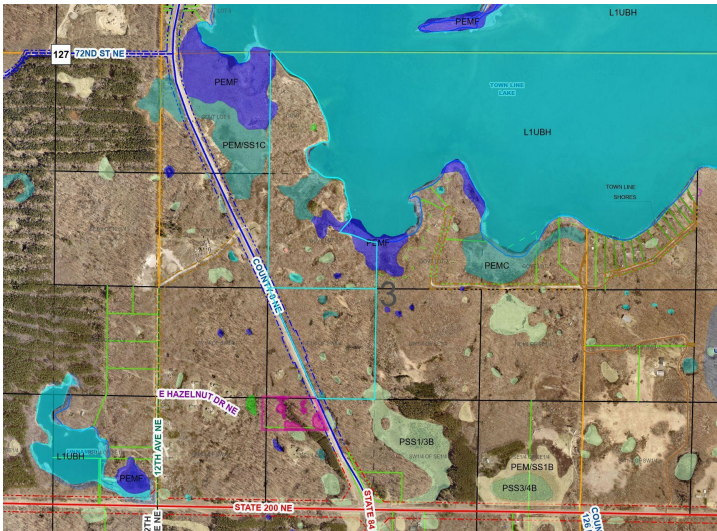


website: www.AffinityRealEstate.com | email: info@affinityrealestate.com | office: 218-237-3333 | fax: 218-237-3377

Affinity
REAL ESTATE INC

\$590,000

MLS 6754895 Lake Land
6920 County Road 8
Longville MN 56655



website: www.AffinityRealEstate.com | email: info@affinityrealestate.com | office: 218-237-3333 | fax: 218-237-3377



\$590,000
 MLS 6754895 Lake Land
 6920 County Road 8
 Longville MN 56655