



MLS 6754942 Commercial

\$425,000

614 Railroad Street
Bemidji MN 56601

Status: Active

Description:

Prime Commercial Building with Modern Updates

Discover a versatile 5,760 sq ft commercial building in a great location with excellent visibility and easy access. This fully updated property offers exceptional functionality for a variety of business needs. Features include a large shop area with a mezzanine for additional storage, garage space with a loading dock, and a fenced, gated exterior area complete with covered storage. Inside, you'll find a spacious conference room, five private offices, and plenty of room to support your operations. Whether you're looking for office, warehouse, or mixed-use space, this property delivers the perfect blend of convenience, security, and modern updates.

Additional Details:

Year Built	1958
Lot Acres	0.5
Lot Dimensions	195x240x125x88
Garage Stalls	2
School District	31
Taxes	\$3,727
Taxes with Assessments	\$3,727
Tax Year	2025

Additional Features:

Basement: None **Fuel:** Natural Gas **Garage:** 2 **Heat:** Forced Air **Sewer:** Private Sewer **Water:** Private **Air Conditioning:** Central Air

Driving Directions:

Paul Bunyan Drive S to Roosevelt Rd take a right to Railroad and take a left, property on right hand side of the road.



Listed By:
Grimes Realty

Affinity Real Estate Inc. participates in the Regional Multiple Listing Service of Minnesota, Inc Broker Reciprocity (sm) program, allowing us to display other broker's listings on our website. All properties are subject to prior sale, change or withdrawal.



Call Affinity Real Estate

218-237-3333

info@affinityrealestate.com



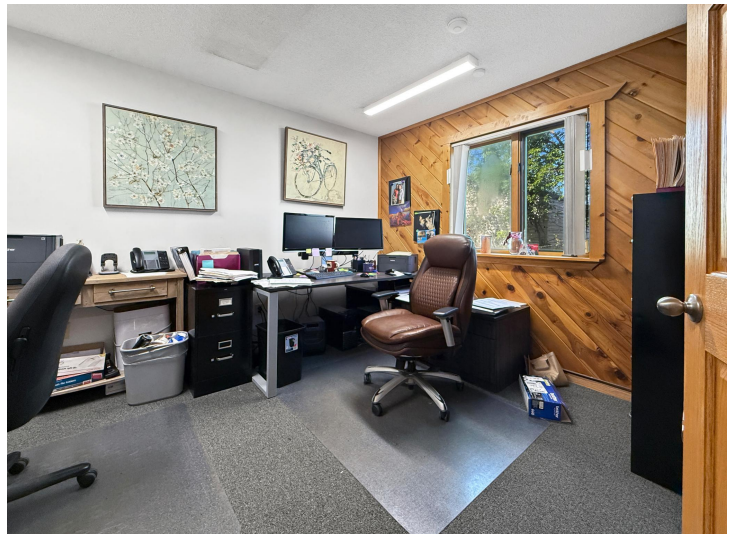
Affinity Real Estate - 600 Park Avenue South - Park Rapids MN 56470



website: www.AffinityRealEstate.com | email: info@affinityrealestate.com | office: 218-237-3333 | fax: 218-237-3377



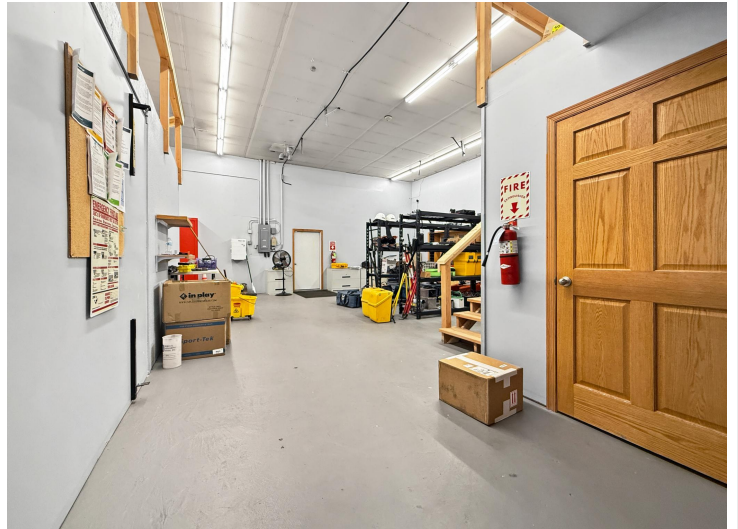
\$425,000
 MLS 6754942 Commercial
 614 Railroad Street
 Bemidji MN 56601



website: www.AffinityRealEstate.com | email: info@affinityrealestate.com | office: 218-237-3333 | fax: 218-237-3377



\$425,000
MLS 6754942 Commercial
614 Railroad Street
Bemidji MN 56601



website: www.AffinityRealEstate.com | email: info@affinityrealestate.com | office: 218-237-3333 | fax: 218-237-3377



\$425,000
MLS 6754942 Commercial
614 Railroad Street
Bemidji MN 56601



website: www.AffinityRealEstate.com | email: info@affinityrealestate.com | office: 218-237-3333 | fax: 218-237-3377



\$425,000
 MLS 6754942 Commercial
 614 Railroad Street
 Bemidji MN 56601



website: www.AffinityRealEstate.com | email: info@affinityrealestate.com | office: 218-237-3333 | fax: 218-237-3377



\$425,000
 MLS 6754942 Commercial
 614 Railroad Street
 Bemidji MN 56601