



MLS 6754989 Residential

\$829,900

4,762 sq ft
4 bedrooms
4 baths

15153 Welton Road
Brainerd MN 56425

Status: Active

Description:

Discover this captivating 4-bedroom, 3.5-bathroom executive home, perfectly nestled on a secluded, beautifully landscaped lot filled with vibrant flowers and lush greenery. This turn-key property comes furnished, making it move-in ready with comfort and style. Step inside to find a stunning floor-to-ceiling fireplace, a chef's kitchen complete with double ovens, rich walnut cabinets offering abundant storage, granite countertops, a spacious walk-in pantry, and stainless steel appliances. The luxurious primary suite features custom built-ins and French doors leading to a spa-like ensuite with double vanities, two walk-in closets, a jacuzzi tub, and a walk-in tiled shower. A large entryway from the garage provides practical built-in storage and a dedicated laundry room for added ease. Upstairs, enjoy a versatile loft space overlooking the main living area, a large family room, an additional bedroom with generous storage, and a full bathroom. For those who love to unwind outdoors, the three-season porch with stamped concrete is the perfect retreat to enjoy peaceful evenings surrounded by nature. With space, privacy, and thoughtful design throughout, this exceptional home is a rare find.

Additional Details:

Year Built	2015
Lot Acres	2.08
Lot Dimensions	370x363x279x198
Garage Stalls	3
School District	181
Taxes	\$3,953
Taxes with Assessments	\$3,978
Tax Year	2025

Additional Features:

Basement: None **Fuel:** Natural Gas **Garage:** 3 **Heat:** Boiler, Forced Air, Fireplace(s), Radiant Floor **Sewer:** Private Sewer, Septic System
Compliant - Yes **Water:** Submersible - 4 Inch, Drilled, Well **Air Conditioning:** Central Air

Driving Directions:

15153 Welton Rd Brainerd MN



Listed By:
RE/MAX Central MN

Affinity Real Estate Inc. participates in the Regional Multiple Listing Service of Minnesota, Inc Broker Reciprocity (sm) program, allowing us to display other broker's listings on our website. All properties are subject to prior sale, change or withdrawal.



Call Affinity Real Estate

218-237-3333

info@affinityrealestate.com



Affinity Real Estate - 600 Park Avenue South - Park Rapids MN 56470



website: www.AffinityRealEstate.com | email: info@affinityrealestate.com | office: 218-237-3333 | fax: 218-237-3377

Affinity
REAL ESTATE INC

\$829,900
MLS 6754989 Residential
15153 Welton Road
Brainerd MN 56425



website: www.AffinityRealEstate.com | email: info@affinityrealestate.com | office: 218-237-3333 | fax: 218-237-3377

Affinity
REAL ESTATE INC

\$829,900
MLS 6754989 Residential
15153 Welton Road
Brainerd MN 56425



website: www.AffinityRealEstate.com | email: info@affinityrealestate.com | office: 218-237-3333 | fax: 218-237-3377

Affinity
REAL ESTATE INC

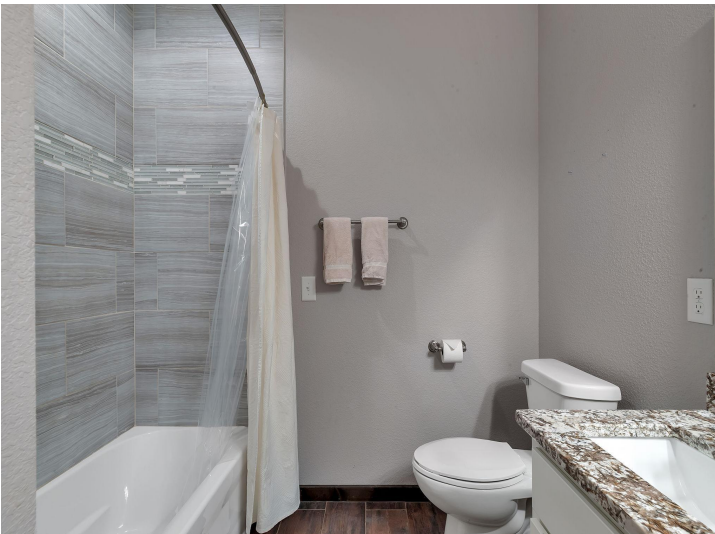
\$829,900
MLS 6754989 Residential
15153 Welton Road
Brainerd MN 56425



website: www.AffinityRealEstate.com | email: info@affinityrealestate.com | office: 218-237-3333 | fax: 218-237-3377



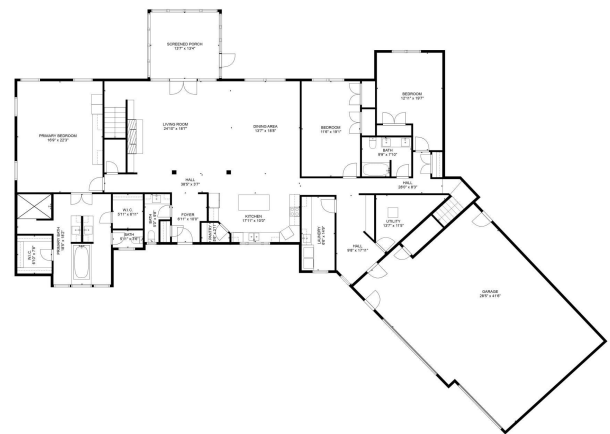
\$829,900
MLS 6754989 Residential
15153 Welton Road
Brainerd MN 56425



website: www.AffinityRealEstate.com | email: info@affinityrealestate.com | office: 218-237-3333 | fax: 218-237-3377



\$829,900
MLS 6754989 Residential
15153 Welton Road
Brainerd MN 56425

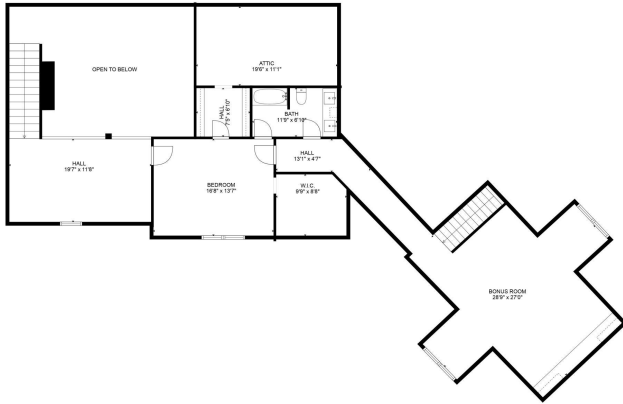


TOTAL: 4334 sq. ft.
 FLOOR 1: 2964 sq. ft. FLOOR 2: 1370 sq. ft.
 EXCLUDED AREAS: GARAGE: 1589 sq. ft. SCREENED PORCH: 181 sq. ft. UTILITY: 93 sq. ft.
 LOW CEILING: 212 sq. ft. OPEN TO BELOW: 408 sq. ft.
 WALLS: 359 sq. ft.
 SIZES AND CONDIMENS ARE APPROXIMATE, ACTUAL MAY VARY

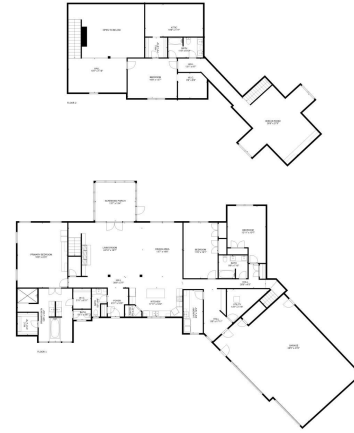
website: www.AffinityRealEstate.com | email: info@affinityrealestate.com | office: 218-237-3333 | fax: 218-237-3377

Affinity
 REAL ESTATE INC

\$829,900
 MLS 6754989 Residential
 15153 Welton Road
 Brainerd MN 56425



TOTAL: 4334 sq. ft.
 FLOOR 1: 2964 sq. ft. FLOOR 2: 1370 sq. ft.
 EXCLUDED AREAS: GARAGE: 1589 sq. ft. SCREENED PORCH: 181 sq. ft. UTILITY: 93 sq. ft.
 LOW CEILING: 212 sq. ft. OPEN TO BELOW: 408 sq. ft.
 WALLS: 359 sq. ft.
 SIZES AND DIMENSIONS ARE APPROXIMATE, ACTUAL MAY VARY.



TOTAL: 4334 sq. ft.
 FLOOR 1: 2964 sq. ft. FLOOR 2: 1370 sq. ft.
 EXCLUDED AREAS: GARAGE: 1589 sq. ft. SCREENED PORCH: 181 sq. ft. UTILITY: 93 sq. ft.
 LOW CEILING: 212 sq. ft. OPEN TO BELOW: 408 sq. ft.
 WALLS: 359 sq. ft.
 SIZES AND DIMENSIONS ARE APPROXIMATE, ACTUAL MAY VARY.

website: www.AffinityRealEstate.com | email: info@affinityrealestate.com | office: 218-237-3333 | fax: 218-237-3377



\$829,900
 MLS 6754989 Residential
 15153 Welton Road
 Brainerd MN 56425