



MLS 6755031 Residential

\$248,900

1,609 sq ft
4 bedrooms
2 baths

502 G Street
Brainerd MN 56401

Status: Pending

Description:

Welcome to this Brainerd must see home offering 4 bedrooms, 2 full bathrooms and over 1600 finished square feet. With an array of updates and thoughtful design, this property is perfect for families, multi-generational living, or those seeking an additional income stream as the upper level offers a 2nd kitchen area and separate access if needed. Currently used as a single-family home with full functionality and potential to use space as needed. Step outside to discover your private outdoor oasis. The corner lot provides plenty of space for outdoor activities and gatherings. The highlight of the backyard is the beautifully designed paver patio, complete with a built-in fireplace. For those with hobbies or needing extra storage, the 2+ detached garage with in-floor heat and wall unit AC that offers ample space for vehicles, tools, and recreational equipment.

Additional Details:

Year Built	1985
Lot Acres	0.17
Lot Dimensions	See GIS
Garage Stalls	3
School District	181
Taxes	\$2,423
Taxes with Assessments	\$2,448
Tax Year	2025

Additional Features:

Basement: Full, Storage Space, Unfinished **Fuel:** Natural Gas **Garage:** 3 **Heat:** Forced Air **Sewer:** City Sewer - In Street **Water:** City Water - In Street **Air Conditioning:** Central Air

Driving Directions:

Take 210/Washington Street, Left on Fourth Avenue Ne, Right on G Street NE.



Listed By:
Edina Realty, Inc.

Affinity Real Estate Inc. participates in the Regional Multiple Listing Service of Minnesota, Inc Broker Reciprocity (sm) program, allowing us to display other broker's listings on our website. All properties are subject to prior sale, change or withdrawal.



Call Affinity Real Estate

218-237-3333

info@affinityrealestate.com



Affinity Real Estate - 600 Park Avenue South - Park Rapids MN 56470



website: www.AffinityRealEstate.com | email: info@affinityrealestate.com | office: 218-237-3333 | fax: 218-237-3377

Affinity
REAL ESTATE INC

\$248,900
MLS 6755031 Residential
502 G Street
Brainerd MN 56401



website: www.AffinityRealEstate.com | email: info@affinityrealestate.com | office: 218-237-3333 | fax: 218-237-3377



\$248,900
 MLS 6755031 Residential
 502 G Street
 Brainerd MN 56401



website: www.AffinityRealEstate.com | email: info@affinityrealestate.com | office: 218-237-3333 | fax: 218-237-3377

Affinity
REAL ESTATE INC

\$248,900
MLS 6755031 Residential
502 G Street
Brainerd MN 56401



website: www.AffinityRealEstate.com | email: info@affinityrealestate.com | office: 218-237-3333 | fax: 218-237-3377

Affinity
REAL ESTATE INC

\$248,900
MLS 6755031 Residential
502 G Street
Brainerd MN 56401



website: www.AffinityRealEstate.com | email: info@affinityrealestate.com | office: 218-237-3333 | fax: 218-237-3377

Affinity
REAL ESTATE INC

\$248,900
MLS 6755031 Residential
502 G Street
Brainerd MN 56401



website: www.AffinityRealEstate.com | email: info@affinityrealestate.com | office: 218-237-3333 | fax: 218-237-3377

Affinity
REAL ESTATE INC

\$248,900
MLS 6755031 Residential
502 G Street
Brainerd MN 56401



website: www.AffinityRealEstate.com | email: info@affinityrealestate.com | office: 218-237-3333 | fax: 218-237-3377

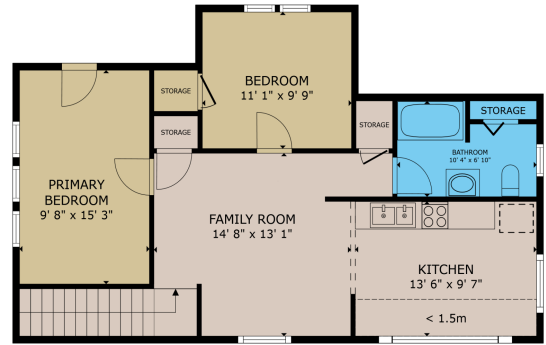
Affinity
REAL ESTATE INC

\$248,900
MLS 6755031 Residential
502 G Street
Brainerd MN 56401



FLOOR 1

GROSS INTERNAL AREA
FLOOR 1: 899 sq.ft. FLOOR 2: 710 sq.ft.
EXCLUDED AREAS: REDUCED HEADROOM 35 sq.ft.
TOTAL: 1,609 sq.ft.
SIZES AND DIMENSIONS ARE APPROXIMATE, ACTUAL MAY VARY.



FLOOR 2

GROSS INTERNAL AREA
FLOOR 1: 899 sq.ft. FLOOR 2: 710 sq.ft.
EXCLUDED AREAS: REDUCED HEADROOM 35 sq.ft.
TOTAL: 1,609 sq.ft.
SIZES AND DIMENSIONS ARE APPROXIMATE, ACTUAL MAY VARY.



website: www.AffinityRealEstate.com | email: info@affinityrealestate.com | office: 218-237-3333 | fax: 218-237-3377



\$248,900
MLS 6755031 Residential
502 G Street
Brainerd MN 56401