



MLS 6755212 Residential

**\$175,000**

1,264 sq ft  
2 bedrooms  
2 baths

13425 Pillager Dam Road  
Pillager MN 56473

Status: Active

#### Description:

This spacious two-bedroom, one-bathroom home is a classic fixer-upper, ready for a buyer with vision and a passion for renovations. Nestled on a peaceful wooded lot that abuts MN Power Land, this property combines privacy with natural beauty and mature tree canopy. Outdoor enthusiasts will also love the nearby Pillager Dam and public boat access to Lake Placid above the dam and Crow Wing River below the dam... offering convenient fishing and boating opportunities. The home features a solid structure with a full, unfinished basement ready for your ideas and plumbed for an additional bathroom. A three season back porch adds relaxation space, perfect for enjoying the surroundings. Included on the property is a 40x24 pole building with electric service and a concrete floor—ideal for a workshop, storage, or future hobby space. With a little vision and sweat equity, this property could shine again. A great opportunity for investors, flippers, or anyone looking to create their own retreat in a quiet, natural setting.

#### Additional Details:

Year Built	1965
Lot Acres	1.08
Lot Dimensions	223x212x218x212
Garage Stalls	2
School District	116
Taxes	\$716
Taxes with Assessments	\$782
Tax Year	2025

#### Additional Features:

**Basement:** Full, Concrete, Unfinished **Fuel:** Natural Gas **Garage:** 2 **Heat:** Forced Air **Sewer:** City Sewer/Connected **Water:** City Water/Connected **Air Conditioning:** Central Air

#### Driving Directions:

From Pillager, take right on Hazel Street to left on W 4th Street to right on Lake Placid Blvd, to left on Pillager Dam Rd to home on right.



Listed By:  
Century 21 Brainerd Realty

Affinity Real Estate Inc. participates in the Regional Multiple Listing Service of Minnesota, Inc Broker Reciprocity (sm) program, allowing us to display other broker's listings on our website. All properties are subject to prior sale, change or withdrawal.



Call Affinity Real Estate

**218-237-3333**

[info@affinityrealestate.com](mailto:info@affinityrealestate.com)



Affinity Real Estate - 600 Park Avenue South - Park Rapids MN 56470





website: [www.AffinityRealEstate.com](http://www.AffinityRealEstate.com) | email: [info@affinityrealestate.com](mailto:info@affinityrealestate.com) | office: 218-237-3333 | fax: 218-237-3377



**\$175,000**  
 MLS 6755212 Residential  
 13425 Pillager Dam Road  
 Pillager MN 56473





website: [www.AffinityRealEstate.com](http://www.AffinityRealEstate.com) | email: [info@affinityrealestate.com](mailto:info@affinityrealestate.com) | office: 218-237-3333 | fax: 218-237-3377



**\$175,000**  
 MLS 6755212 Residential  
 13425 Pillager Dam Road  
 Pillager MN 56473





website: [www.AffinityRealEstate.com](http://www.AffinityRealEstate.com) | email: [info@affinityrealestate.com](mailto:info@affinityrealestate.com) | office: 218-237-3333 | fax: 218-237-3377

**Affinity**  
REAL ESTATE INC

**\$175,000**  
MLS 6755212 Residential  
13425 Pillager Dam Road  
Pillager MN 56473



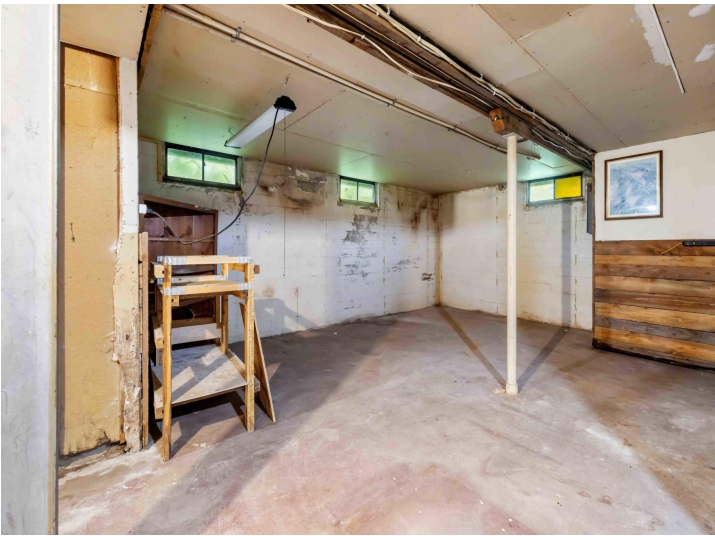


website: [www.AffinityRealEstate.com](http://www.AffinityRealEstate.com) | email: [info@affinityrealestate.com](mailto:info@affinityrealestate.com) | office: 218-237-3333 | fax: 218-237-3377



**\$175,000**  
 MLS 6755212 Residential  
 13425 Pillager Dam Road  
 Pillager MN 56473





website: [www.AffinityRealEstate.com](http://www.AffinityRealEstate.com) | email: [info@affinityrealestate.com](mailto:info@affinityrealestate.com) | office: 218-237-3333 | fax: 218-237-3377

**Affinity**  
REAL ESTATE INC

**\$175,000**  
MLS 6755212 Residential  
13425 Pillager Dam Road  
Pillager MN 56473





website: [www.AffinityRealEstate.com](http://www.AffinityRealEstate.com) | email: [info@affinityrealestate.com](mailto:info@affinityrealestate.com) | office: 218-237-3333 | fax: 218-237-3377

**Affinity**  
REAL ESTATE INC

**\$175,000**  
MLS 6755212 Residential  
13425 Pillager Dam Road  
Pillager MN 56473





website: [www.AffinityRealEstate.com](http://www.AffinityRealEstate.com) | email: [info@affinityrealestate.com](mailto:info@affinityrealestate.com) | office: 218-237-3333 | fax: 218-237-3377



**\$175,000**  
MLS 6755212 Residential  
13425 Pillager Dam Road  
Pillager MN 56473