



MLS 6755427 Land

**\$15,000**

0.5 Acres  
Subdivided

Lot 23 Winter Trl  
Breezy Point MN 56472

Status: Active

**Description:**

Nice wooded level lot in Breezy Point the heart of the lakes area! This lot is on a paved road. You will be near restaurants, golf courses, trails, lakes and Breezy Point Resort! Great place to build a home or cabin and enjoy all that the Lakes Area has to offer!

**Additional Details:**

Lot Acres	0.5
Lot Dimensions	105x226x90x218
School District	186
Taxes	\$103
Taxes with Assessments	\$536
Tax Year	2025

**Additional Features:**

**Driving Directions:**

In Breezy Point on Cty Rd 11, north on Ranchette, to right on Winter Trail and lot on left



Listed By:  
Goedker Realty, Inc

Affinity Real Estate Inc. participates in the Regional Multiple Listing Service of Minnesota, Inc Broker Reciprocity (sm) program, allowing us to display other broker's listings on our website. All properties are subject to prior sale, change or withdrawal.



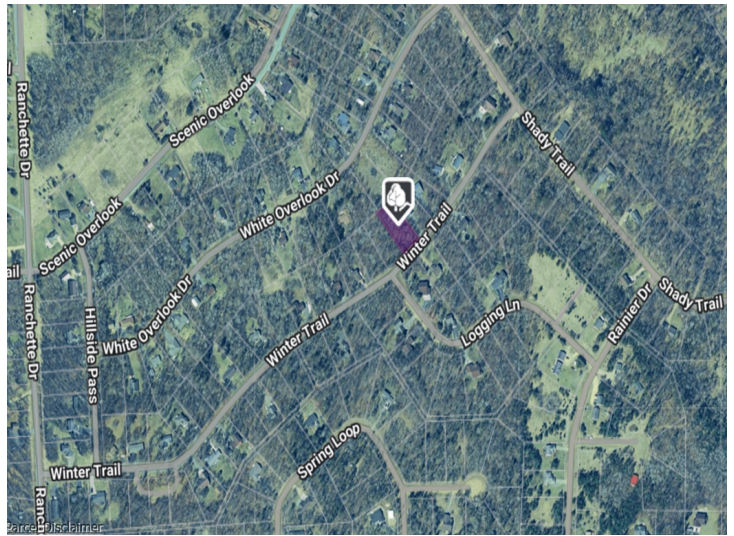
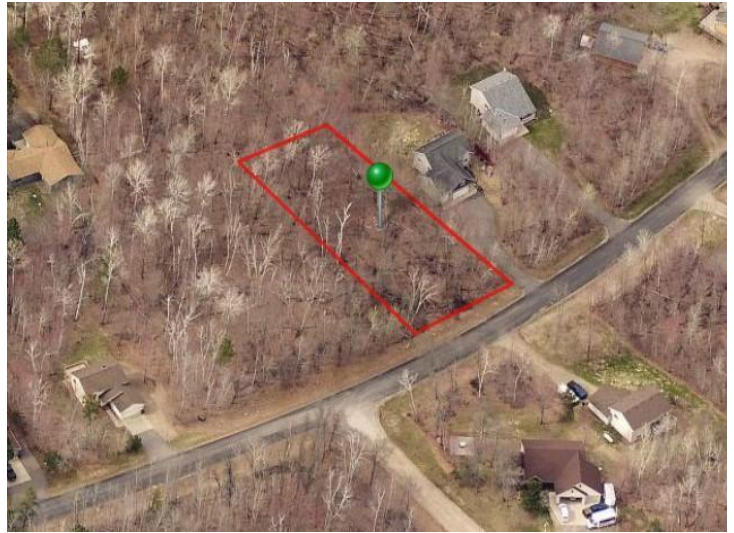
**Call Affinity Real Estate**

**218-237-3333**

**[info@affinityrealestate.com](mailto:info@affinityrealestate.com)**



**Affinity Real Estate - 600 Park Avenue South - Park Rapids MN 56470**



website: [www.AffinityRealEstate.com](http://www.AffinityRealEstate.com) | email: [info@affinityrealestate.com](mailto:info@affinityrealestate.com) | office: 218-237-3333 | fax: 218-237-3377



**\$15,000**  
 MLS 6755427 Land  
 Lot 23 Winter Trl  
 Breezy Point MN 56472