



MLS 6756041 Lake Home

\$799,000

0 sq ft
3 bedrooms
3 baths

25753 Inglewood Drive
Park Rapids MN 56470

Waterfront: Lower Bottle

Status: Active

Description:

Discover this rare opportunity to own a premier, custom built, lakefront home on Lower Bottle Lake. Designed for refined living and wonderful views, this 6,000 square foot home blends timeless luxury with modern functionality, all set on an expansive lot with nearly 500 feet of private shoreline. Currently under construction (foundation, framing, and mechanical rough ins are complete), this home offers a unique chance to personalize your final finishes while enjoying the confidence of a high end design already underway.

Planned highlights include: 3 grand bedroom layouts, plus a private home office, resort style primary suite with panoramic lake views, chef inspired butler's pantry, elegant sunroom looking South over Lower Bottle Lake, theatre room, and dedicated exercise space.

Whether you are envisioning a quiet retreat or an entertainer's dream home, this home is a one of a kind lakeside estate that delivers unmatched potential in a highly desirable luxury market.

Additional Details:

Year Built	2024
Lot Acres	8.15
Lot Dimensions	490x1200x385x830
Garage Stalls	3
School District	309
Taxes	\$1,812
Taxes with Assessments	\$1,812
Tax Year	2025

Additional Features:

Fuel: Propane **Heat:** Forced Air, Fireplace(s), Heat Pump, Radiant Floor

Driving Directions:

From Park Rapids: Head East on 34 for 2.1 miles, turn left on Hwy 4 for 8.4 miles, turn right on Intrepid for 1.5 miles, right on Inglewood for 0.3 mile to #25753 on the right.



Listed By:
Coldwell Banker Crown Realtors

Affinity Real Estate Inc. participates in the Regional Multiple Listing Service of Minnesota, Inc Broker Reciprocity (sm) program, allowing us to display other broker's listings on our website. All properties are subject to prior sale, change or withdrawal.



Call Affinity Real Estate

218-237-3333

info@affinityrealestate.com



Affinity Real Estate - 600 Park Avenue South - Park Rapids MN 56470

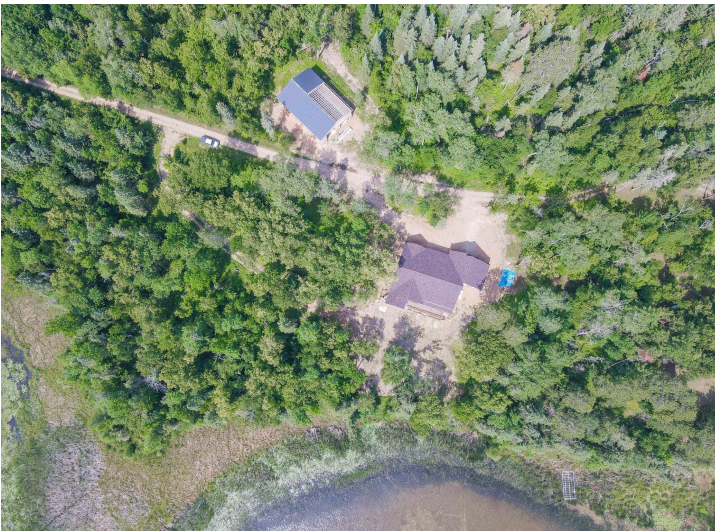


website: www.AffinityRealEstate.com | email: info@affinityrealestate.com | office: 218-237-3333 | fax: 218-237-3377



\$799,000

MLS 6756041 Lake Home
25753 Inglewood Drive
Park Rapids MN 56470



website: www.AffinityRealEstate.com | email: info@affinityrealestate.com | office: 218-237-3333 | fax: 218-237-3377



\$799,000
 MLS 6756041 Lake Home
 25753 Inglewood Drive
 Park Rapids MN 56470



website: www.AffinityRealEstate.com | email: info@affinityrealestate.com | office: 218-237-3333 | fax: 218-237-3377



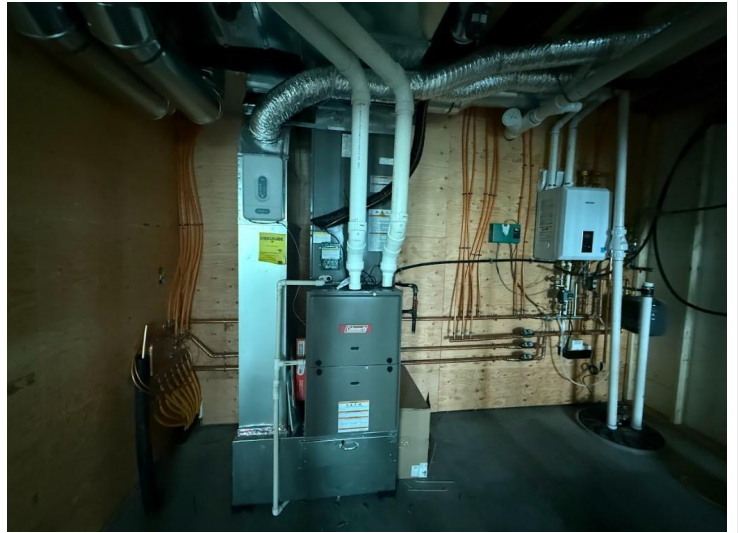
\$799,000
 MLS 6756041 Lake Home
 25753 Inglewood Drive
 Park Rapids MN 56470



website: www.AffinityRealEstate.com | email: info@affinityrealestate.com | office: 218-237-3333 | fax: 218-237-3377



\$799,000
MLS 6756041 Lake Home
25753 Inglewood Drive
Park Rapids MN 56470



website: www.AffinityRealEstate.com | email: info@affinityrealestate.com | office: 218-237-3333 | fax: 218-237-3377

Affinity
REAL ESTATE INC

\$799,000
MLS 6756041 Lake Home
25753 Inglewood Drive
Park Rapids MN 56470



website: www.AffinityRealEstate.com | email: info@affinityrealestate.com | office: 218-237-3333 | fax: 218-237-3377

Affinity
REAL ESTATE INC

\$799,000
MLS 6756041 Lake Home
25753 Inglewood Drive
Park Rapids MN 56470