



MLS 6756217 Residential

\$229,900

770 sq ft
2 bedrooms
1 baths

1602 Pennsylvania Avenue
Brainerd MN 56401

Status: Active

Description:

Brimming with character and timeless charm, this beautifully updated two-bedroom residence is nestled on a coveted corner lot in one of Brainerd's most desirable neighborhoods. Rich in original details—arched doorways, sunlit spaces, and classic lines—the home has been thoughtfully enhanced for modern living. A stunning remodeled kitchen showcases new cabinetry, granite countertops, stylish backsplash, updated sink and faucet, and a suite of new appliances. Fresh interior paint graces every wall, ceiling, and window, while new hardware adds a cohesive, polished touch throughout. The bathroom has been fully renovated, and the primary bedroom features new flooring for added comfort. Additional highlights include freshly painted exterior surfaces, a painted garage floor, and tasteful landscaping that enhances curb appeal. The private, fenced backyard offers a serene setting for outdoor dining, gardening, or peaceful moments. A true blend of vintage charm and modern refinement—this is a home you won't want to miss.

Additional Details:

Year Built	1939
Lot Acres	0.15
Lot Dimensions	50x132
Garage Stalls	1
School District	181
Taxes	\$1,270
Taxes with Assessments	\$1,270
Tax Year	2024

Additional Features:

Basement: Partial, Storage Space **Fuel:** Natural Gas **Garage:** 1 **Heat:** Forced Air **Sewer:** City Sewer/Connected **Water:** City Water/Connected
Air Conditioning: Window Unit(s)

Driving Directions:

From the Historic Water Tower, go south on S 6th St (371 bus) to Right onto Cedar St to Left onto Pennsylvania, corner lot.



Listed By:
Northland Sotheby's International Realty

Affinity Real Estate Inc. participates in the Regional Multiple Listing Service of Minnesota, Inc Broker Reciprocity (sm) program, allowing us to display other broker's listings on our website. All properties are subject to prior sale, change or withdrawal.



Call Affinity Real Estate

218-237-3333

info@affinityrealestate.com



Affinity Real Estate - 600 Park Avenue South - Park Rapids MN 56470



website: www.AffinityRealEstate.com | email: info@affinityrealestate.com | office: 218-237-3333 | fax: 218-237-3377



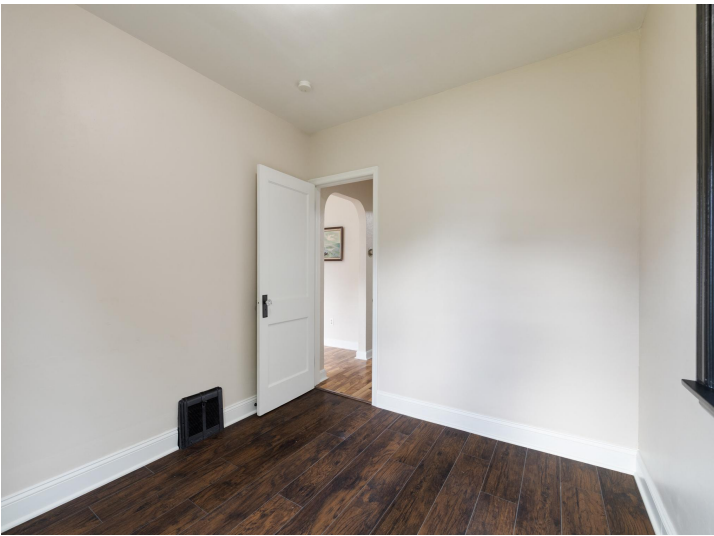
\$229,900
 MLS 6756217 Residential
 1602 Pennsylvania Avenue
 Brainerd MN 56401



website: www.AffinityRealEstate.com | email: info@affinityrealestate.com | office: 218-237-3333 | fax: 218-237-3377

Affinity
REAL ESTATE INC

\$229,900
MLS 6756217 Residential
1602 Pennsylvania Avenue
Brainerd MN 56401



website: www.AffinityRealEstate.com | email: info@affinityrealestate.com | office: 218-237-3333 | fax: 218-237-3377



\$229,900
 MLS 6756217 Residential
 1602 Pennsylvania Avenue
 Brainerd MN 56401



website: www.AffinityRealEstate.com | email: info@affinityrealestate.com | office: 218-237-3333 | fax: 218-237-3377



\$229,900
MLS 6756217 Residential
1602 Pennsylvania Avenue
Brainerd MN 56401