



MLS 6756227 Residential

**\$449,900**

2,925 sq ft  
5 bedrooms  
3 baths

4710 Michelle Circle  
Baxter MN 56425

Status: Active

**Description:**

4710 Michelle Circle is situated on a .69 acre corner lot in the heart of the Baxter community with 2,925 finished square feet. This ranch style home offers 3 bedrooms and 2 baths on the main level, an open concept kitchen and dining room, formal living room and a stunning private sunroom with vaulted tongue and groove ceilings overlooking the fully fenced in backyard. The lower level was finished in 2020 adding 2 additional bedrooms, an office with french doors, built-in dry bar with beverage fridge and floating shelves, a 3/4 bathroom and a second generously sized living room. One level living is possible with main level laundry room and a private primary suite. Plenty of space for storage in the attached 3-stall garage and the storage room in the lower level. Soak in the morning sun on the front porch and enjoy the afternoons on the private back patio. Located just minutes from Whipple Beach and White Sand Lake, close to many parks, schools and trails. Move-in and enjoy!

**Additional Details:**

Year Built	1995
Lot Acres	0.69
Lot Dimensions	IRR
Garage Stalls	3
School District	181
Taxes	\$3,933
Taxes with Assessments	\$3,958
Tax Year	2025

**Additional Features:**

**Basement:** Block, Egress Window(s), Finished, Full, Storage Space **Fuel:** Natural Gas **Garage:** 3 **Heat:** Forced Air **Sewer:** City Sewer/Connected  
**Water:** City Water/Connected, Drilled, Well **Air Conditioning:** Central Air

**Driving Directions:**

From 210, turn onto Memorywood Drive, turn left onto Travine Drive, property at the corner of Michelle Circle and Travine Drive.



Listed By:  
RE/MAX Results - Nisswa

Affinity Real Estate Inc. participates in the Regional Multiple Listing Service of Minnesota, Inc Broker Reciprocity (sm) program, allowing us to display other broker's listings on our website. All properties are subject to prior sale, change or withdrawal.



**Call Affinity Real Estate**

**218-237-3333**

**info@affinityrealestate.com**



**Affinity Real Estate - 600 Park Avenue South - Park Rapids MN 56470**





website: [www.AffinityRealEstate.com](http://www.AffinityRealEstate.com) | email: [info@affinityrealestate.com](mailto:info@affinityrealestate.com) | office: 218-237-3333 | fax: 218-237-3377

**Affinity**  
REAL ESTATE INC

**\$449,900**  
MLS 6756227 Residential  
4710 Michelle Circle  
Baxter MN 56425





website: [www.AffinityRealEstate.com](http://www.AffinityRealEstate.com) | email: [info@affinityrealestate.com](mailto:info@affinityrealestate.com) | office: 218-237-3333 | fax: 218-237-3377

**Affinity**  
REAL ESTATE INC

**\$449,900**  
MLS 6756227 Residential  
4710 Michelle Circle  
Baxter MN 56425



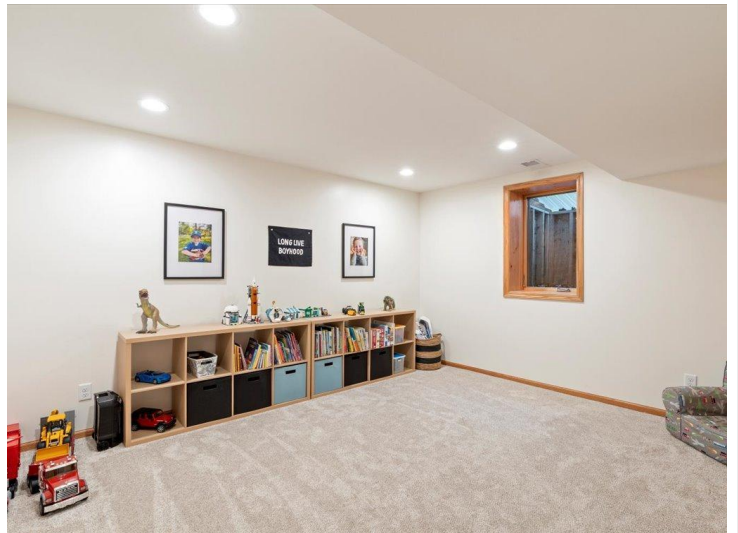
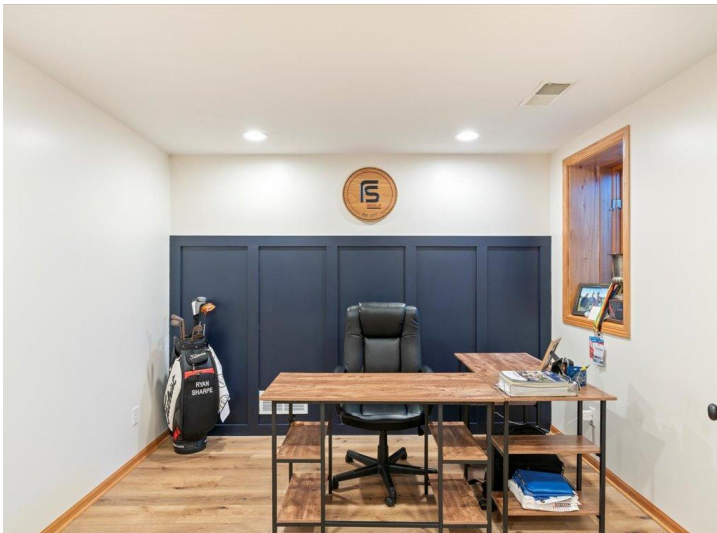
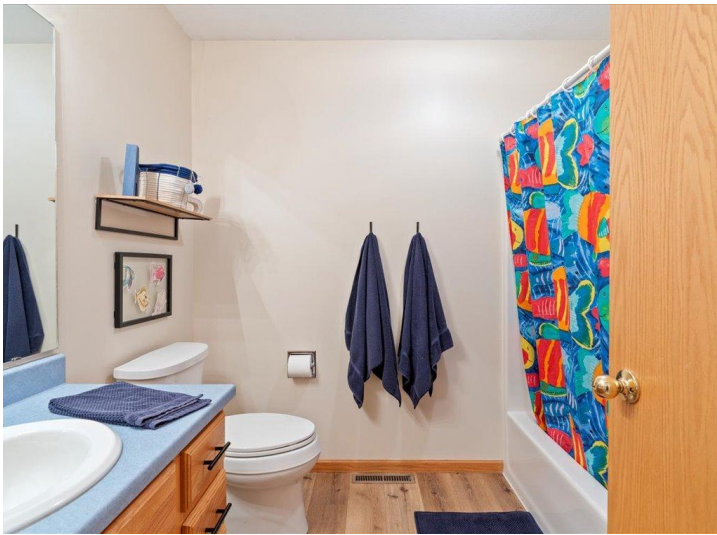


website: [www.AffinityRealEstate.com](http://www.AffinityRealEstate.com) | email: [info@affinityrealestate.com](mailto:info@affinityrealestate.com) | office: 218-237-3333 | fax: 218-237-3377

**Affinity**  
REAL ESTATE INC

**\$449,900**  
MLS 6756227 Residential  
4710 Michelle Circle  
Baxter MN 56425





website: [www.AffinityRealEstate.com](http://www.AffinityRealEstate.com) | email: [info@affinityrealestate.com](mailto:info@affinityrealestate.com) | office: 218-237-3333 | fax: 218-237-3377

**Affinity**  
REAL ESTATE INC

**\$449,900**  
MLS 6756227 Residential  
4710 Michelle Circle  
Baxter MN 56425





website: [www.AffinityRealEstate.com](http://www.AffinityRealEstate.com) | email: [info@affinityrealestate.com](mailto:info@affinityrealestate.com) | office: 218-237-3333 | fax: 218-237-3377



**\$449,900**  
 MLS 6756227 Residential  
 4710 Michelle Circle  
 Baxter MN 56425





website: [www.AffinityRealEstate.com](http://www.AffinityRealEstate.com) | email: [info@affinityrealestate.com](mailto:info@affinityrealestate.com) | office: 218-237-3333 | fax: 218-237-3377



**\$449,900**  
MLS 6756227 Residential  
4710 Michelle Circle  
Baxter MN 56425





website: [www.AffinityRealEstate.com](http://www.AffinityRealEstate.com) | email: [info@affinityrealestate.com](mailto:info@affinityrealestate.com) | office: 218-237-3333 | fax: 218-237-3377



**\$449,900**  
MLS 6756227 Residential  
4710 Michelle Circle  
Baxter MN 56425