



MLS 6756243 Residential

\$370,000

1,792 sq ft
3 bedrooms
2 baths

31888 Green Scene Drive
Pequot Lakes MN 56472

Status: Active

Description:

Tucked among the trees, this beautifully maintained 3-bedroom, 2-bathroom home offers the perfect blend of warmth, comfort, and natural charm. From the moment you step inside, you're greeted by a stunning vaulted wood ceiling and a floor-to-ceiling stone fireplace that anchors the open-concept living space—ideal for both quiet evenings and lively gatherings.

The kitchen is thoughtfully designed with natural wood cabinetry, sleek black countertops, with black and stainless-steel appliances—flowing seamlessly into the dining and living areas for effortless entertaining. Large windows throughout bring in an abundance of natural light and offer peaceful wooded views.

The home features a main-level bathroom with updated fixtures and a convenient layout, while each bedroom offers cozy ambiance. Step outside to enjoy your private decks, ideal for morning coffee or grilling under the canopy of pines.

Nestled on a quiet, tree-lined drive just minutes from golfing, boating, dining, and the amenities of Breezy Point Resort and the Whitefish Chain, this home offers the ideal setting—whether you're seeking a year-round residence or a weekend getaway, it's truly a must-see.

Additional Details:

Year Built	2001
Lot Acres	0.63
Lot Dimensions	217x233x200x26
Garage Stalls	2
School District	186
Taxes	\$2,089
Taxes with Assessments	\$2,114
Tax Year	2025

Additional Features:

Basement: Walkout **Fuel:** Natural Gas, Propane **Garage:** 2 **Heat:** Forced Air **Sewer:** Septic System Compliant - Yes **Water:** Drilled, Well **Air Conditioning:** Central Air

Driving Directions:

From Breezy Point Resort, go North on County Road 11, Left on Bushy Point Road, Left on Green Scene Drive is on left.



Listed By:
Edina Realty, Inc.

Affinity Real Estate Inc. participates in the Regional Multiple Listing Service of Minnesota, Inc Broker Reciprocity (sm) program, allowing us to display other broker's listings on our website. All properties are subject to prior sale, change or withdrawal.



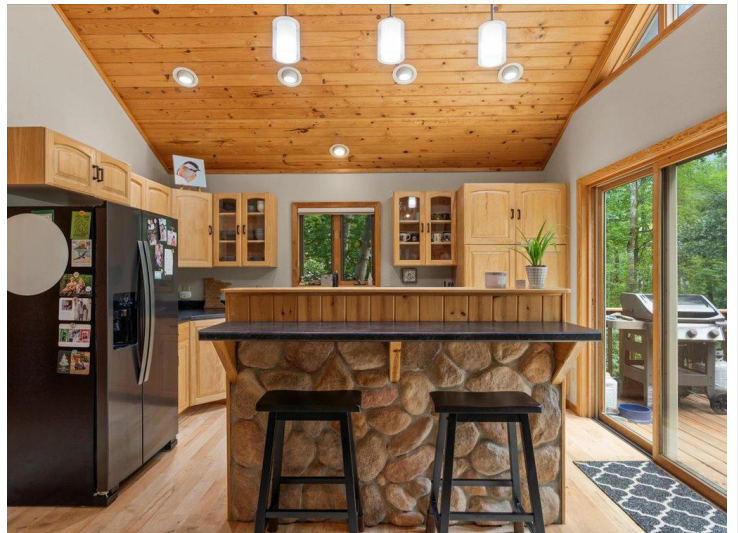
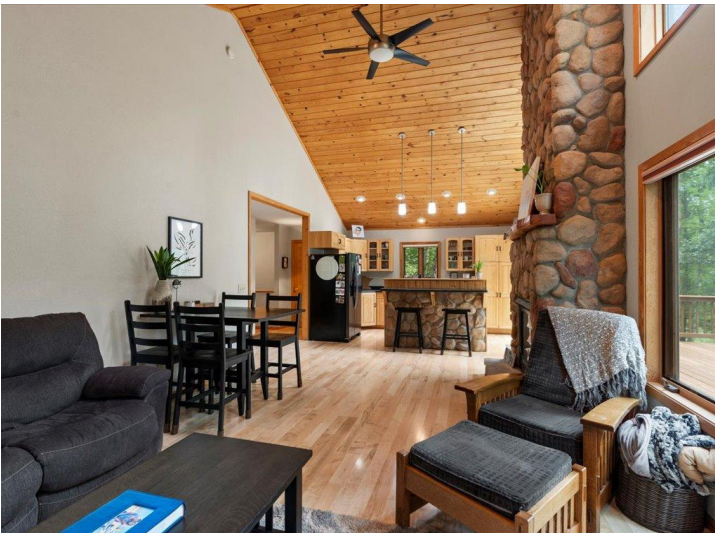
Call Affinity Real Estate

218-237-3333

info@affinityrealestate.com



Affinity Real Estate - 600 Park Avenue South - Park Rapids MN 56470

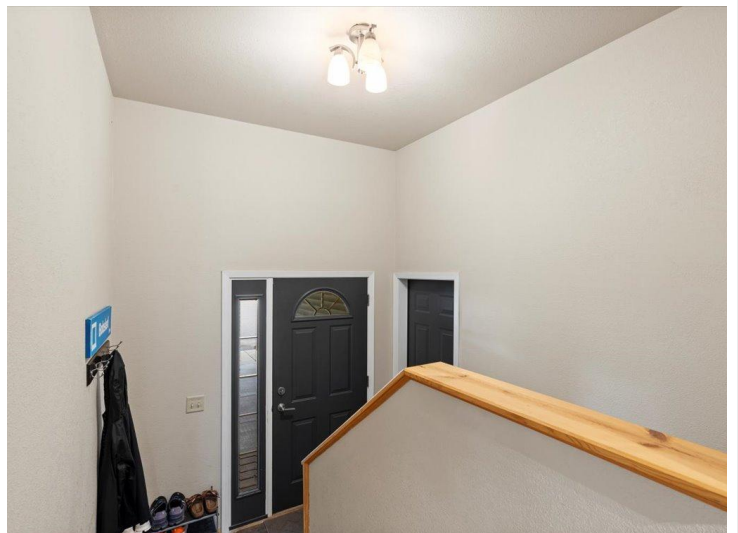


website: www.AffinityRealEstate.com | email: info@affinityrealestate.com | office: 218-237-3333 | fax: 218-237-3377

Affinity
REAL ESTATE INC

\$370,000

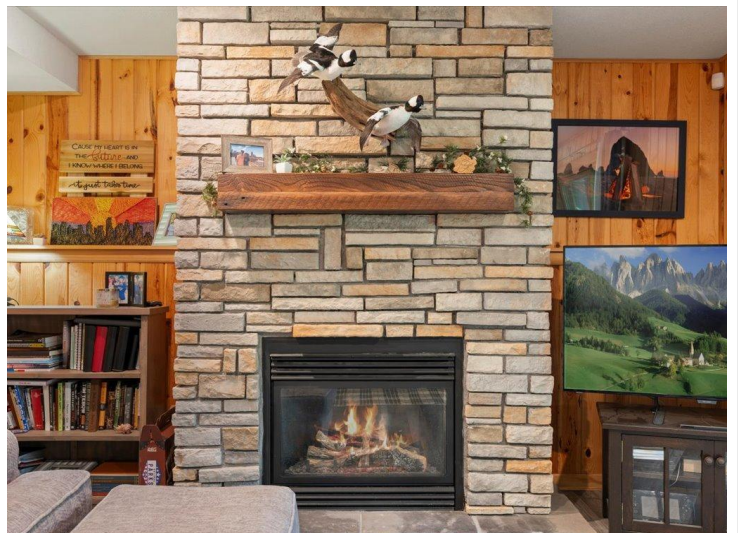
MLS 6756243 Residential
31888 Green Scene Drive
Pequot Lakes MN 56472



website: www.AffinityRealEstate.com | email: info@affinityrealestate.com | office: 218-237-3333 | fax: 218-237-3377

Affinity
REAL ESTATE INC

\$370,000
MLS 6756243 Residential
31888 Green Scene Drive
Pequot Lakes MN 56472



website: www.AffinityRealEstate.com | email: info@affinityrealestate.com | office: 218-237-3333 | fax: 218-237-3377

Affinity
REAL ESTATE INC

\$370,000
MLS 6756243 Residential
31888 Green Scene Drive
Pequot Lakes MN 56472



website: www.AffinityRealEstate.com | email: info@affinityrealestate.com | office: 218-237-3333 | fax: 218-237-3377



\$370,000

MLS 6756243 Residential
31888 Green Scene Drive
Pequot Lakes MN 56472



website: www.AffinityRealEstate.com | email: info@affinityrealestate.com | office: 218-237-3333 | fax: 218-237-3377



\$370,000

MLS 6756243 Residential
31888 Green Scene Drive
Pequot Lakes MN 56472



website: www.AffinityRealEstate.com | email: info@affinityrealestate.com | office: 218-237-3333 | fax: 218-237-3377

Affinity
REAL ESTATE INC

\$370,000

MLS 6756243 Residential
31888 Green Scene Drive
Pequot Lakes MN 56472