



MLS 6756478 Lake Home

\$599,900

2,012 sq ft
3 bedrooms
2 baths

51278 Wildview Lane
Bemidji MN 56601

Waterfront: Grace

Status: Active

Description:

Welcome to Wildview Lane on beautiful GRACE LAKE! Enjoy gorgeous lake views along with a very well maintained 3 plus bedroom, 2 bath home with an impressive 26x90 garage that will have you saying "wow!" The "wall of windows" is open to the lake view in the vaulted great room. This home offers many outdoor living spaces, and multiple decks to enjoy the outdoors, great entertaining spaces, or simply relaxing. Level lakeshore. Cozy T&G walls and ceiling in the 4-season sunroom, as well as a gas fireplace. Paved driveway, lovely landscaping. All of this is a must see! Here is your opportunity to start your "Lake Life" and memory making on gorgeous Grace Lake!

Additional Details:

Year Built	1989
Lot Acres	0.71
Lot Dimensions	81x338x100x335
Garage Stalls	6
School District	31
Taxes	\$3,380
Taxes with Assessments	\$3,380
Tax Year	2025

Additional Features:

Fuel: Propane **Heat:** Forced Air

Driving Directions:

From Bemidji take US Hwy 2 E to Wild Wind Rd (approximately 4 miles from US 2 & Paul Bunyan Dr merge). Left on Wild Wind Rd. Keep right on Wild Wind to Wildview. Right on Wildview. Home will be on your left.



Listed By:
Better Homes and Gardens Real Estate First Choice

Affinity Real Estate Inc. participates in the Regional Multiple Listing Service of Minnesota, Inc Broker Reciprocity (sm) program, allowing us to display other broker's listings on our website. All properties are subject to prior sale, change or withdrawal.



Call Affinity Real Estate

218-237-3333

info@affinityrealestate.com



Affinity Real Estate - 600 Park Avenue South - Park Rapids MN 56470



website: www.AffinityRealEstate.com | email: info@affinityrealestate.com | office: 218-237-3333 | fax: 218-237-3377

Affinity
REAL ESTATE INC

\$599,900
MLS 6756478 Lake Home
51278 Wildview Lane
Bemidji MN 56601



website: www.AffinityRealEstate.com | email: info@affinityrealestate.com | office: 218-237-3333 | fax: 218-237-3377

Affinity
REAL ESTATE INC

\$599,900
MLS 6756478 Lake Home
51278 Wildview Lane
Bemidji MN 56601



website: www.AffinityRealEstate.com | email: info@affinityrealestate.com | office: 218-237-3333 | fax: 218-237-3377

Affinity
REAL ESTATE INC

\$599,900

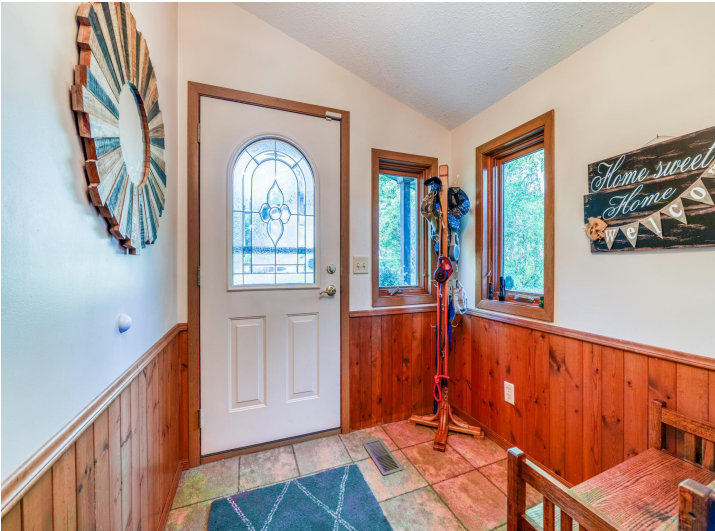
MLS 6756478 Lake Home
51278 Wildview Lane
Bemidji MN 56601



website: www.AffinityRealEstate.com | email: info@affinityrealestate.com | office: 218-237-3333 | fax: 218-237-3377

Affinity
REAL ESTATE INC

\$599,900
MLS 6756478 Lake Home
51278 Wildview Lane
Bemidji MN 56601



website: www.AffinityRealEstate.com | email: info@affinityrealestate.com | office: 218-237-3333 | fax: 218-237-3377

Affinity
REAL ESTATE INC

\$599,900
MLS 6756478 Lake Home
51278 Wildview Lane
Bemidji MN 56601



website: www.AffinityRealEstate.com | email: info@affinityrealestate.com | office: 218-237-3333 | fax: 218-237-3377

Affinity
REAL ESTATE INC

\$599,900
MLS 6756478 Lake Home
51278 Wildview Lane
Bemidji MN 56601



website: www.AffinityRealEstate.com | email: info@affinityrealestate.com | office: 218-237-3333 | fax: 218-237-3377

Affinity
REAL ESTATE INC

\$599,900

MLS 6756478 Lake Home
51278 Wildview Lane
Bemidji MN 56601



website: www.AffinityRealEstate.com | email: info@affinityrealestate.com | office: 218-237-3333 | fax: 218-237-3377

Affinity
REAL ESTATE INC

\$599,900

MLS 6756478 Lake Home
51278 Wildview Lane
Bemidji MN 56601



website: www.AffinityRealEstate.com | email: info@affinityrealestate.com | office: 218-237-3333 | fax: 218-237-3377

Affinity
REAL ESTATE INC

\$599,900

MLS 6756478 Lake Home
51278 Wildview Lane
Bemidji MN 56601



website: www.AffinityRealEstate.com | email: info@affinityrealestate.com | office: 218-237-3333 | fax: 218-237-3377



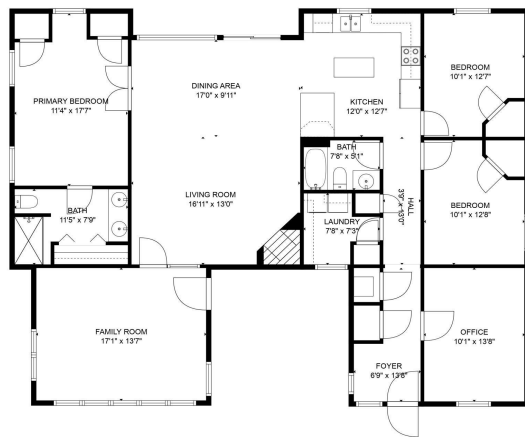
\$599,900
 MLS 6756478 Lake Home
 51278 Wildview Lane
 Bemidji MN 56601



website: www.AffinityRealEstate.com | email: info@affinityrealestate.com | office: 218-237-3333 | fax: 218-237-3377

Affinity
REAL ESTATE INC

\$599,900
MLS 6756478 Lake Home
51278 Wildview Lane
Bemidji MN 56601



TOTAL: 1739 sq. ft.
FLOOR 1: 1739 sq. ft.

WALLS: 109 sq. ft.
FLOOR PLAN CREATED BY CHICAGO A/R. MEASUREMENTS GIVENED HIGHLY RELIABLE BUT NOT GUARANTEED.

website: www.AffinityRealEstate.com | email: info@affinityrealestate.com | office: 218-237-3333 | fax: 218-237-3377



\$599,900

MLS 6756478 Lake Home
51278 Wildview Lane
Bemidji MN 56601