



MLS 6756541 Residential

**\$1**

1,680 sq ft  
3 bedrooms  
2 baths

9091 52nd Street  
Verndale MN 56481

Status: Pending

**Description:**

240-Acre Ranch – Online Auction Closes August 27!

Here's your chance to own a truly versatile and productive ranch property just outside Verndale, Minnesota! This 240-acre gem offers a perfect blend of equestrian, livestock, and farming potential — all in one beautiful setting.

Online Auction – Bidding Closes August 27!

**Property Highlights:**

3 Bed, 2 Bath Walkout Rambler – Well-maintained home with peaceful views and country charm.

12+ Box Stall Horse Barn each with automatic water. Insulated Indoor Riding Arena – Ride and train year-round.

Additional smaller Outbuildings – Ample space for equipment, feed, or livestock shelter.

Excellent Pastureland – Ideal for grazing with rich soil and established fencing.

Great Setup for Raising Cattle – Fully fenced and cross-fenced for rotation or mixed-use.

Crop Potential – With quality soil and open land, there's also potential for row crops if desired.

Two Private Ponds – Natural water sources add both functionality and scenic appeal.

Two outside Richie watered.

High-Yield Hay Ground – Producing 300+ round bales per cutting, ideal for feed or sale.

This property is perfect for horse lovers, cattle producers, hay operations, or anyone looking for a well-rounded rural investment with income potential.

Listed by Verndale, MN  
Mississippi Valley Real Estate

Additional Details:  
Year Built 2000  
Lot Acres 243.2  
Lot Dimensions 1x1



**Call Affinity Real Estate**

**218-237-3333**

**info@affinityrealestate.com**

Agents register your Buyers prior to



**Affinity Real Estate - 600 Park Avenue South - Park Rapids MN 56470**





website: [www.AffinityRealEstate.com](http://www.AffinityRealEstate.com) | email: [info@affinityrealestate.com](mailto:info@affinityrealestate.com) | office: 218-237-3333 | fax: 218-237-3377



**\$1**  
 MLS 6756541 Residential  
 9091 52nd Street  
 Verndale MN 56481





website: [www.AffinityRealEstate.com](http://www.AffinityRealEstate.com) | email: [info@affinityrealestate.com](mailto:info@affinityrealestate.com) | office: 218-237-3333 | fax: 218-237-3377



**\$1**  
MLS 6756541 Residential  
9091 52nd Street  
Verndale MN 56481



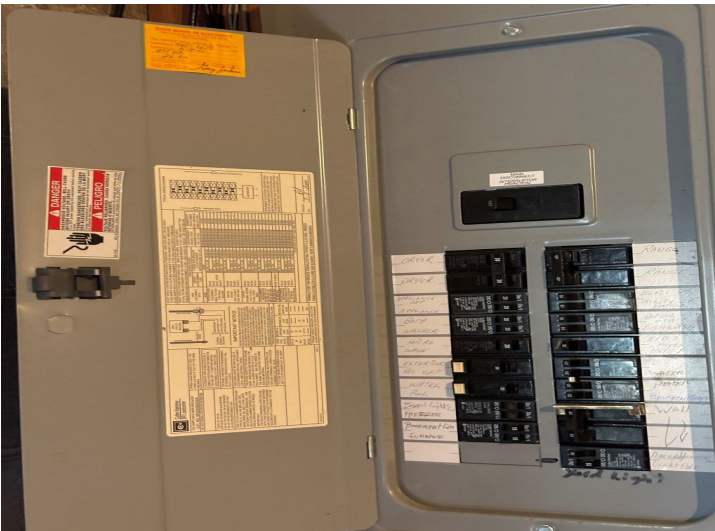


website: [www.AffinityRealEstate.com](http://www.AffinityRealEstate.com) | email: [info@affinityrealestate.com](mailto:info@affinityrealestate.com) | office: 218-237-3333 | fax: 218-237-3377

**Affinity**  
REAL ESTATE INC

**\$1**  
MLS 6756541 Residential  
9091 52nd Street  
Verndale MN 56481





website: [www.AffinityRealEstate.com](http://www.AffinityRealEstate.com) | email: [info@affinityrealestate.com](mailto:info@affinityrealestate.com) | office: 218-237-3333 | fax: 218-237-3377

**Affinity**  
REAL ESTATE INC

**\$1**  
MLS 6756541 Residential  
9091 52nd Street  
Verndale MN 56481

website: [www.AffinityRealEstate.com](http://www.AffinityRealEstate.com) | email: [info@affinityrealestate.com](mailto:info@affinityrealestate.com) | office: 218-237-3333 | fax:218-237-3377



**\$1**  
MLS 6756541 Residential  
9091 52nd Street  
Verndale MN 56481

website: [www.AffinityRealEstate.com](http://www.AffinityRealEstate.com) | email: [info@affinityrealestate.com](mailto:info@affinityrealestate.com) | office: 218-237-3333 | fax:218-237-3377



**\$1**  
MLS 6756541 Residential  
9091 52nd Street  
Verndale MN 56481

website: [www.AffinityRealEstate.com](http://www.AffinityRealEstate.com) | email: [info@affinityrealestate.com](mailto:info@affinityrealestate.com) | office: 218-237-3333 | fax:218-237-3377



**\$1**  
MLS 6756541 Residential  
9091 52nd Street  
Verndale MN 56481



website: [www.AffinityRealEstate.com](http://www.AffinityRealEstate.com) | email: [info@affinityrealestate.com](mailto:info@affinityrealestate.com) | office: 218-237-3333 | fax:218-237-3377



**\$1**  
MLS 6756541 Residential  
9091 52nd Street  
Verndale MN 56481

website: [www.AffinityRealEstate.com](http://www.AffinityRealEstate.com) | email: [info@affinityrealestate.com](mailto:info@affinityrealestate.com) | office: 218-237-3333 | fax:218-237-3377



**\$1**  
MLS 6756541 Residential  
9091 52nd Street  
Verndale MN 56481



website: [www.AffinityRealEstate.com](http://www.AffinityRealEstate.com) | email: [info@affinityrealestate.com](mailto:info@affinityrealestate.com) | office: 218-237-3333 | fax:218-237-3377



**\$1**  
MLS 6756541 Residential  
9091 52nd Street  
Verndale MN 56481

website: [www.AffinityRealEstate.com](http://www.AffinityRealEstate.com) | email: [info@affinityrealestate.com](mailto:info@affinityrealestate.com) | office: 218-237-3333 | fax:218-237-3377



**\$1**  
MLS 6756541 Residential  
9091 52nd Street  
Verndale MN 56481



website: [www.AffinityRealEstate.com](http://www.AffinityRealEstate.com) | email: [info@affinityrealestate.com](mailto:info@affinityrealestate.com) | office: 218-237-3333 | fax:218-237-3377



**\$1**  
MLS 6756541 Residential  
9091 52nd Street  
Verndale MN 56481

website: [www.AffinityRealEstate.com](http://www.AffinityRealEstate.com) | email: [info@affinityrealestate.com](mailto:info@affinityrealestate.com) | office: 218-237-3333 | fax:218-237-3377



**\$1**  
MLS 6756541 Residential  
9091 52nd Street  
Verndale MN 56481