



MLS 6756577 Residential

\$639,900

2,304 sq ft
3 bedrooms
2 baths

6740 Saint Mathias Road
Brainerd MN 56401

Status: Active

Description:

Welcome to your private retreat on 20+ acres. This home offers over 2,000 square feet of thoughtfully designed living space. Step inside to feel the charm of tongue-and-groove vaulted ceilings, ceramic tiled floors, and classic 6-panel doors. Rich hardwood floors add warmth. The layout flows with ease, featuring a spacious kitchen, cozy living areas, and convenient main-level laundry. Outside, breathe in the tranquility from your covered patio—ideal for morning coffee or starlit summer nights. The insulated 24x30 attached garage offers everyday functionality, while the impressive 40x60 detached heated garage opens the door to hobbies, workshops, or extra storage.

Additional Details:

Year Built	2002
Lot Acres	22.02
Lot Dimensions	728x1313
Garage Stalls	8
School District	181
Taxes	\$3,390
Taxes with Assessments	\$3,390
Tax Year	2024

Additional Features:

Basement: None **Fuel:** Propane **Garage:** 8 **Heat:** Forced Air **Sewer:** Mound Septic, Private Sewer, Septic System Compliant - Yes **Water:** Drilled, Private, Well **Air Conditioning:** Central Air

Driving Directions:

From Brainerd South on Old Hwy 371 to South on Saint Mathias Rd/ Cty Rd 21 4 miles to property on East side of Road



Listed By:
Keller Williams Realty Professionals

Affinity Real Estate Inc. participates in the Regional Multiple Listing Service of Minnesota, Inc Broker Reciprocity (sm) program, allowing us to display other broker's listings on our website. All properties are subject to prior sale, change or withdrawal.



Call Affinity Real Estate

218-237-3333

info@affinityrealestate.com



Affinity Real Estate - 600 Park Avenue South - Park Rapids MN 56470



website: www.AffinityRealEstate.com | email: info@affinityrealestate.com | office: 218-237-3333 | fax: 218-237-3377



\$639,900
 MLS 6756577 Residential
 6740 Saint Mathias Road
 Brainerd MN 56401



website: www.AffinityRealEstate.com | email: info@affinityrealestate.com | office: 218-237-3333 | fax: 218-237-3377

Affinity
REAL ESTATE INC

\$639,900
MLS 6756577 Residential
6740 Saint Mathias Road
Brainerd MN 56401



website: www.AffinityRealEstate.com | email: info@affinityrealestate.com | office: 218-237-3333 | fax: 218-237-3377

Affinity
REAL ESTATE INC

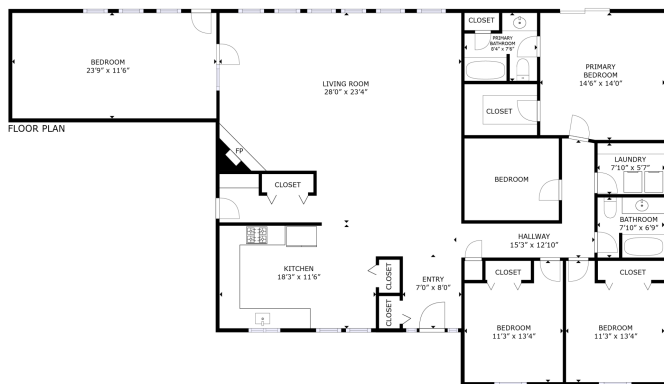
\$639,900
MLS 6756577 Residential
6740 Saint Mathias Road
Brainerd MN 56401



website: www.AffinityRealEstate.com | email: info@affinityrealestate.com | office: 218-237-3333 | fax: 218-237-3377

Affinity
REAL ESTATE INC

\$639,900
MLS 6756577 Residential
6740 Saint Mathias Road
Brainerd MN 56401



GROSS INTERNAL AREA
FLOOR PLAN: 2,232 sq. ft.
SIZES AND DIMENSIONS ARE APPROXIMATE. ACTUAL MAY VARY.



website: www.AffinityRealEstate.com | email: info@affinityrealestate.com | office: 218-237-3333 | fax: 218-237-3377



\$639,900
MLS 6756577 Residential
6740 Saint Mathias Road
Brainerd MN 56401