



MLS 6756662 Land

**\$495,000**

10.65 Acres  
Raw Land

000 Colonywood Lane  
Brainerd MN 56401

Status: Active

#### Description:

Exceptional 10-Acre Development Opportunity – 3 Prime Lots in Brainerd. Discover a rare chance to own and develop a 10-acre parcel in one of Little Falls' most desirable and fast-growing areas. Subdivided into 3 generously sized lots, this expansive property offers remarkable flexibility for a wide range of residential projects—from single-family homes to multi-family developments and more. Strategically located next to established apartment buildings, the site is ideally suited for developers or investors looking to meet the region's rising housing demand. The central location places you minutes from local schools, places of worship, medical facilities, and close to Central Lakes College offering convenient access to nearby communities. Whether you're a builder, investor, or developer, this property represents a unique opportunity to create a high-impact residential community in the heart of Brainerd. Seize this chance to shape the future of this thriving neighborhood. Don't miss out—explore the potential of this exceptional 10-acre property today!

#### Additional Details:

Lot Acres	10.65
Lot Dimensions	irr
School District	181
Taxes	\$4,720
Taxes with Assessments	\$4,720
Tax Year	2024

#### Additional Features:

#### Driving Directions:

Colony wood to lot.



Listed By:  
RE/MAX Results

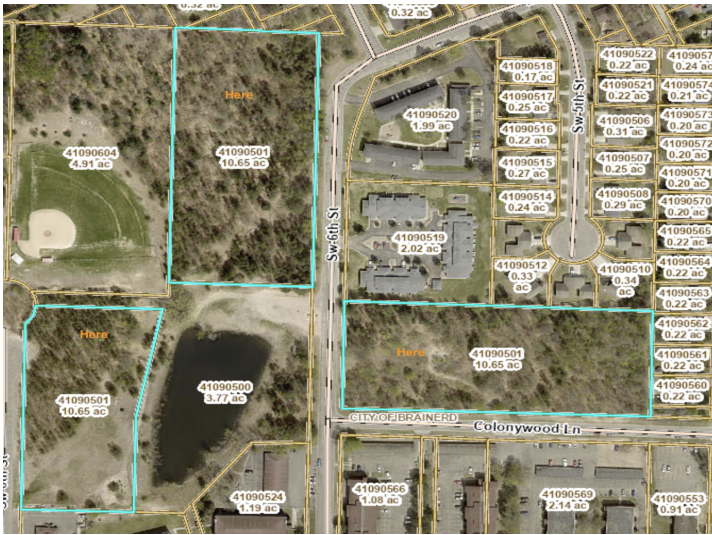
Affinity Real Estate Inc. participates in the Regional Multiple Listing Service of Minnesota, Inc Broker Reciprocity (sm) program, allowing us to display other broker's listings on our website. All properties are subject to prior sale, change or withdrawal.



Call Affinity Real Estate  
**218-237-3333**  
[info@affinityrealestate.com](mailto:info@affinityrealestate.com)



Affinity Real Estate - 600 Park Avenue South - Park Rapids MN 56470



website: [www.AffinityRealEstate.com](http://www.AffinityRealEstate.com) | email: [info@affinityrealestate.com](mailto:info@affinityrealestate.com) | office: 218-237-3333 | fax: 218-237-3377



**\$495,000**

MLS 6756662 Land  
000 Colonywood Lane  
Brainerd MN 56401