



MLS 6756802 Commercial

**\$750**

677 Anne Street  
Bemidji MN 56601

Status: Active

**Description:**

(description unavailable)

**Additional Details:**

Year Built	2010
Lot Acres	2.17
Lot Dimensions	1
School District	31
Taxes	\$24,704
Taxes with Assessments	\$24,704
Tax Year	2023

**Additional Features:**

**Basement:** None **Fuel:** Natural Gas **Heat:** Forced Air **Sewer:** City Sewer/Connected **Water:** City Water/Connected **Air Conditioning:** Central Air

**Driving Directions:**

3 Blocks East on Anne Street NW from Highway 71



Listed By:  
Optima Realty, Inc

Affinity Real Estate Inc. participates in the Regional Multiple Listing Service of Minnesota, Inc Broker Reciprocity (sm) program, allowing us to display other broker's listings on our website. All properties are subject to prior sale, change or withdrawal.



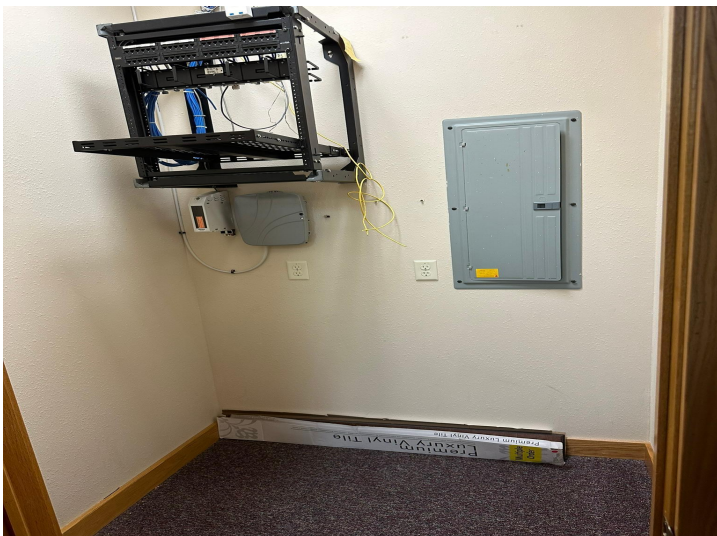
**Call Affinity Real Estate**

**218-237-3333**

**[info@affinityrealestate.com](mailto:info@affinityrealestate.com)**



**Affinity Real Estate - 600 Park Avenue South - Park Rapids MN 56470**



website: [www.AffinityRealEstate.com](http://www.AffinityRealEstate.com) | email: [info@affinityrealestate.com](mailto:info@affinityrealestate.com) | office: 218-237-3333 | fax: 218-237-3377



**\$750**  
 MLS 6756802 Commercial  
 677 Anne Street  
 Bemidji MN 56601





website: [www.AffinityRealEstate.com](http://www.AffinityRealEstate.com) | email: [info@affinityrealestate.com](mailto:info@affinityrealestate.com) | office: 218-237-3333 | fax: 218-237-3377



**\$750**  
MLS 6756802 Commercial  
677 Anne Street  
Bemidji MN 56601