



MLS 6756810 Lake Home

**\$549,000**

2,328 sq ft  
3 bedrooms  
2 baths

4926 Susanville Drive  
Brainerd MN 56401

Waterfront: Hartley

Status: Active

#### Description:

Experience serene lakefront living in this beautifully crafted 3-bedroom, 2-bathroom home on a level lot along Hartley Lake in Brainerd. Designed for comfort and connection to nature, this retreat features vaulted ceilings, expansive floor-to-ceiling windows, and a main-level living layout that frames breathtaking lake views at every turn.

Warm maple hardwood floors and rich maple cabinetry set the tone, complemented by granite countertops and an open kitchen perfect for entertaining or daily ease. A cozy gas fireplace anchors the living room, offering comfort in every season. Enjoy multiple outdoor living spaces, including a welcoming front paver patio, a peaceful screened porch, and a spacious back deck overlooking the lake—ideal for morning coffee, sunset dinners, or gathering with loved ones. Upstairs, a loft with water views offers flexible space for a home office, reading nook, or additional lounge. Two guest bedrooms and a 3/4 bath complete the upper level, perfect for hosting or multigenerational living.

Step outside to explore the gentle path to the shoreline, where lake life becomes everyday life—kayak, fish, or simply unwind by the water. With easy access to Brainerd Lakes Country amenities, trails, golf courses, shopping, and dining, this home offers the perfect mix of privacy and convenience.

Whether you're seeking a seasonal escape or a year-round sanctuary, this Hartley Lake gem invites you to immerse yourself in nature, comfort, and style.

#### Additional Details:

Year Built	2003
Lot Acres	0.88
Lot Dimensions	irregular
Garage Stalls	2
School District	181
Taxes	\$2,934
Taxes with Assessments	\$2,984
Tax Year	2025

#### Additional Features:

**Fuel:** Natural Gas **Heat:** Forced Air



Listed By:  
Coldwell Banker Realty

From Baxter, go N on State Highway 371, turn left toward Theater Rd, continue onto W Frontage Rd, turn left onto Susanville Drive NW, and follow to the property.

Affinity Real Estate Inc. participates in the Regional Multiple Listing Service of Minnesota, Inc Broker Reciprocity (sm) program, allowing us to display other broker's listings on our website. All properties are subject to prior sale, change or withdrawal.



**Call Affinity Real Estate**

**218-237-3333**

Theater Rd, continue onto W Frontage Rd, turn left onto Susanville Drive NW, and follow to the property.  
**info@affinityrealestate.com**



**Affinity Real Estate - 600 Park Avenue South - Park Rapids MN 56470**



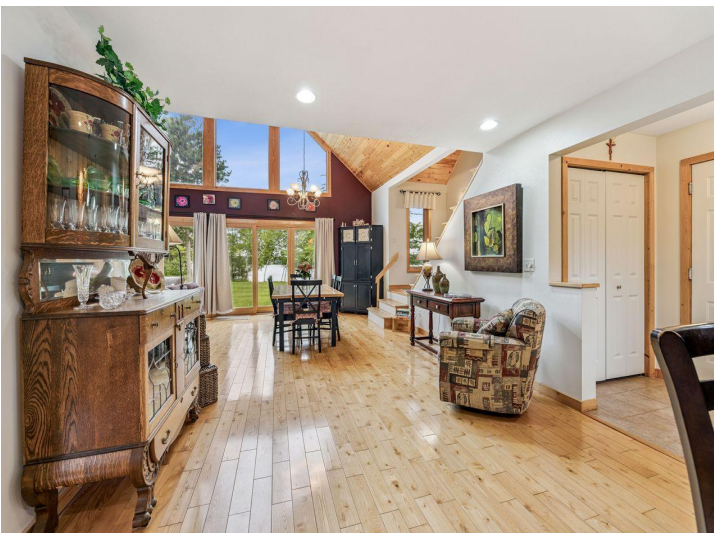


website: [www.AffinityRealEstate.com](http://www.AffinityRealEstate.com) | email: [info@affinityrealestate.com](mailto:info@affinityrealestate.com) | office: 218-237-3333 | fax: 218-237-3377

**Affinity**  
REAL ESTATE INC

**\$549,000**  
MLS 6756810 Lake Home  
4926 Susanville Drive  
Brainerd MN 56401





website: [www.AffinityRealEstate.com](http://www.AffinityRealEstate.com) | email: [info@affinityrealestate.com](mailto:info@affinityrealestate.com) | office: 218-237-3333 | fax: 218-237-3377

**Affinity**  
REAL ESTATE INC

**\$549,000**  
MLS 6756810 Lake Home  
4926 Susanville Drive  
Brainerd MN 56401



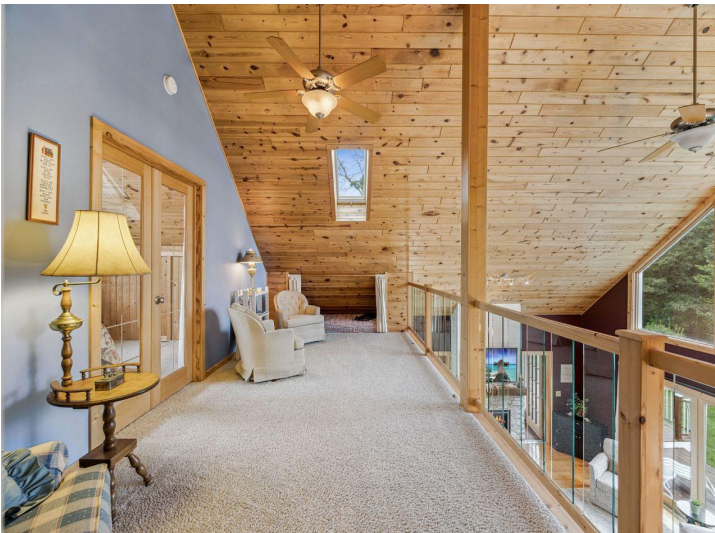


website: [www.AffinityRealEstate.com](http://www.AffinityRealEstate.com) | email: [info@affinityrealestate.com](mailto:info@affinityrealestate.com) | office: 218-237-3333 | fax: 218-237-3377

**Affinity**  
REAL ESTATE INC

**\$549,000**  
MLS 6756810 Lake Home  
4926 Susanville Drive  
Brainerd MN 56401





website: [www.AffinityRealEstate.com](http://www.AffinityRealEstate.com) | email: [info@affinityrealestate.com](mailto:info@affinityrealestate.com) | office: 218-237-3333 | fax: 218-237-3377

**Affinity**  
REAL ESTATE INC

**\$549,000**  
MLS 6756810 Lake Home  
4926 Susanville Drive  
Brainerd MN 56401





website: [www.AffinityRealEstate.com](http://www.AffinityRealEstate.com) | email: [info@affinityrealestate.com](mailto:info@affinityrealestate.com) | office: 218-237-3333 | fax: 218-237-3377



**\$549,000**  
 MLS 6756810 Lake Home  
 4926 Susanville Drive  
 Brainerd MN 56401

website: [www.AffinityRealEstate.com](http://www.AffinityRealEstate.com) | email: [info@affinityrealestate.com](mailto:info@affinityrealestate.com) | office: 218-237-3333 | fax:218-237-3377



**\$549,000**

MLS 6756810 Lake Home  
4926 Susanville Drive  
Brainerd MN 56401